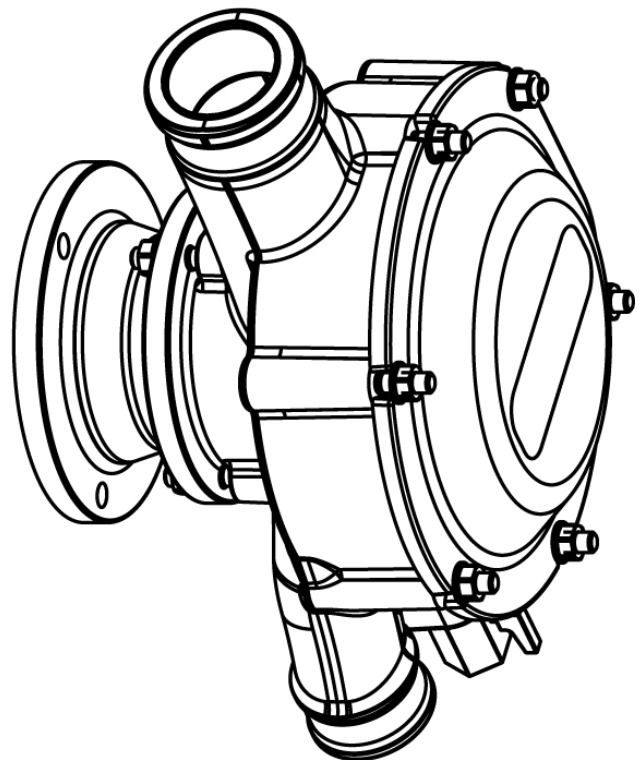


Truck mixer pumps Series FMP

- Overview of products
- Executions
- Materials
- Types of seals
- Sectional and dimensional drawings

STROBL



We are your partner in transporting any liquid from one place to another. We offer a wide range of pumps for different applications as well as complete systems, optimized to your needs. With this strategy we are able to deliver pumps, valves and every other needed part to our customers. This strategy also helps our customers to realize their projects cost and energy efficient. If we find any potential for optimizing your systems, we will help developing a specialized product fitting your needs.

Since our founding in 2006 we have permanently extended and optimized our production program to be in position to offer to our partners the possibilities to achieve their needs. Despite our short history, we are able to profit from more than 50 years of experience in building pumps and systems. This is possible through our experienced personnel, which takes the main part in our philosophy. Only with our motivated personnel we are able to take care of new developments and help our customers realizing their projects.

To meet our own and the quality requirements of our customers, we have implemented documentation standards for all production and development steps at a very early stage. This culminated in the fact that we have been certified since 2012 according to ISO 9001:2008 and since 2016 according to ISO 9001:2015. Thus our customers can rely on a consistent quality.

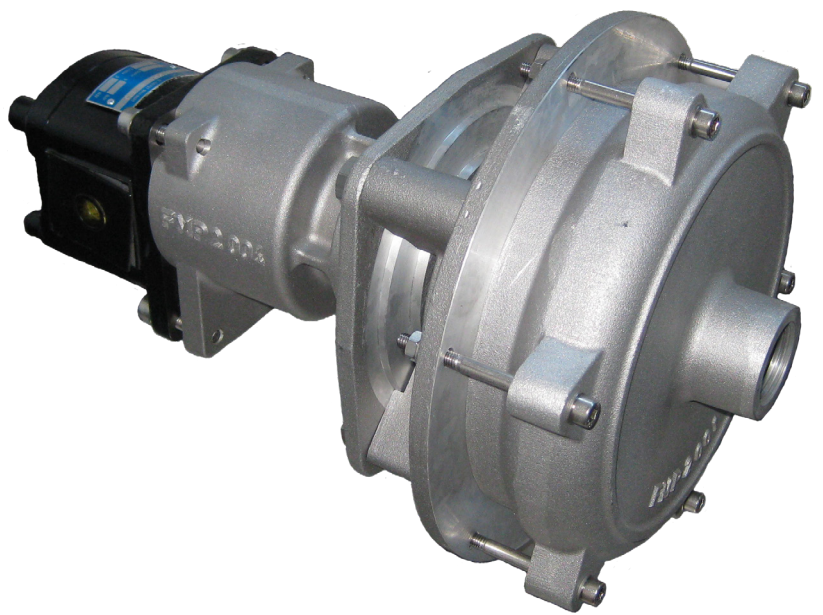


Our pumps are manufactured exclusively at our headquarters in Hilpoltstein. Hilpoltstein is located approximately 35 km south of Nuremberg. Our high speed of developing of our product series led to a higher demand for production capacity. We have therefore moved into our new building in 2010, which has been extended by a new fabrication hall in 2016. This now provides the opportunity to test all pumps on a modern test bed and to carry out witnessed tests together with our customers. Due to our constant and strong growth, we reached the edges of our office capacities this year. Therefore we started building up new office space in autumn 2018.



Table of contents

General Description	1
Fields of Application	1
Operating Data	1
Connections	1
Motors	1
Type Code	2
Materials / Material Description	3
Type of Seals	3
Characteristic Curves FMP3 / FMP2	4
Dimensional Drawings	5 - 6



General description

Centrifugal pumps series FMP are single stage, normal priming, centrifugal pumps for installation on or in vehicles or construction machines.

Fields of application

Main field of application for our truck mixer pumps series FMP is the addition of water into the drum of truck mixers and the cleaning of these vehicles after emptying the drum. Depending on the execution, our pumps are either suitable for direct installation on the drum drive or implementation into the hydraulic system. Our customers use the truck mixer pumps mainly for following applications:

- Installation on truck mixers
- Mobile pump stations with hydraulic systems
- Conveying of liquids on vehicles

Operating data

Flow:	Q up to 30 m ³ /h
Total head:	H up to 50 m
Motor power:	differs, depending on the drive

Connections

Our truck mixer pumps have suction and discharge connections with inner threads. The size of threads can be found in the dimensional drawing. Additionally the FMP3 is prepared for direct connection of hoses.

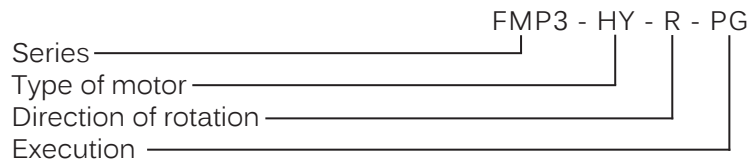
Adapters for other dimensions of threads or flanges are available on request.

Motors

Depending on the mounting situation, we can offer hydraulic motors, single or triple phase motors or the auxiliary connection of a gear box.

Degree of protection:	IP 55
Direction of rotation:	Clock-wise or Counter-clock-wise, depending on the pump type

Type code



Series:

- FMP3 - Pump with one discharge and two suction connections
- FMP2 - Pump with one suction and one discharge connection

Type of motor:

- HY - Bowex-coupling for direct installation on drum gear
- GL - Hydraulic motor
- D - DC motor
- D - Triple phase motor
- W - AC motor

Direction of rotation:

- R - Clock-wise
- L - Counter-clock-wise

Execution:

- PG - Standard version with threaded connections

Materials

Part	Material code			
	Standard - Y101	Y201	Y203	Y501
Casing	Cast iron - GG 25	Aluminium	Aluminium	Stainless steel - 316
Impeller	Cast iron - GG 20	Cast iron - GG 20	Cast iron - GG 20	Stainless steel - 316
Shaft	Chromium steel - 1.4021			Duplex - 1.4462
Bearing bracket	Cast iron	Aluminium	Cast iron	Aluminium

Material	German description	German material code number	EU - description	EU - material code number	ASTM - UNS - description
Cast iron	GG 20	0.6020	EN-GJL-200	JL 1030	A48 - Grade 30
	GG 25	0.6025	EN-GJL-250	JL 1040	A48 - Grade 35
Aluminium	G-ALSi10Mg	3.2381	AB-ALSi10Mg	AB-43000	A 13600
Chromium steel	X20Cr13	1.4021	X20Cr13	1.4021	A276 - S4200
Stainless steel - 316	G-X5CrNiMo 19-11-2	1.4408	GX5CrNiMo 19-11-2	1.4408	A351 - CF8M - J92900
Duplex	X2 CrNiMoN 22-5-3	1.4462	X2 CrNiMoN 22-5-3	1.4462	A276 -S31803

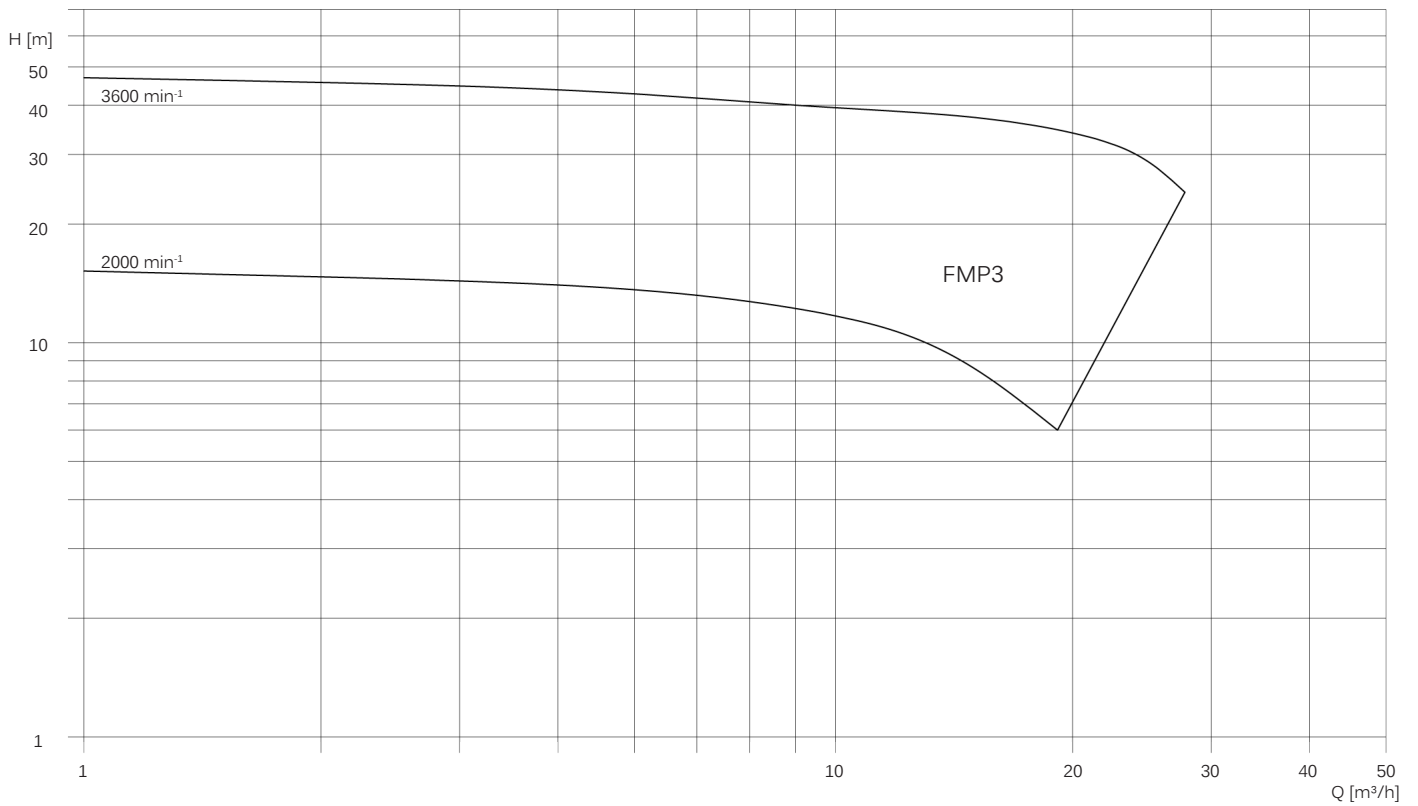
Other materials are available on request.

Types of seals

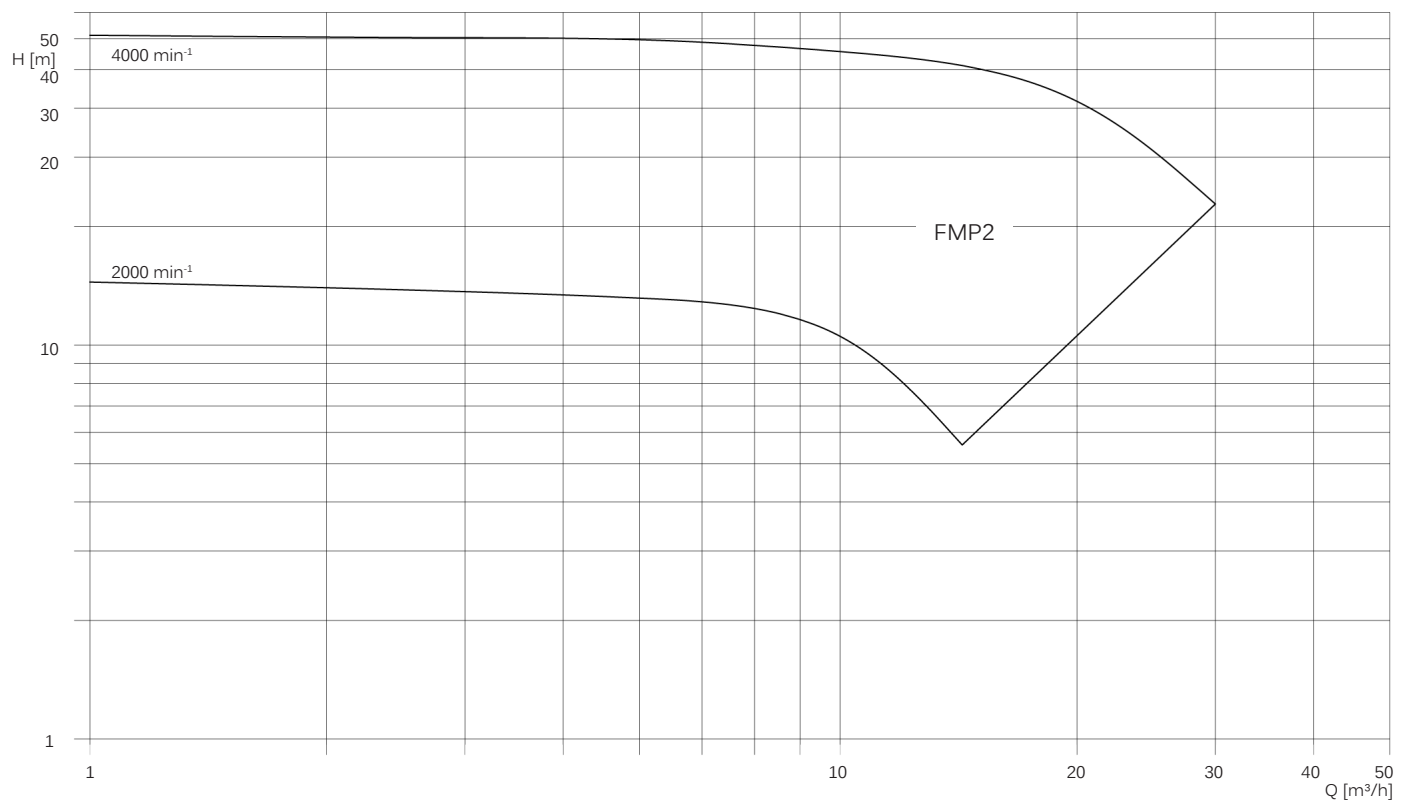
Part	Seal code				
	Z101	Z102	Z103	Z104	Z105
Rotating ring	Carbon - A	Carbon - A	Carbon - A	SiC - Q	SiC - Q
Stationary seat	SiC - Q	SiC - Q	SiC - Q	SiC - Q	SiC - Q
Elastomer	NBR -P	FKM -V	EPDM - E	FKM - V	EPDM - E
Spring	1.4571 - G	1.4571 - G	1.4571 - G	1.4571 - G	1.4571 - G
Metal parts	1.4571 - G	1.4571 - G	1.4571 - G	1.4571 - G	1.4571 - G
Remark	Rubber bellow seal for pressure up to 12 bar.	Rubber bellow seal for pressure up to 12 bar.	Rubber bellow seal for pressure up to 12 bar.	Rubber bellow seal for pressure up to 12 bar.	Rubber bellow seal for pressure up to 12 bar.

Other types of seals are available on request.

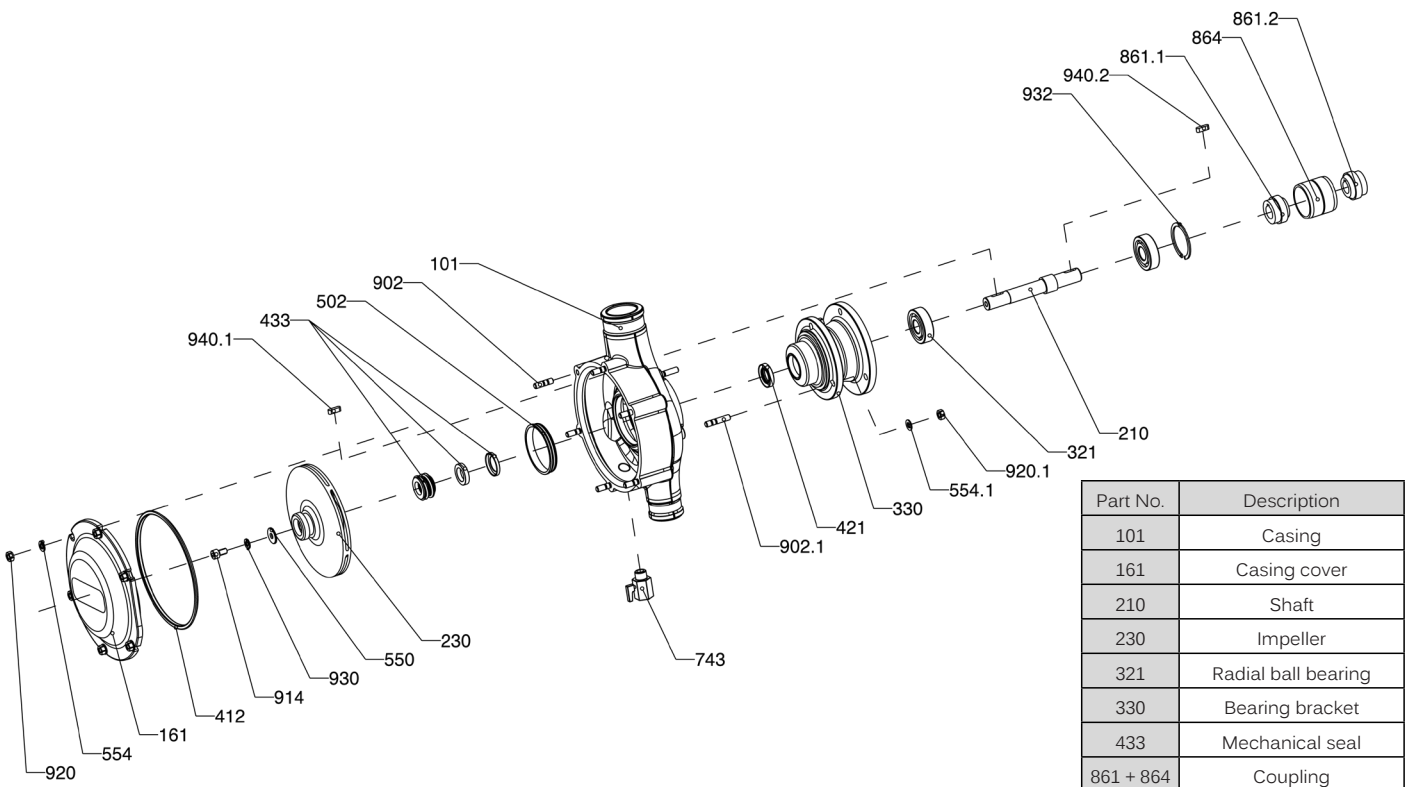
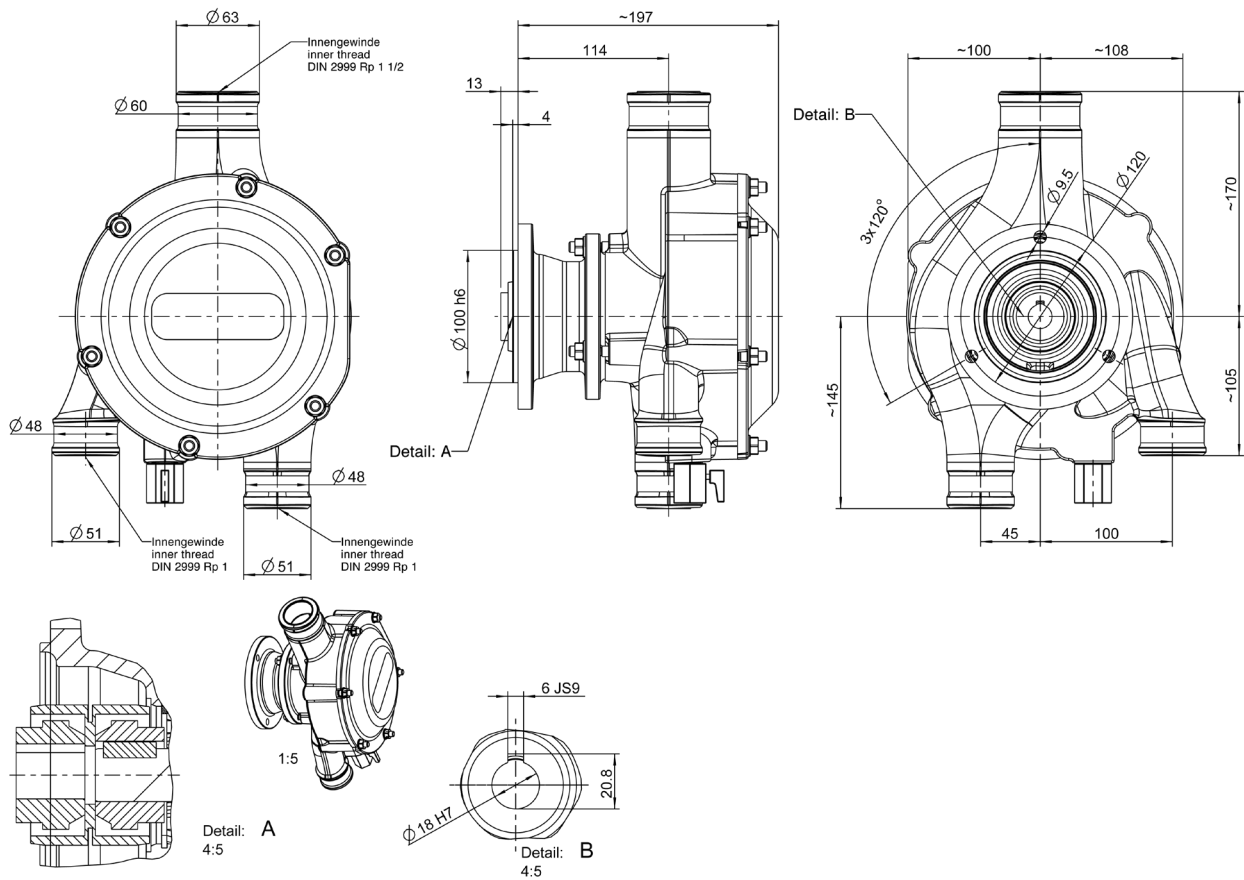
Characteristic curve FMP3



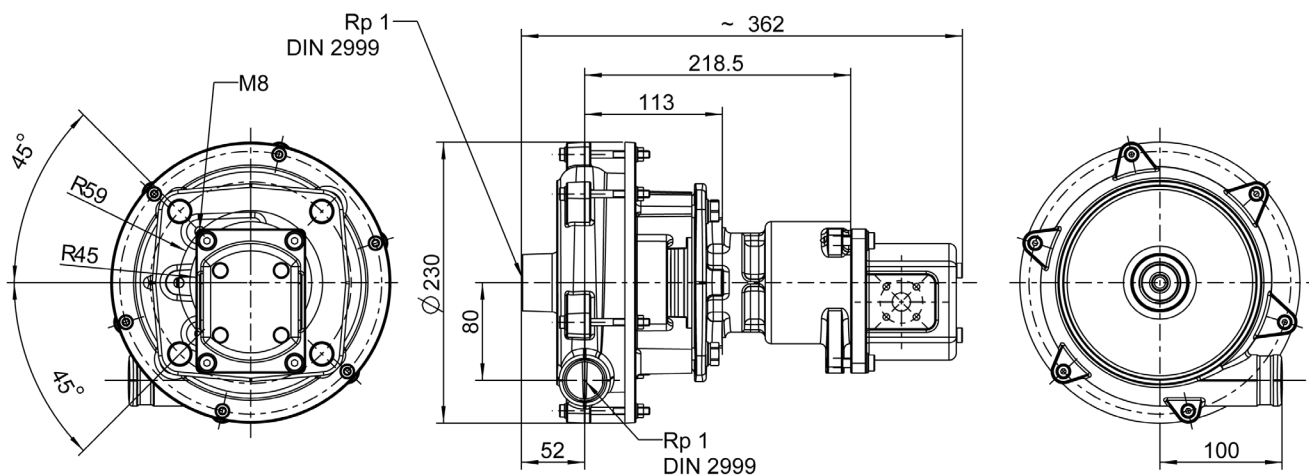
Characteristic curve FMP2



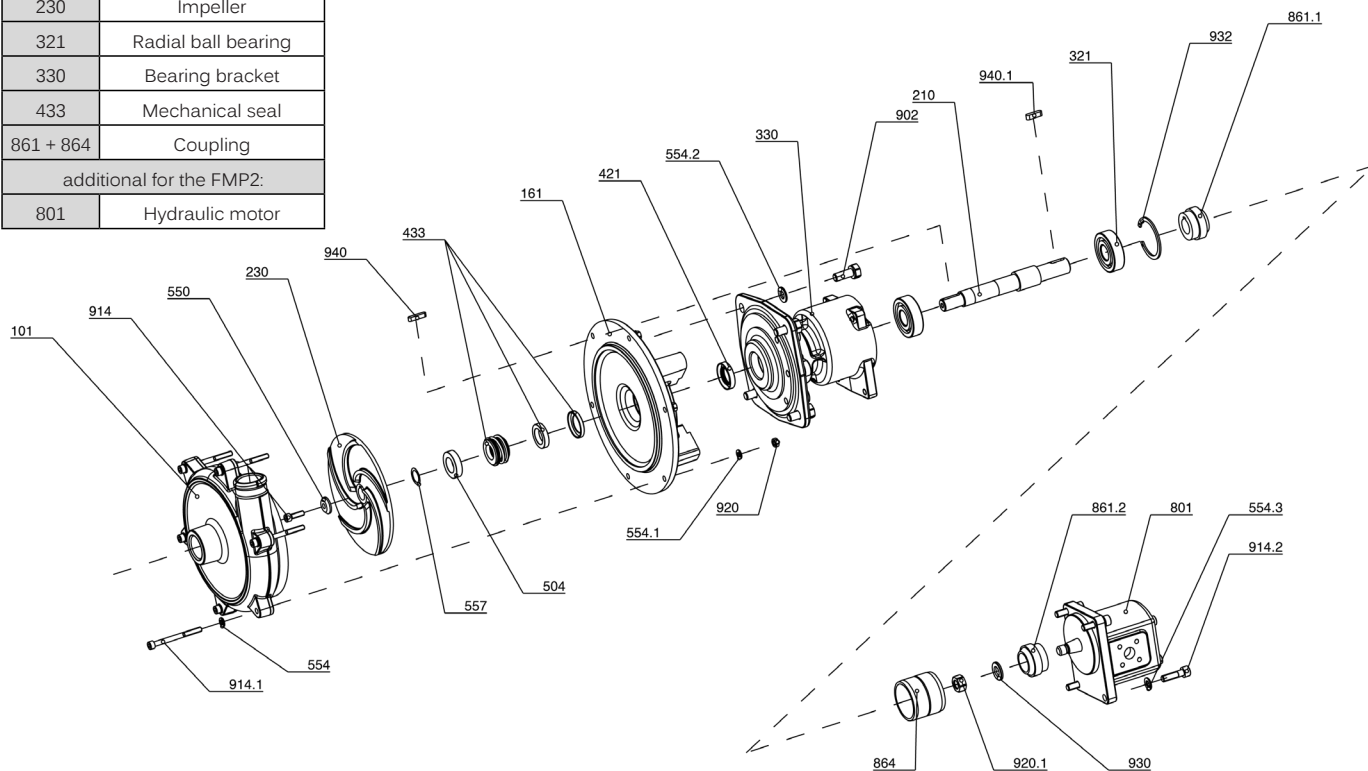
Dimensional and sectional drawing FMP3-PG



Dimensional and sectional drawing FMP2-HY



Part No.	Description
101	Casing
161	Casing cover
210	Shaft
230	Impeller
321	Radial ball bearing
330	Bearing bracket
433	Mechanical seal
861 + 864	Coupling
additional for the FMP2:	
801	Hydraulic motor



Truck mixer pumps
Series FMP

STROBL
PUMPEN

