

Sewage water pumps Series AWP/AWPH

- Product overview
- Executions
- Materials
- Type of seals
- Dimensional drawings and exploded views



STROBL

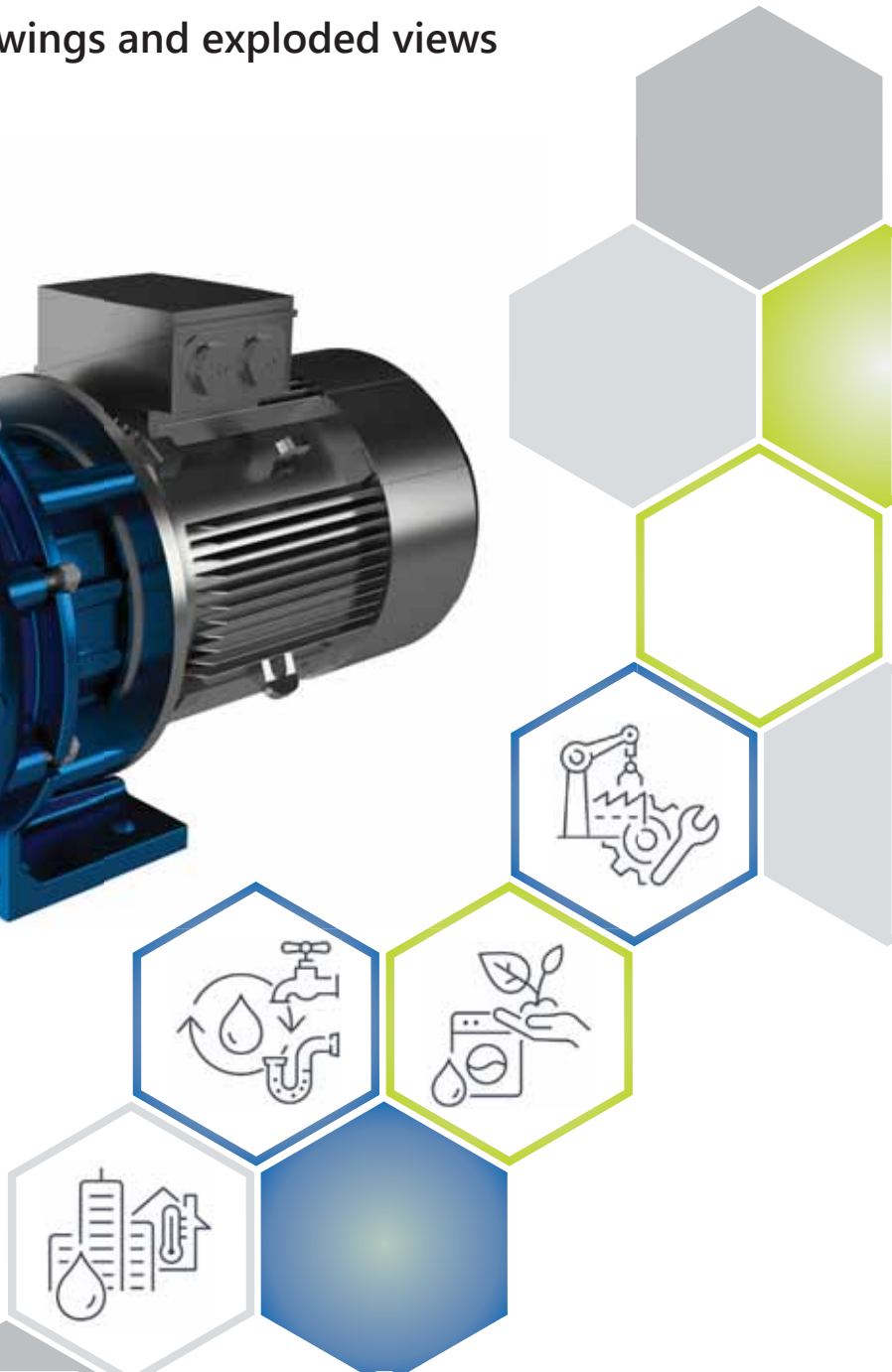


Table of contents

General description	5
Fields of applications	5
Operating data	5
Connections	6
Type code	6
Materials	8
Type of seals	10
Drives	11
Characteristic curves	12
Informationen on dimensional drawings and exploded views	15
Dimensional drawings	16
Examples for special versions	52
Exploded views	54



Strobl Pumpen – Your Partner for High-Quality Centrifugal Pumps „Made in Germany“

Since 2006, **Strobl Pumpen** has been representing the highest quality, innovation, and precision in fluid handling. Whether for municipal applications, mechanical engineering, shipbuilding, or the demanding chemical and oil industries – we offer **customized pump solutions** perfectly fitting to your requirements

Our goal is simple: **to find the best solution for your pumping challenge.** That’s why we not only supply individual pumps, but also complete systems and packages – all from one single source.

Quality you can rely on:

Our products are designed and manufactured exclusively in Germany and proudly bear the “Made in Germany” seal of quality. From the initial design to final testing, precision is our top priority. Our ISO 9001 certification guarantees consistently high standards – day after day, year after year.



Innovation meets responsibility:

We think ahead – also with the future in mind. Sustainability is not just a buzzword for us, but a lived reality. Energy-efficient machinery, rainwater harvesting, an electric vehicle fleet, and energy-optimized buildings are all part of our corporate philosophy. Since 2019, we have been a proud member of a Bavarian environmental alliance called “**Umweltpakt Bayern**” and voluntarily commit to additional environmental measures.



A family business with heart and mind:

As family owned and managed company based in **Hilpoltstein, Bavaria, near Nuremberg**, we combine traditional values with modern engineering. Our highly motivated team is the heart of our success – dedicated, solution-oriented, and always focused on what matters most:

Your satisfaction.



With continuous development, technical excellence, and a spirit of partnership, we are shaping the future of fluid handling.

Strobl Pumpen – We move fluids. Precisely. Reliably. Sustainably.



General description

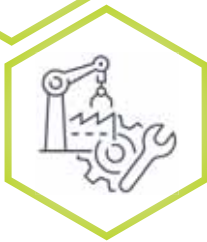
Sewage water pumps series AWP/AWPH are single stage, normal priming, centrifugal pumps with a large free passage. Depending on type, these pumps can be set up dry, partly flooded or submerged. Pump version AWPH is used for high system pressures. Depending on Material selection, the casing design pressure is up to 40 bar.

Fields of applications

Main field of application of sewage water pumps is the conveying of sewage waters in industry as well as in communal/ domestic use. Due to the different materials used, conveying of various acid liquids/ lyes in the chemical industry is possible. As there are large free passages in the different impeller geometrics, polluted sewage waters with a high quantity of solids can be conveyed, as well as sewage waters with a high quantity of long fibrous components, e. g. in swimming pools. Our customers use the sewage water pumps currently in the following applications:



- ⊙ communal / domestic sewage water handling
- ⊙ communal, as well as private swimming pools
- ⊙ vacuum drainages (toilet stations, refrigerated display cases, ...)
- ⊙ compact sewage water systems (fixed or for shipbuilding)



- ⊙ Industry and plant construction
- ⊙ recycling of water in the building industry
- ⊙ draining of pits/ sumps

Operating data

Flow:	Q up to 900 m ³ /h
Head:	H up to 60 m
Motor power:	P from 0,37 kW to 90 kW
Degrees of protection:	IP 55 or IP 68
Casing design pressure:	Series AWP: 6 bar at 20 °C Series AWPH: 25 bar at 20 °C with cast iron 40 bar at 20 °C, material with higher strength

STROBL PUMPEN

Connections

General

Flanges are designed as RF flanges in accordance with EN 1092-2/PN16 as standard. For variants with higher pressure ratings, the pump casings are equipped with flanges in accordance with EN 1092-2/PN25, PN100, PN250 or special high-pressure flanges, depending on the application. As an alternative, all flanges can be drilled according to the relevant ANSI B16.5 variants (150RF or 300RF).

Adapters for special customer-specific flanges, other standards or threaded connections are available on request.

The sewage water pump AWP 25-125 has a standard flange at suction side with internal threads for metric screws. On all other types of AWP series the suction flange is equipped with stud bolts with metric threads.

Intermediate pieces with cleaning openings are available for all pumps.

AWPT-D 50-125 has a pressure connection as 2" inner thread.

Type code

Series

AWP -K2 50-160-XX

AWP/AWPH	- Horizontal sewage water pump (Standard version)
AWPN/AWPHN	- Horizontal sewage water pump (Stub shaft version)
AWPT/AWPHT	- Submersible motor and pump
AWPL1X/AWPHL1X	- Horizontal sewage water pump with grease lubricated bearing
AWPL2X/AWPHL2X	- Horizontal sewage water pump with oil lubricated bearing
AWPVZ/AWPHVZ	- Vertical sump pump with column pipe and sole plate
AWPVS/AWPHVS	- Vertical sump pump with medium lubricated guiding bearings

Pumps in the AWPN/AWPHN series are block pumps that are designed with a standard motor, a stub shaft, and reinforced bearings. This allows the assembly of motors to special standards (IE4, NEMA, ATEX, etc.).

If the motor shall completely be separated from the pump, we suggest series AWPL/ AWPHL with bearing bracket. The pump unit can additionally be mounted on a base frame and thus almost every kind of drive is possible.

Submersible motor pumps series AWPT/ AWPHT are equipped with a motor in protection IP 68 and can be used submerged in pits or sumps.

Pumps series AWPVZ/ AWPHVZ are sump pumps with dry column pipes and a grease lubricated bearing system. These pumps are used in pits or sumps, where submersible motor pumps cannot be used due to temperature or medium conditions.

Series AWPVS/ AWPHVS are pumps in construction form VS4 to API 610. These are sump pumps with medium greased guiding bearings in the intermediate pipe. These pumps suit especially installations on procedural applications.



Impeller execution

AWP -**K2** 50-160-XX

- K2 - 2-blade channel type impeller
- K2B, K2D - 2-blade channel type impeller with special geometry
- K3 - 3-blade channel type impeller
- K3B - 3-blade channel type impeller with special geometry
- K6 - 6-blade channel type impeller
- F, FB - Vortex impeller for mediums with high particle load or gas content
- D - One channel screw impeller for mediums with high sludge or particle content
- C - Pump with semi-open channel type impeller and fibre cutting device
- S - Pump with macerator for shreddable particles in front
(not suitable for stones, nails or other hard parts)
- P - Pump with additional cleaning piece for simplified clean out

Nominal size of nozzels

AWP -K2 **50**-160-XX

See dimensional drawing or characteristic curve

Free passages through the Impellers								
Pump/ Impeller	25-125	50-125	50-160	50-200	80-200	80-315	100-200	150-315
K2	25	40	50		80			130
K2B			45				100	
K2D			35					
K3			40	50	55	80		130
K3B					50			
K6								70
F / FB	25		50	50	80	80	100	145
D		50						
C	22		45	45	75	75	75-95	

Dimension in mm

Particle size after the macerator is approx. 6mm for pump AWP-S 25-125 and approx. 8mm for pump AWP-S 50-160

Nominal diameter of impeller

AWP -K2 50-**160**-XX

See dimensional drawing or characteristic curve

Execution code

AWP -K2 50-160-**XX**

- Standard version
- HY - Drive by hydrauliy motor
- XX - Special versions e.G. bleeding line, etc.

STROBL PUMPEN

Materials

Please note the information below for the following material tables

General

- ⦿ Standard variants of materials in table 1
- ⦿ Further material options in table 2

Part	Material codes								
	Y101	Y110	Y104	Y106	Y118	Y301	Y302	Y405	Y501
Casing part	Cast iron GG 25				Nodular cast iron GGG40	Bronze G-CuSn10	Aluminium bronze G-CuAl10Ni	Hard iron	Stainless steel 1.4408
Impeller	Cast iron GG 25	Brass G-CuSn10	Stainless steel 1.4408	Nodular cast iron GGG40	Bronze G-CuSn10	Aluminium bronze G-CuAl10Ni	Hard iron	Stainless steel 1.4408	
Wear plate (C-Variants)	Hardend steel					Duplex steel 1.4462	Duplex steel 1.4462	na	Duplex steel 1.4462
Shaft	Chromium steel 1.4021	Duplex steel 1.4462							
Bearing housing and lantern	Cast iron GG 20/25								
Additionally for S-Version									
Suction piece + cover	na	Cast iron GG 20/25			Nodular cast iron GGG40	Bronze G-CuSn10	Aluminium bronze G-CuAl10Ni	na	Stainless steel 1.4408
Cutting impeller	na	Duplex steel 1.4470						na	Duplex steel 1.4462
Cutting plate	na	Duplex steel 1.4462						na	Duplex steel 1.4462

Sewage water pumps
Series AWP/AWPH



Material	DIN EN 10027-1	Code	ASTM-UNS-Code
Cast Iron	GG 25	0.6025	A48 Grade 35
Nodular Cast Iron	GGG 40	0.7040	A536-60-40-18
Bronze	G-CuSn10	2.1050.01	B505-C90700
Aluminium Bronze	G-CuAl10Ni	2.0975.01	B505-C90500
	CuAl11Ni6Fe6	2.0978	B150-C63020
Hard Iron	G-X300CrMo15-3	0.9635	A532-Class II Typ B
Cast Steel / Steel	GS-C25	1.0619	A216-WCB-J03002
	S235Jr (St 37)	1.0037	A29-1013-G10150
	C 22	1.0402	A29-1020-G10200
	G20Mn5	1.6220	A352-LCC-J03003
Chromium Steel	G-X4CrNi13-4	1.4317	A487-CA6NM-J91540
	X20Cr13	1.4021	A276-S42000
Stainless Steel	G-X5CrNiMo19-11-2	1.4408	A351-CF8M-J92900
	X6CrNiMoTi17-12-2	1.4571	A276-316Ti-S31635
	G-X1CrNiSi18-15-4	1.4361	Alloy 1815 - S30600
	X1CrNiSi18-15-4	1.4361	Alloy 1815 - S30600
Duplex Steel	G-X2CrNiMoN22-5-3	1.4470	A995-4A-J92905
	X2CrNoMoN22-5-3	1.4462	A276-S31803
Super Duplex Steel	X2CrNiMoN26-7-4	1.4469	A995-5A-J93404
	X2CrNiMoCuWN25-7-4	1.4501	A276-S32760
Duplex Hard Iron	G-X40CrNiMo27-5	1.4464	
High Alloy Stainless Steel	G-X2CrNiMoCuN20-18-6	1.4557	A744-6Mo-J93254
	X1CrNiMoCuN20-18-7	1.4547	A276-6Mo-S31254
	G-X2NiCrMoCuN25-20-6	1.4588	A744-CN3MN - J94651
	X1NiCrMoCuN25-20-7	1.4529	Alloy 926 - N08926
	G-X2NiCrMoCu25-20-5	1.4584	(Alloy 904L - N08904)
	X1NiCrMoCu25-20-5	1.4539	Alloy 904L - N08904
	X1NiCrMoCu31-27-4	1.4563	Alloy28 - N08028
	G-X1CrNiMoCuN33-32-1	1.4591s	Alloy 33
	X1CrNiMoCuN33-32-1	1.4591	Alloy 33 - R20033
Nickel	G-Ni95	2.4171	Ni 95
	Ni200 / Ni201	2.4066/2.4068	Ni200 / Ni201 - N02200/02201
Alloy 825	G-NiCr21Mo	2.4858	Alloy 825 -
	NiCr21Mo	2.4858	Alloy 825 -
Hastelloy B	G-NiMo30	2.4810	Hastelloy B - N10001
	NiMo28 / NiMo29Cr	2.4617/2.4600	Hastelloy B2/B3 - N10675
Hastelloy C	G-NiMo16Cr16Ti	2.4610	Hastelloy C4 - N06455
	NiCr16Mo15W	2.4819	Hastelloy C 276 - N10276
Inconel 718	NiCr19NbMo	2.4668	Alloy 718 - N07718
Titanium Grade 2	Ti 2	3.7035	Grade 2 - R50400
Titanium Grade 5	Ti 6Al-4V	3.7164/65	Grade 5 - R56400
Titanium 6-2-4-6	Ti 6-2-4-6		
Titanium Grade 7	Ti-0,15Pd	3.7235	Grade 7 - R52400
Titanium Grade 16	Ti-0,05Pd		Grade 16 - R52402
Zirconium Z702	Zirconium		ZR 702 - R60702

Type of seals

Directly integrated balanced or unbalanced seals (Z1XX or Z2XX)

- ⊙ Standard version: Direction-of-rotation-independent rubber bellow seal with carbon/SiC material combination and elastomers in NBR, FKM, EPDM, HNBR, etc.
- ⊙ Special versions with covered springs, metal bellow or highly chemical-resistant elastomers such as FFKM

Cartridge seals installed on the casing cover

- ⊙ Connections to cartridge seals always NPT thread $\frac{1}{4}$ " , $\frac{3}{8}$ " $\frac{1}{2}$ " according to seal size/shaft diameter
- ⊙ Cartridge seals standardized to match pump material, higher-quality materials for parts in contact with media possible at any time
- ⊙ Single-acting seals as above, but with flush connections and throttle chambers (quench chambers) for leakage drainage or liquid supply (e.g. API Plan 02, 11/61) (Z1XX or Z2XX)
- ⊙ Double-acting seals in back-to-back arrangement and integrated pumping thread (API Plan 53b) (Z3XX)
 - Material pairings as desired and depending on the medium
Carbon/SiC or SiC/SiC on the product side and carbon/SiC on the atmospheric side
 - O-rings in contact with the medium available in various materials (NBR, FKM, EPDM, FFKM), etc.
- ⊙ Any cartridge seal (specific manufacturers, design variants, etc.) is possible on request
- ⊙ Mounted sealing systems on base frame are possible

Other versions available on request (e.g. packing)

Sewage water pumps
Series AWP/AWPH



Drives

Standard three-phase asynchronous motors with efficiency classes in accordance with EN 60034-30 are used as drives in complete systems or the AWP/AWPH variants.

Optionally, motors in higher efficiency classes, according to NEMA (electrical or mechanical), hazardous location versions (ATEX), and special designs with specific approvals or classifications are available.

Depending on the motor and application, supplementary control panels or frequency converters can be supplied with the drive and mounted directly on the motor or attached to the base frame.

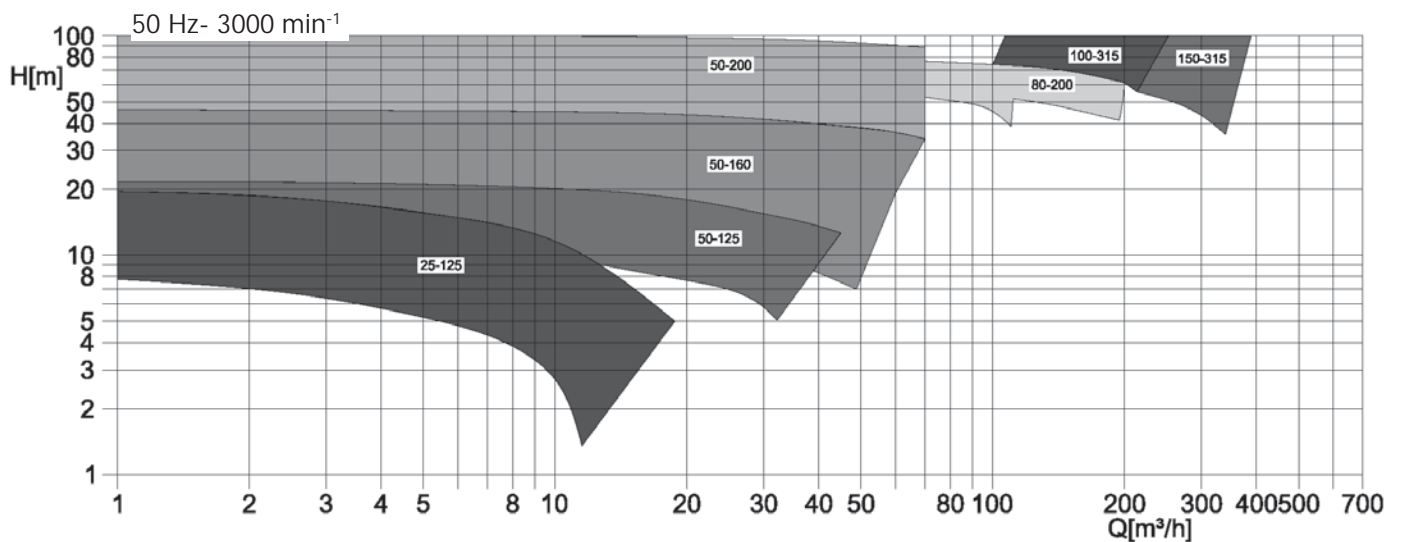
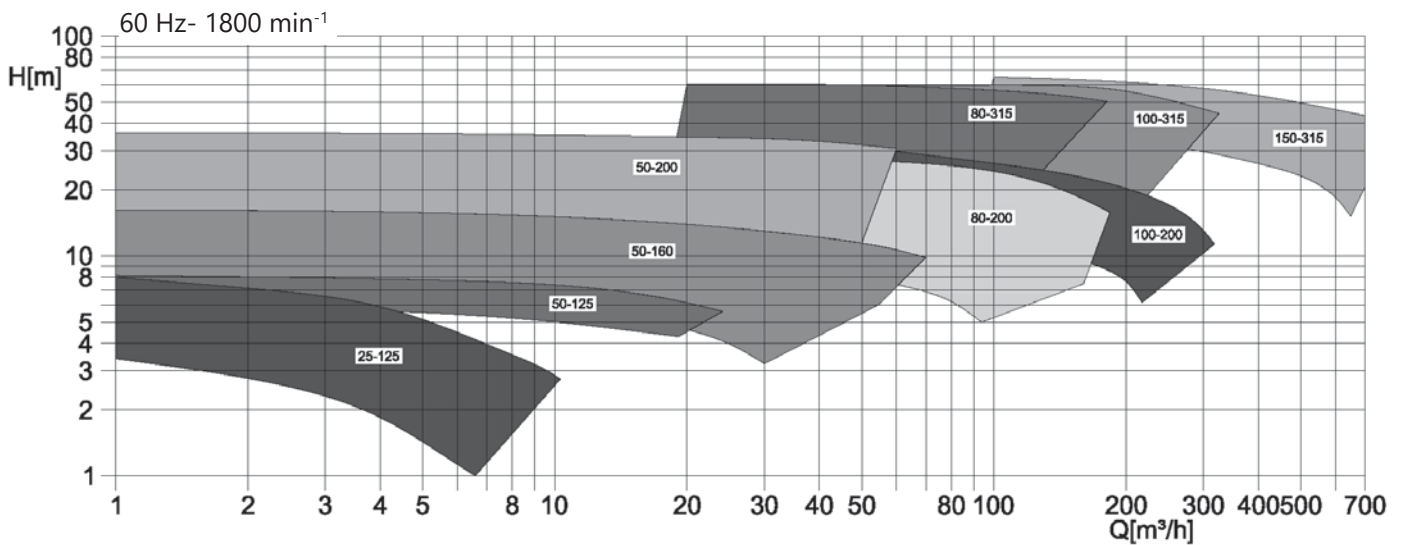
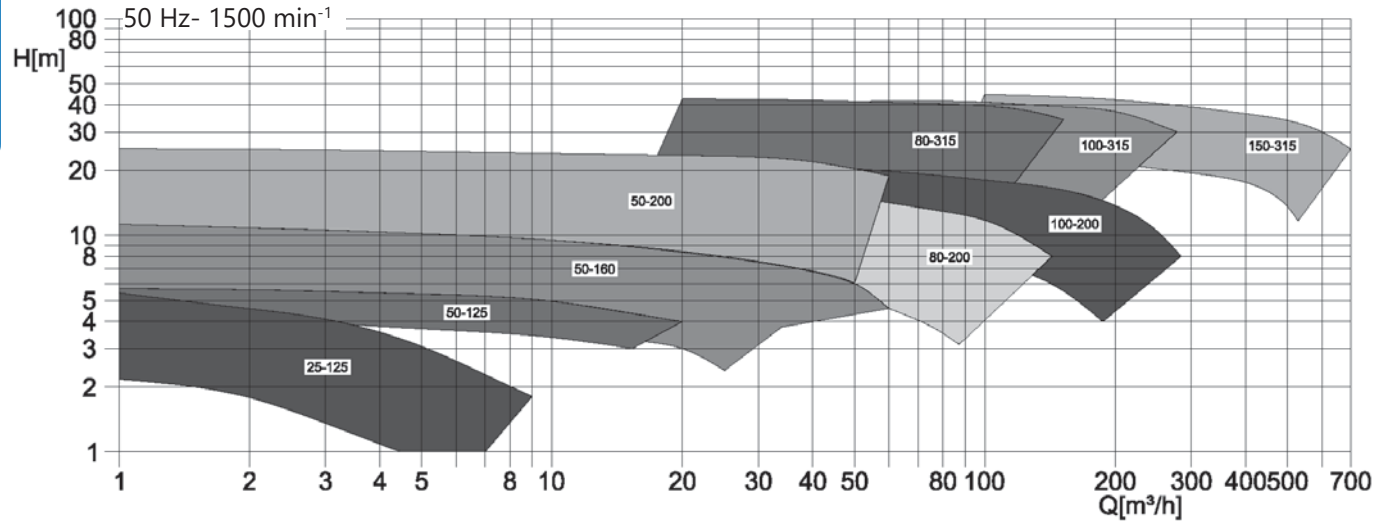
Submersible motors are available in explosion proof version Ex d (ATEX) as an option.

STROBL PUMPEN

Characteristic curves

K2, K2B, K2D, K3, K3B, K6 and C-Impeller

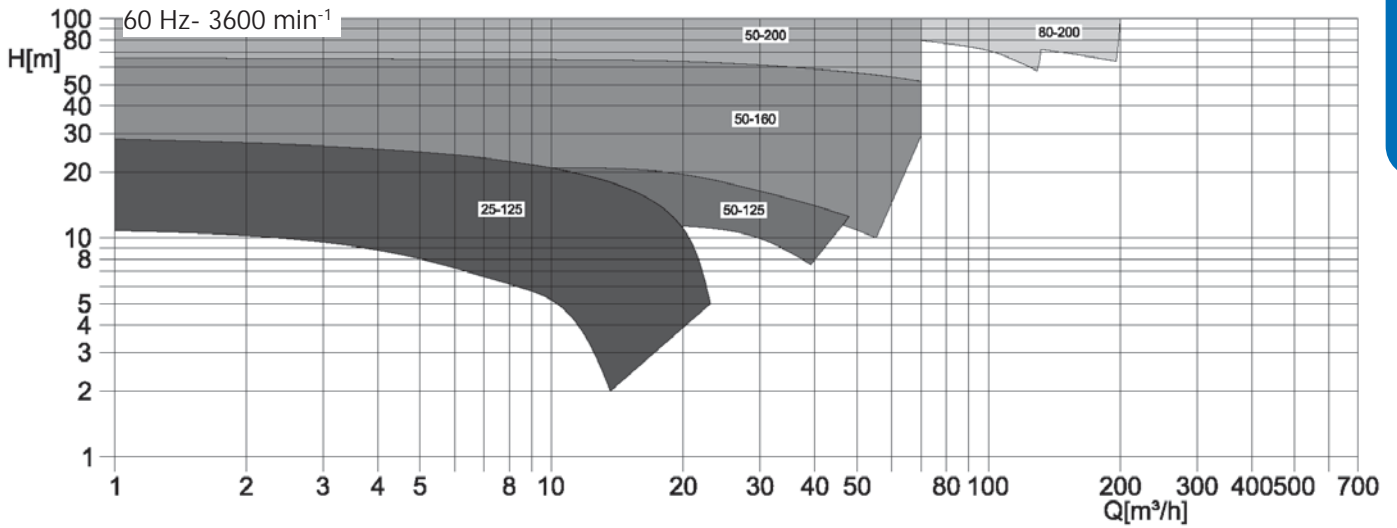
General



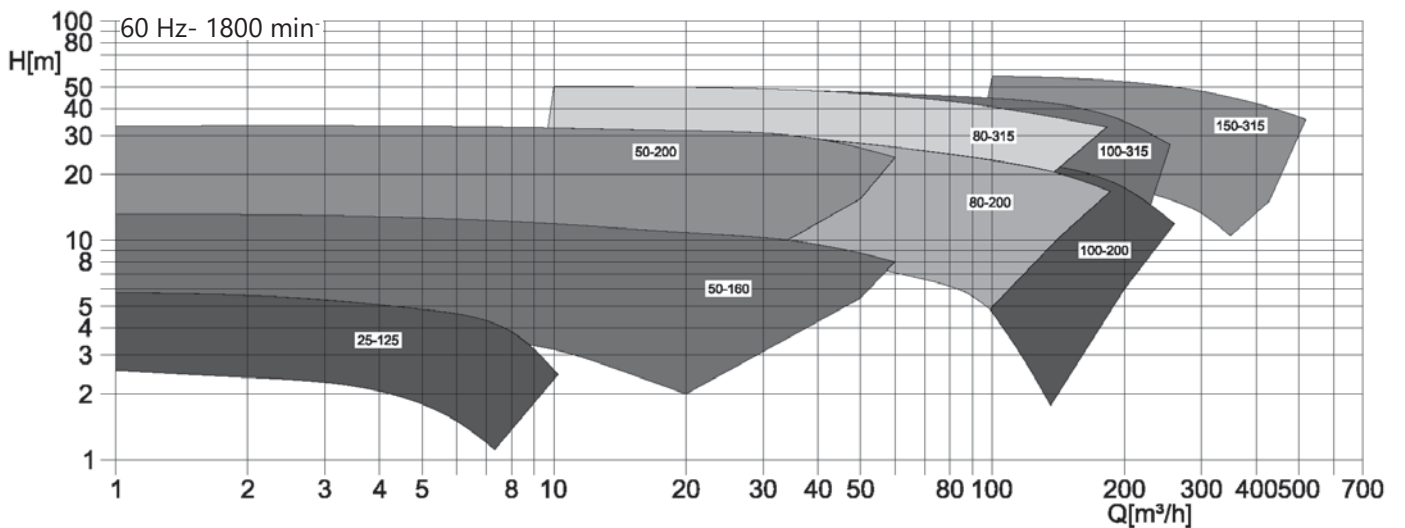
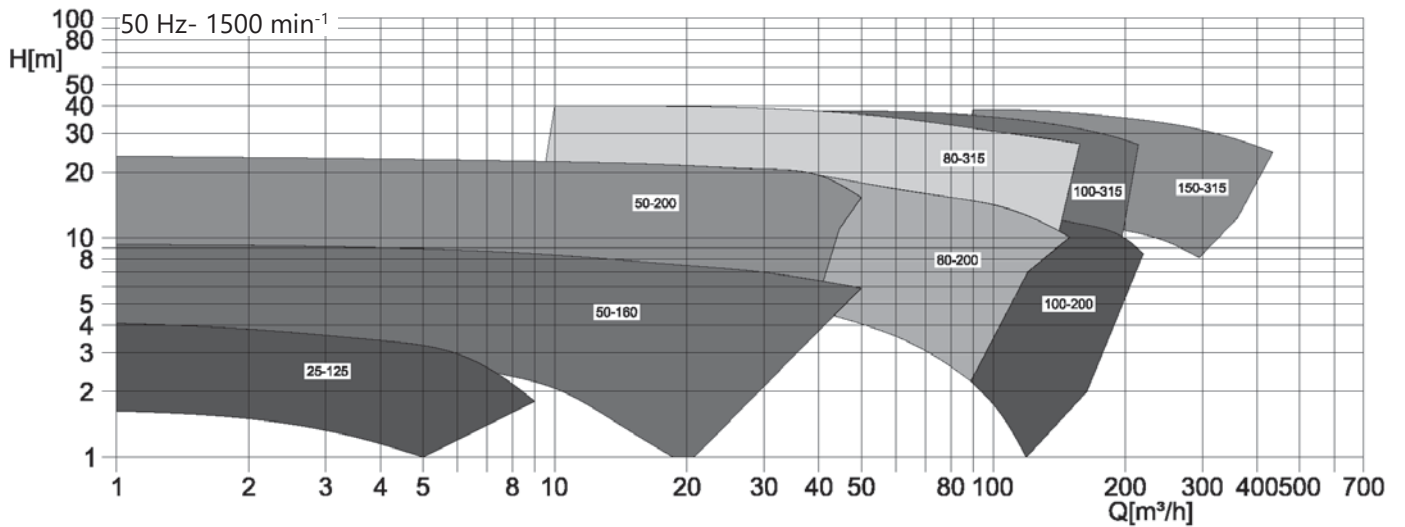


General

K2, K2B, K2D, K3, K3B, K6 and C-Impeller



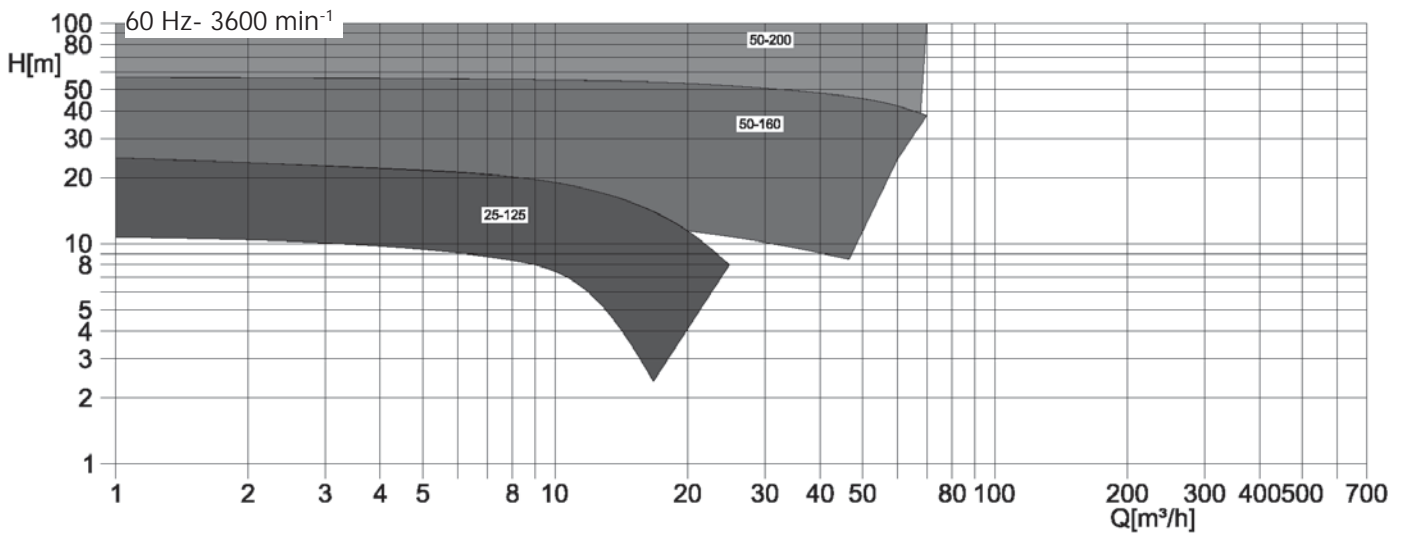
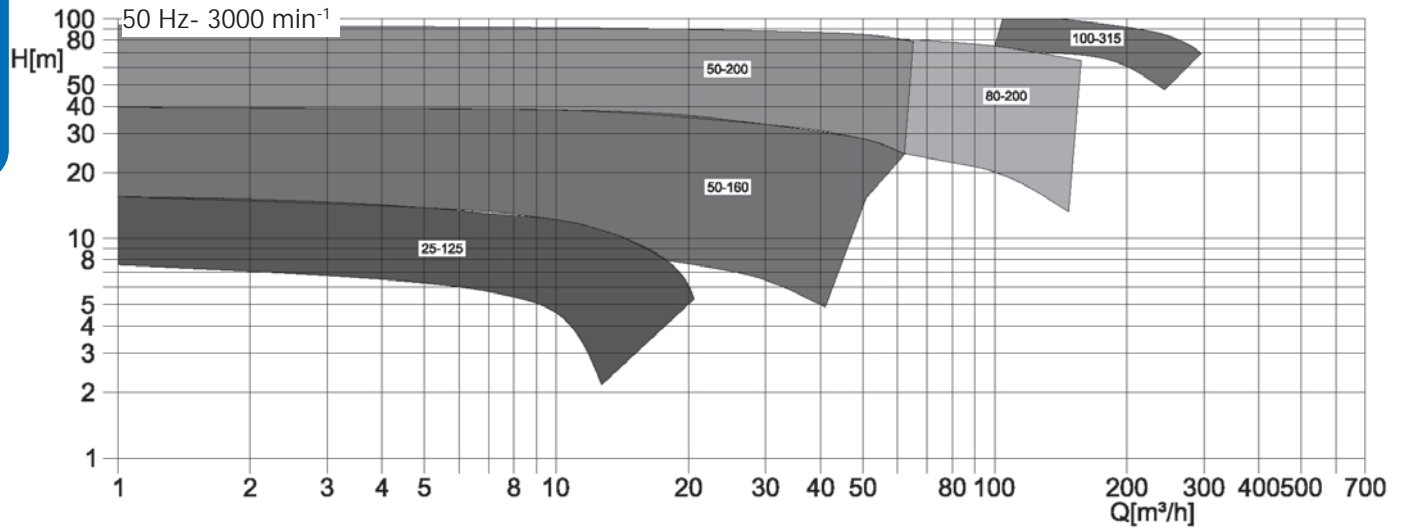
D- and F-Impeller



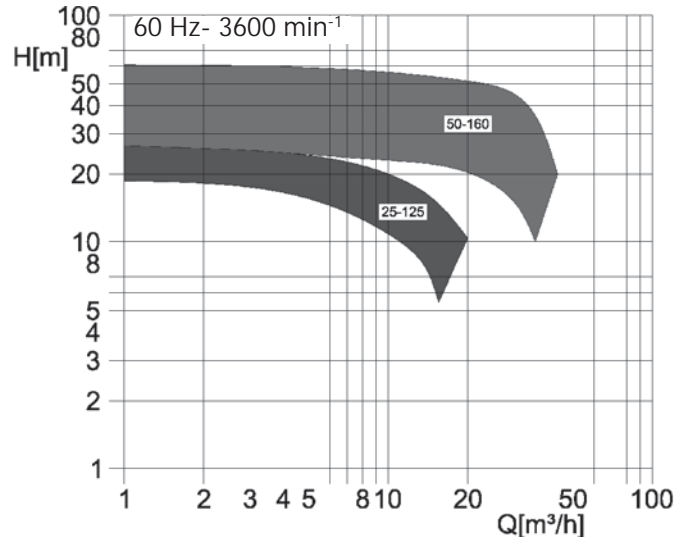
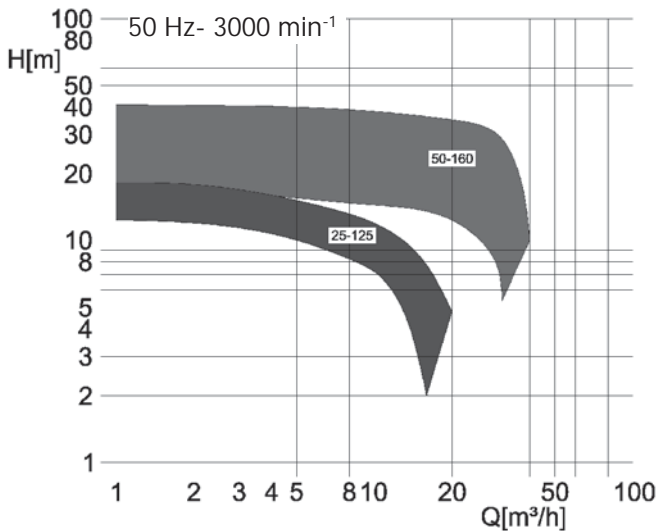
STROBL PUMPEN

General

D- and F-Impeller



S-Impeller





Informationen on dimensional drawings and exploded views

Please note the information below regarding the following pages:

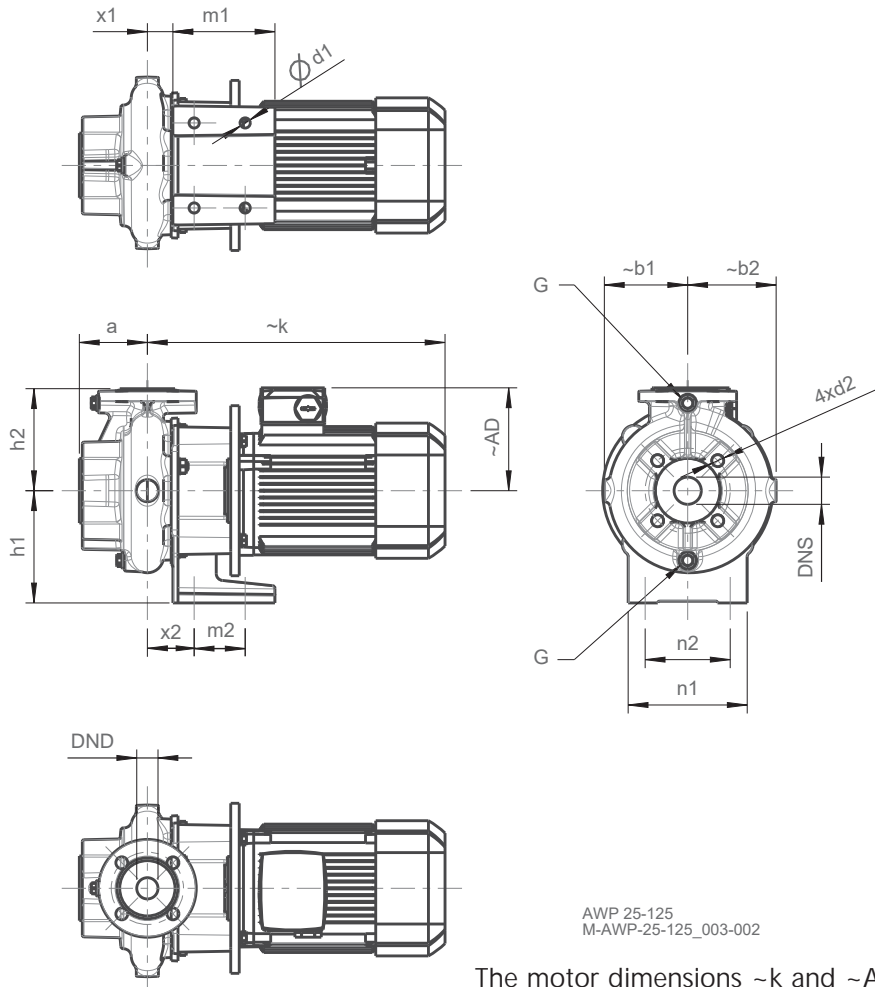
- ⦿ All dimensions are given in mm
- ⦿ Flanges are designed in accordance with EN 1092-2 PN16, PN25 or PN40 as standard
- ⦿ Flanges can alternatively be drilled in accordance with ANSI B16.5 150RF or 300RF
- ⦿ Weights of individual components are available on request for specific orders
- ⦿ All AWPTs are designed with a pump foot as standard (shown in the horizontal version)
- ⦿ Vertical AWPTs and AWPTs with a mounting system are shown without a pump foot

STROBL PUMPEN

Dimensional drawings

Block pumps with motor (extended shaft)

AWP (-C) 25-125



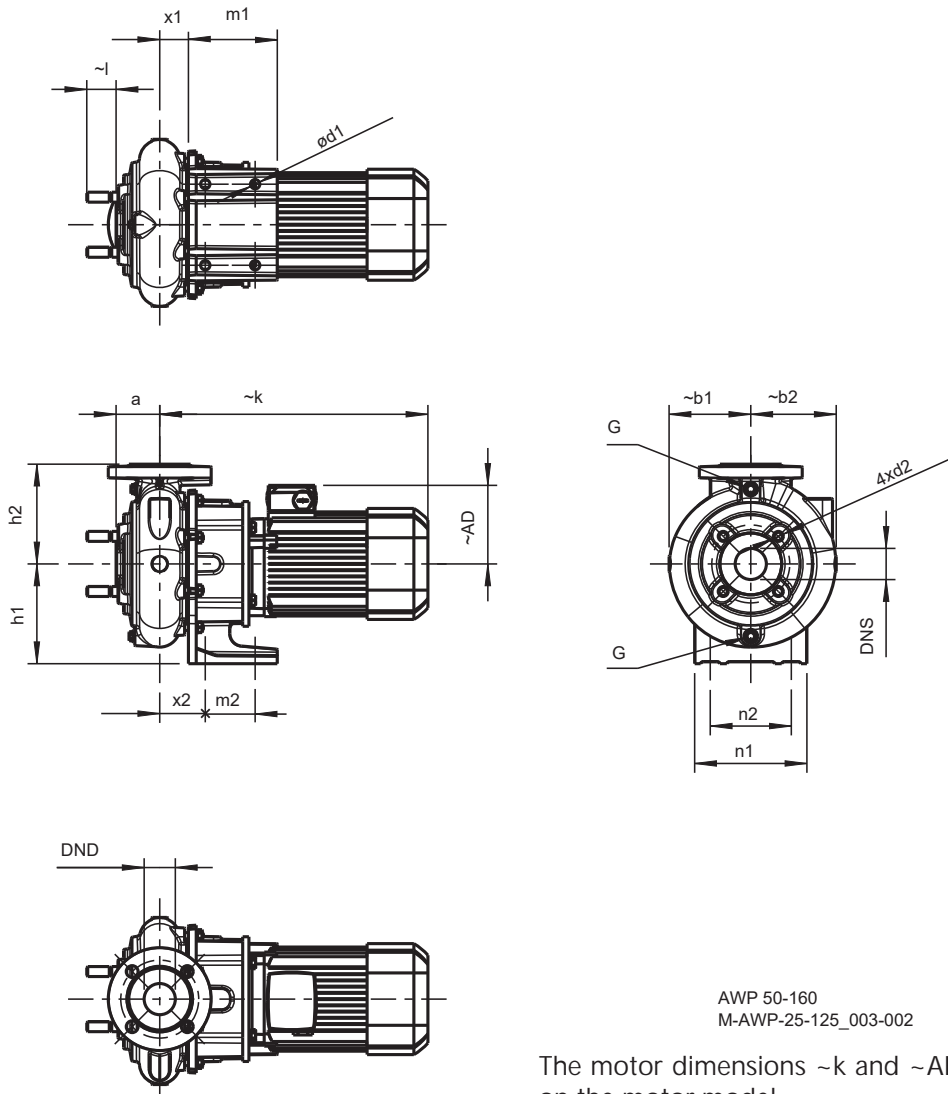
AWP 25-125
M-AWP-25-125_003-002

The motor dimensions ~k and ~AD can vary depending on the motor model.

The power rating changes for motors in the Ex e version.

Type	Motor	DNS	DND	a	~AD	~b1	~b2	d1	d2	G	h1	h2	~k	~l	m1	m2	n1	n2	x1	x2
AWP 25-125	71M	32	25	80	149	98	104	$\phi 12$	M16	1/4"	132	120	305	--	120	60	140	100	30	55
	80M				121								385							
	90S				126								395							
	90L				435															
	100L				166								492							

AWP (-C) 50-160



AWP 50-160
M-AWP-25-125_003-002

The motor dimensions ~k and ~AD can vary depending on the motor model.

The power rating changes for motors in the Ex e version.

Dimensional drawings

AWP

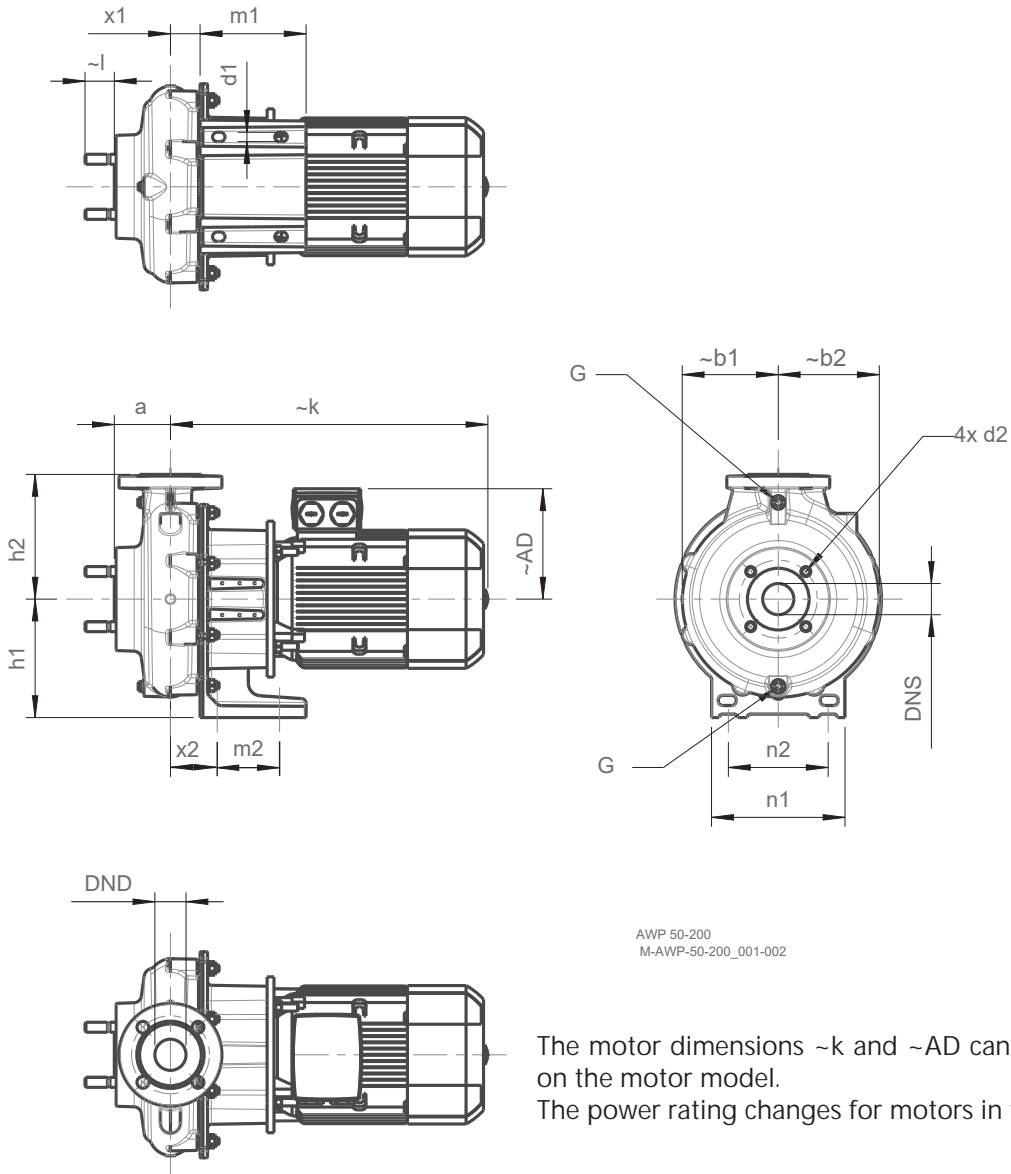
Type	Motor	DNS	DND	a	~AD	~b1	~b2	d1	d2	G	h1	h2	~k	~l	m1	m2	n1	n2	x1	x2
AWP 50-160	80M	50	50	70	121	131	137	ø15	M16	1/4"	160	160	420	47	142,5	80	180	130	46	73
	90S				430															
	90L				470															
	100L				504															
	112M				487															
	132S				588															

STROBL PUMPEN

AWP (-C) 50-200

Dimensional drawings

AWP

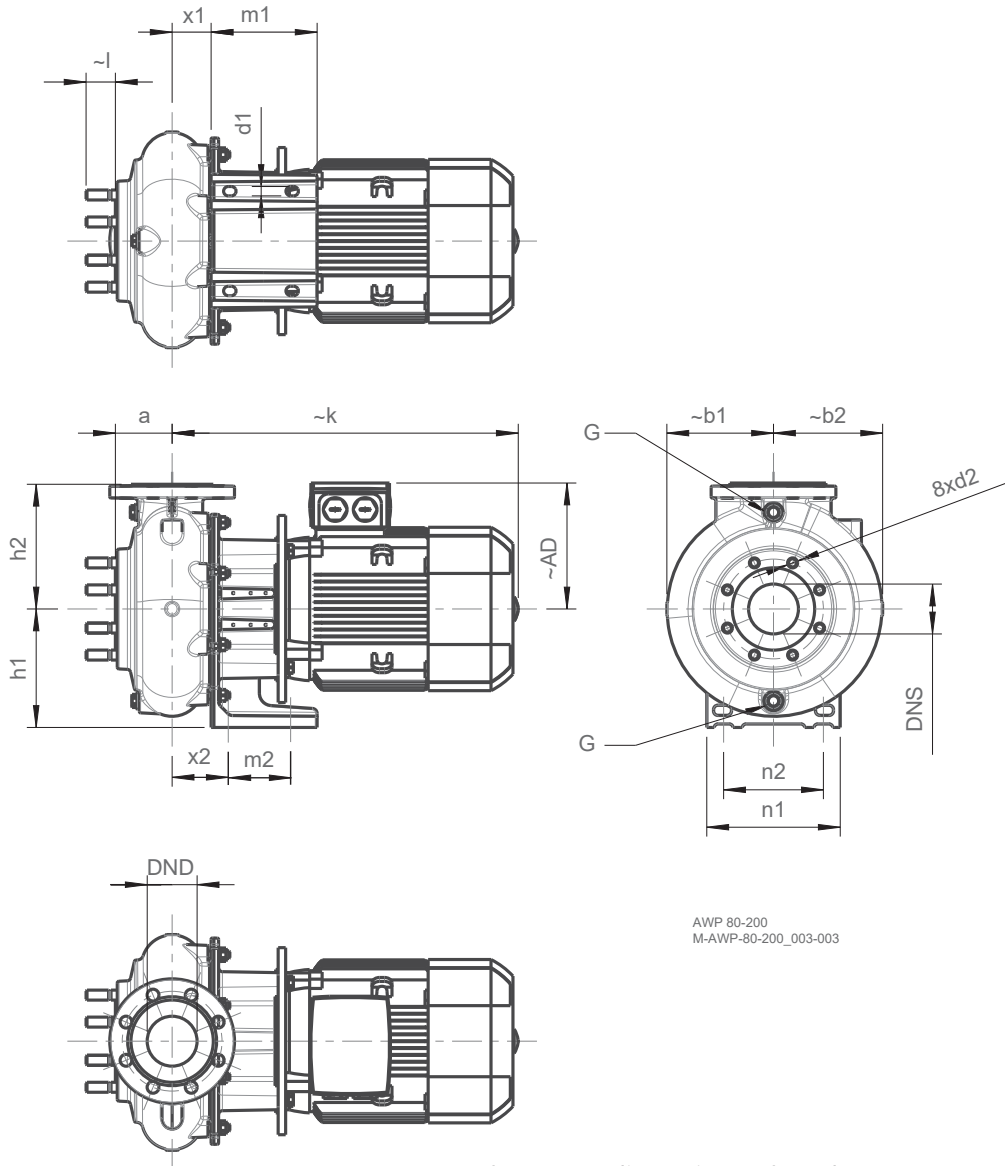


AWP 50-200
M-AWP-50-200_001-002

The motor dimensions ~k and ~AD can vary depending on the motor model.
The power rating changes for motors in the Ex e version.

Type	Motor	DNS	DND	a	~AD	~b1	~b2	d1	d2	G	h1	h2	~k	~l	m1	m2	n1	n2	x1	x2
AWP 50-200	100L	50	50	90	166	154	162	ø15x20	M16	1/4"	190	200	526	47	170	100	214	160	47,5	75
	112M				177								509							
	132S				202								540							
	132M				590															
	160M				237								669							

AWP (-C) 80-200



AWP 80-200
M-AWP-80-200_003-003

The motor dimensions $\sim k$ and $\sim AD$ can vary depending on the motor model.
The power rating changes for motors in the Ex e version.

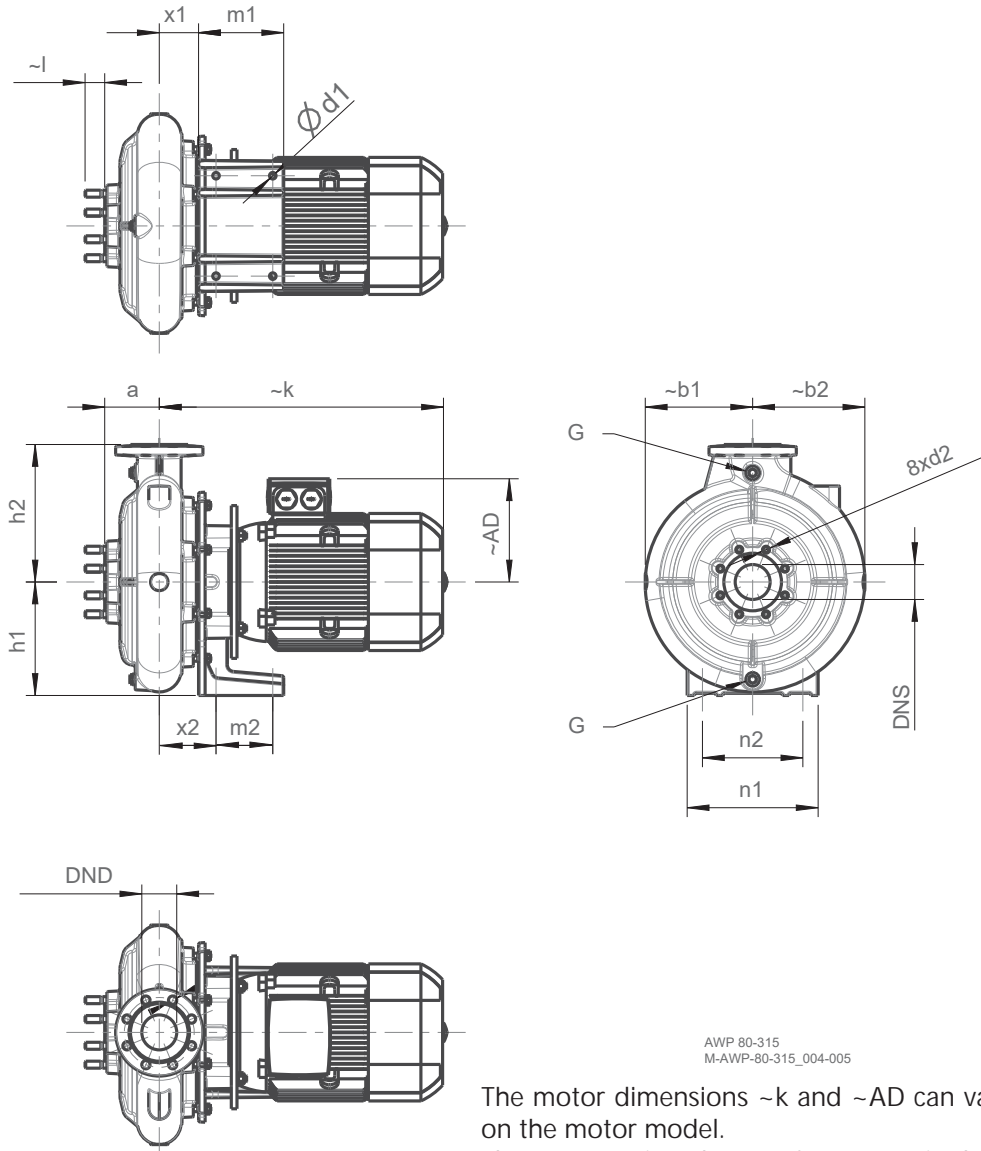
Dimensional drawings

AWP

Type	Motor	DNS	DND	a	$\sim AD$	$\sim b1$	$\sim b2$	d1	d2	G	h1	h2	$\sim k$	$\sim l$	m1	m2	n1	n2	x1	x2
AWP 80-200	100L	80	80	91	166	171	175	$\varnothing 15 \times 20$	M16	1/2"	190	200	541	47	170	100	214	160	62,5	90
	112M				177								524							
	132S				202								555							
	132M				237								684							
	160M				744															
	160L				744															

STROBL PUMPEN

AWP (-C) 80-315



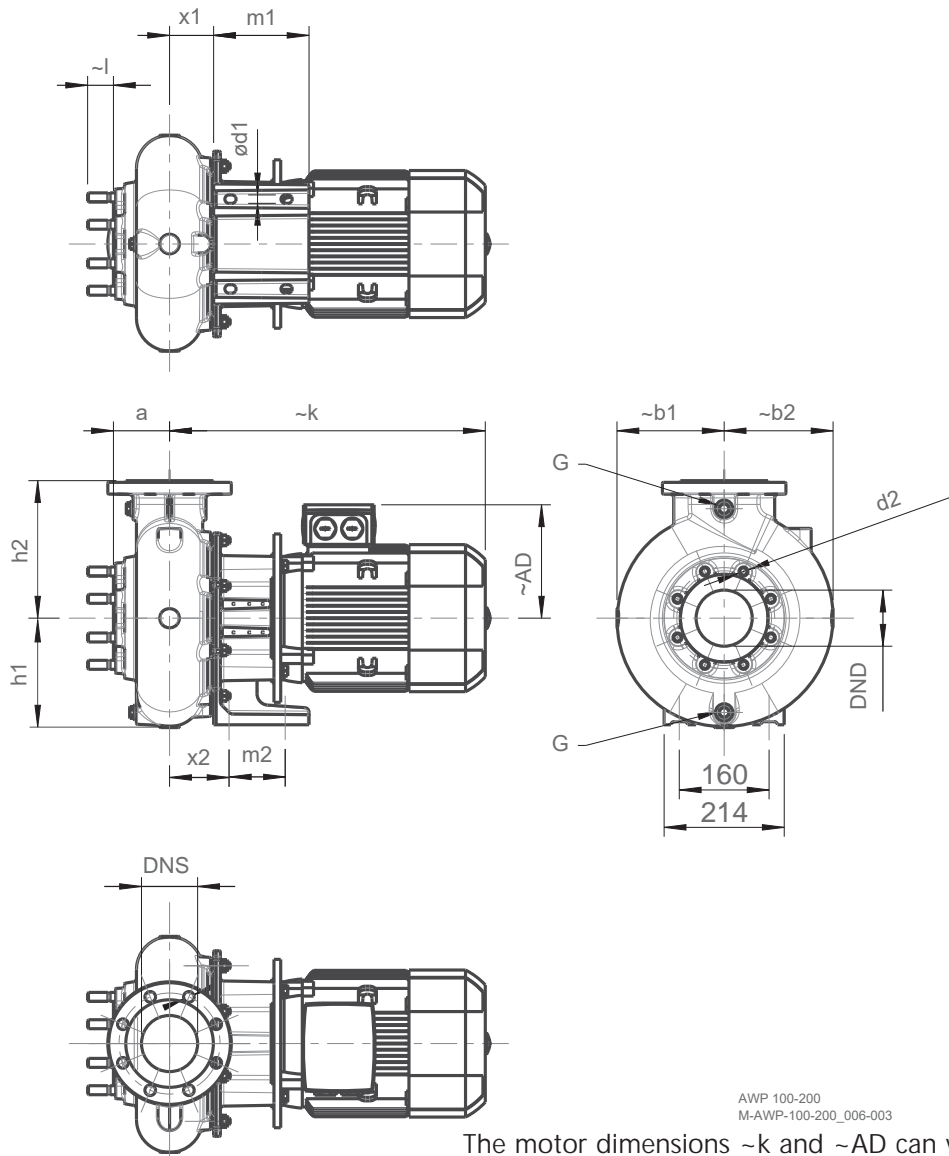
AWP 80-315
M-AWP-80-315_004-005

The motor dimensions ~k and ~AD can vary depending on the motor model.

The power rating changes for motors in the Ex e version.

Type	Motor	DNS	DND	a	~AD	~b1	~b2	d1	d2	G	h1	h2	~k	~l	m1	m2	n1	n2	x1	x2
AWP 80-315	132S / 132M	80	80	125	202	246	257	ø15	M16	1/2"	260	315	600	45	195	130	300	230	90	130
	160M				651															
	160L				719															
	180M / 180L				753															
	200L				826															

AWP (-C) 100-200



AWP 100-200
M-AWP-100-200_006-003

The motor dimensions ~k and ~AD can vary depending on the motor model.

The power rating changes for motors in the Ex e version.

Dimensional drawings

AWP

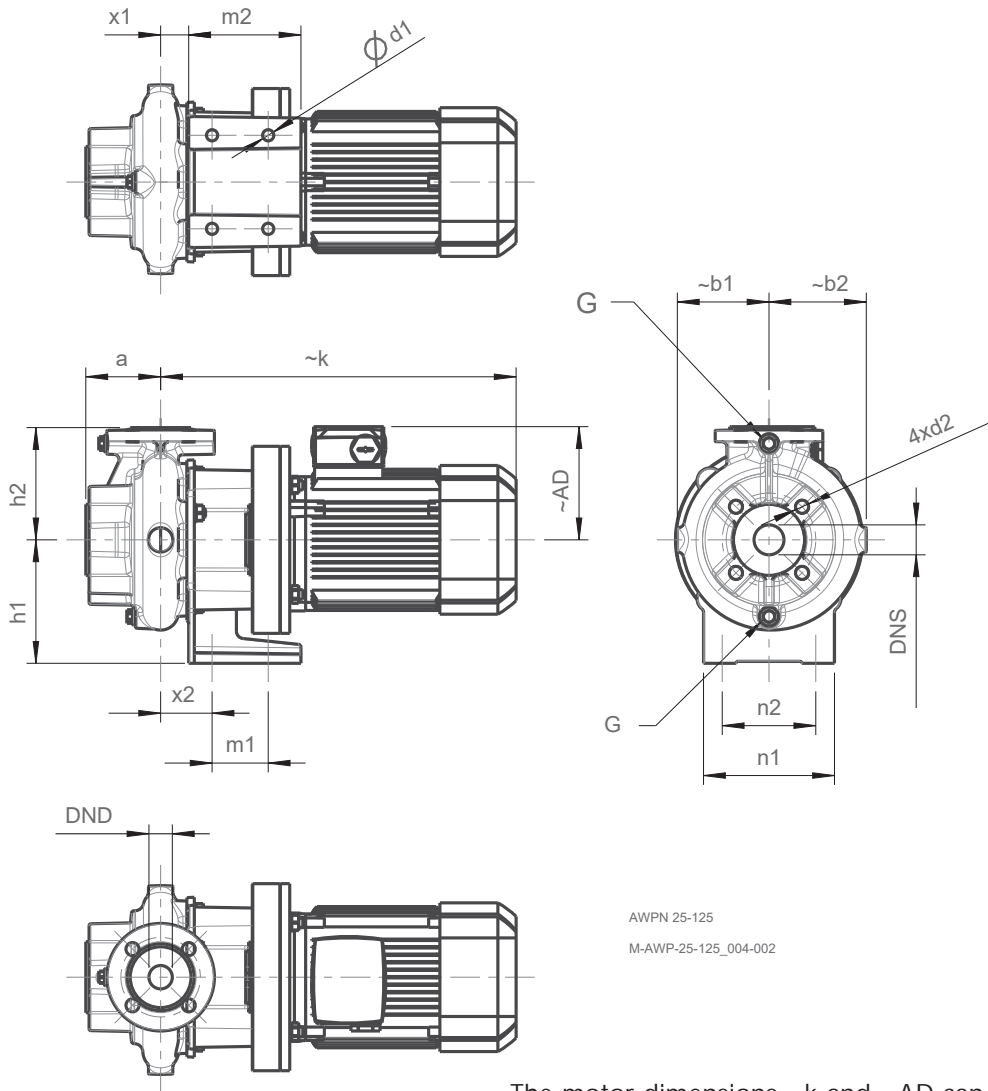
Type	Motor	DNS	DND	a	~AD	~b1	~b2	d1	d2	G	h1	h2	~k	~l	m1	m2	n1	n2	x1	x2
AWP 100-200	100L	100	100	100	166	191	194	ø15x20	M16	1/2"	195	245	557	46	170	100	214	160	78,5	106
	112M				177								540							
	132S / 132M				202								621							
	160M				237								700							
	160L												760							

STROBL PUMPEN

Block pumps with standard motor
AWPN (-C) 25-125

Dimensional drawings

AWPN

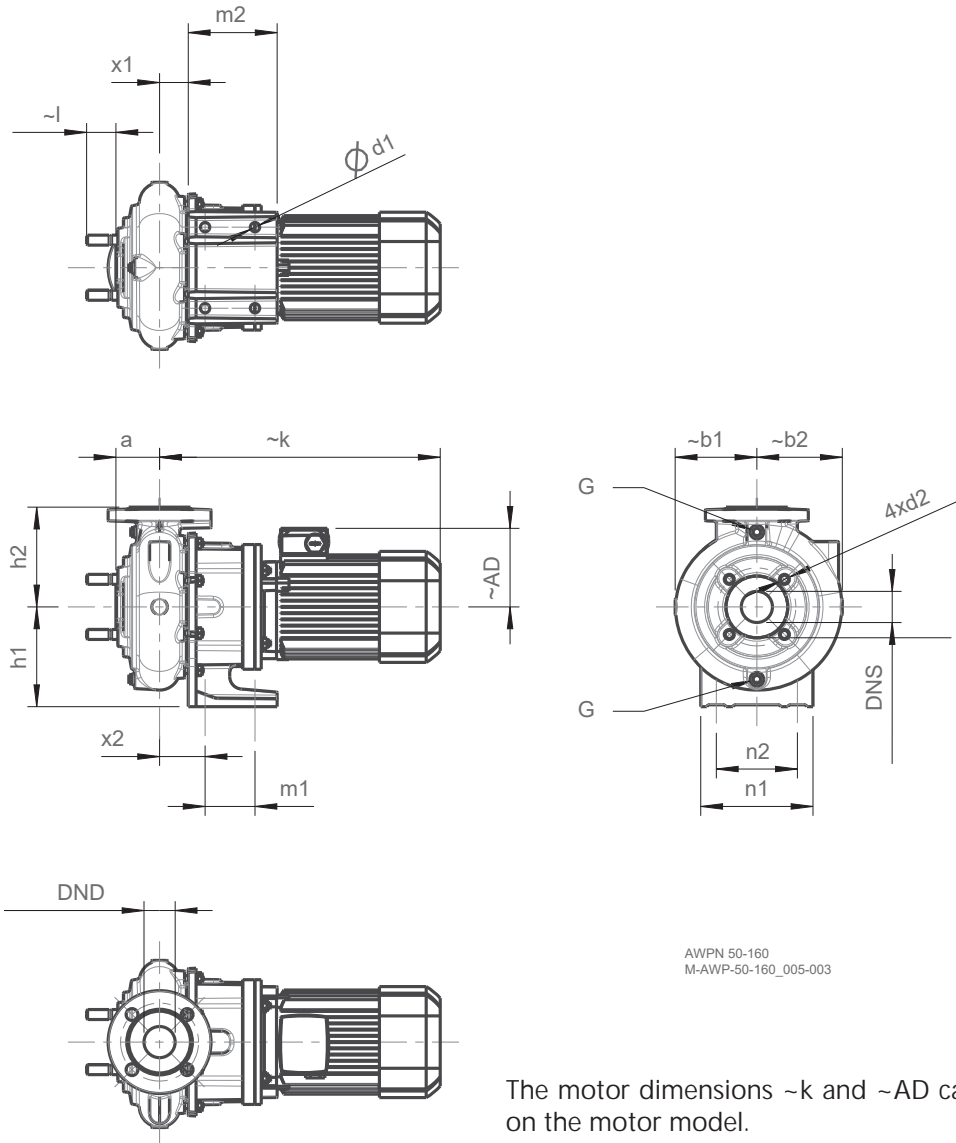


AWPN 25-125
M-AWP-25-125_004-002

The motor dimensions ~k and ~AD can vary depending on the motor model.
The power rating changes for motors in the Ex e version.

Typ	Motor	DNS	DND	a	~AD	~b1	~b2	d1	d2	G	h1	h2	~k	~l	m1	m2	n1	n2	x1	x2
AWPN 25-125	71M	32	25	80	149	98	104	ø12	M16	1/4"	132	120	325	--	120	60	140	100	30	55
	80M				121								415							
	90S				126								425							
	90L				465															
	100L				166								522							

AWPN (-C) 50-160



Dimensional drawings

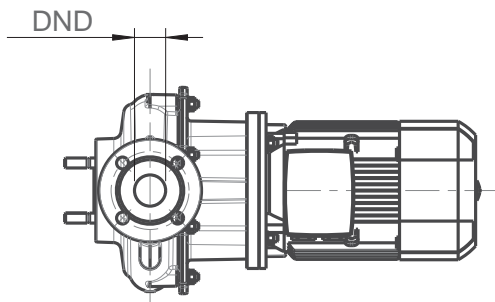
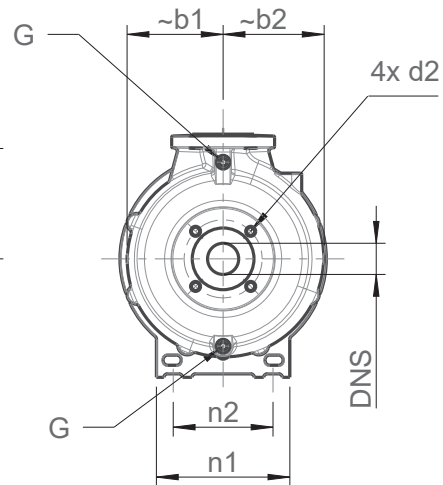
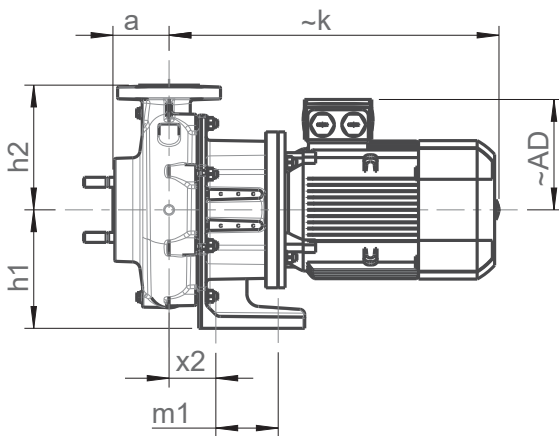
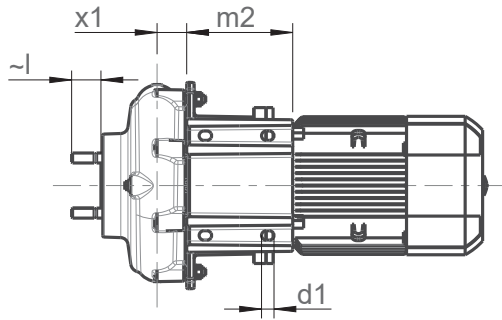
AWPN

The motor dimensions ~k and ~AD can vary depending on the motor model.
The power rating changes for motors in the Ex e version.

Typ	Motor	DNS	DND	a	~AD	~b1	~b2	d1	d2	G	h1	h2	~k	~l	m1	m2	n1	n2	x1	x2
AWPN 50-160	80M	50	50	70	121	131	137	ø15	M16	1/4"	160	160	440	47	142,5	80	180	130	46	73
	90S				126								450							
	90L				166								490							
	100L				177								549							
	112M				202								532							
	132S				237								633							
	160M				741															
	160L				782															

STROBL PUMPEN

AWPN (-C) 50-200



AWPN 50-200
M-AWP-50-200_002-002

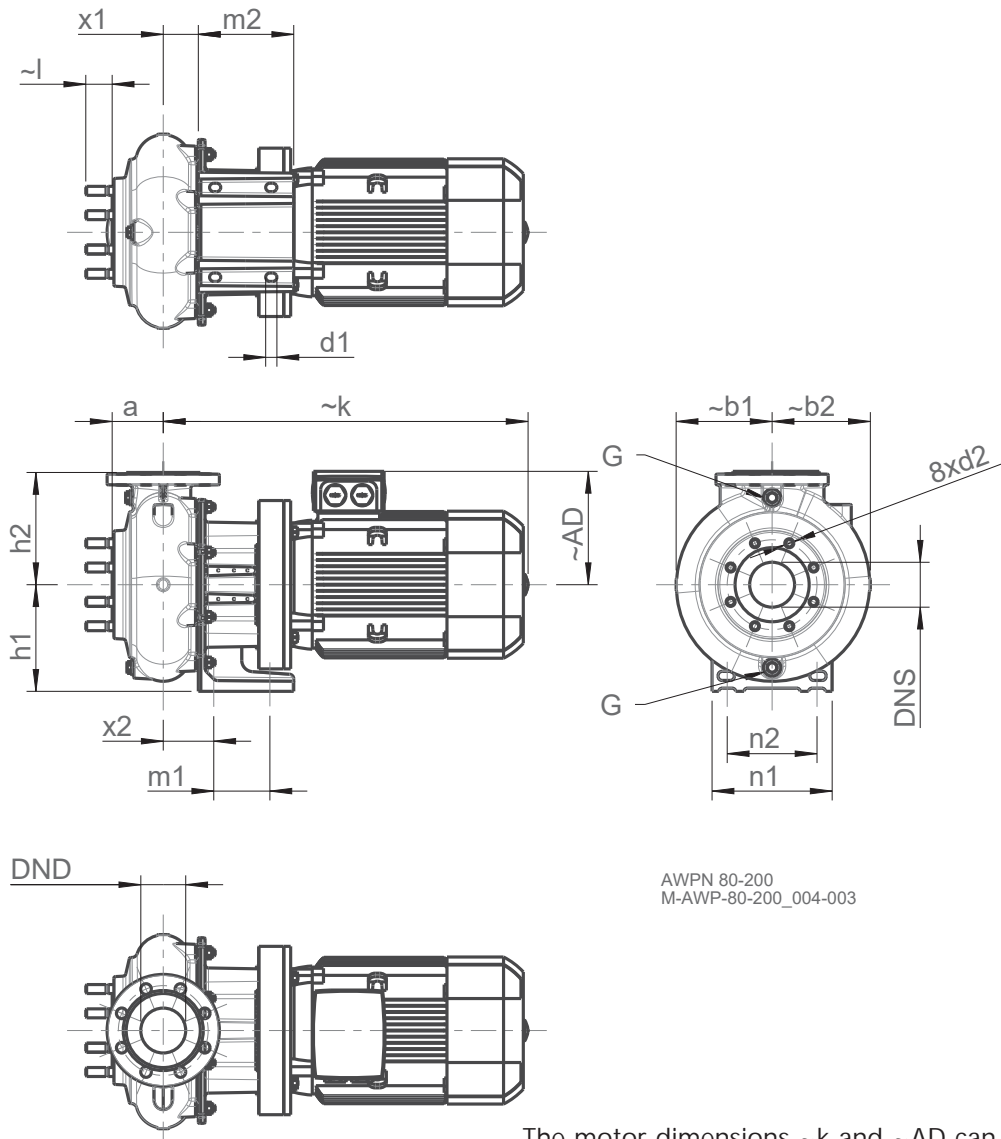
The motor dimensions ~k and ~AD can vary depending on the motor model.

The power rating changes for motors in the Ex e version.

Typ	Motor	DNS	DND	a	~AD	~b1	~b2	d1	d2	G	h1	h2	~k	~l	m1	m2	n1	n2	x1	x2
AWPN 50-200	100L	50	50	90	166	154	162	ø15x20	M16	1/4"	190	200	546	47	170	100	214	160	47,5	75
	112M				177								529							
	132S / 132M				202								635							
	160M				237								724							



AWPN (-C) 80-200



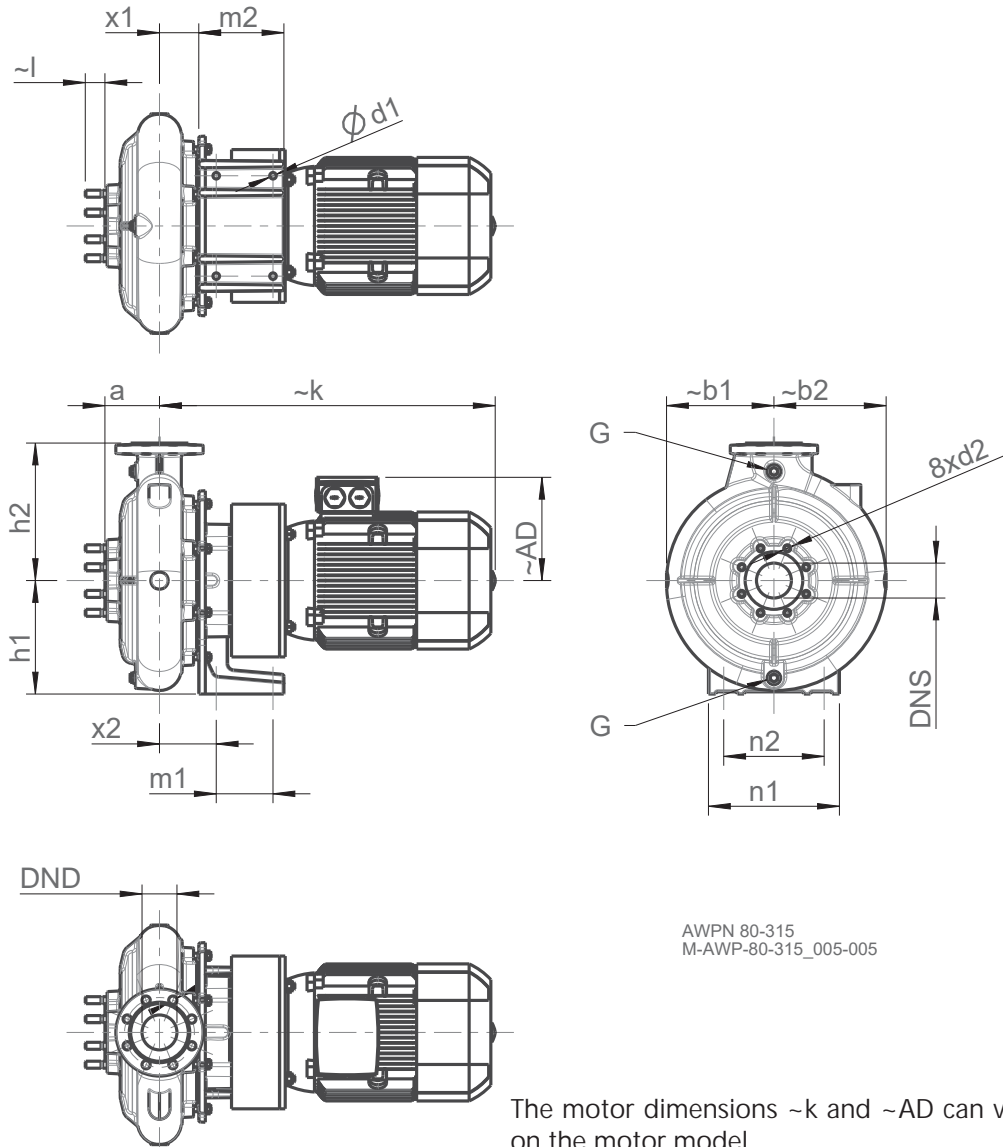
AWPN 80-200
M-AWP-80-200_004-003

The motor dimensions ~k and ~AD can vary depending on the motor model.
The power rating changes for motors in the Ex e version.

Typ	Motor	DNS	DND	a	~AD	~b1	~b2	d1	d2	G	h1	h2	~k	~l	m1	m2	n1	n2	x1	x2
AWPN 80-200	100L	80	80	91	166	171	175	ø15x20	M16	1/2"	190	200	560	47	170	100	214	160	62,5	90
	112M				177								554							
	132S / 132M				202								650							
	160M				237								739							
	160L				237								799							

STROBL PUMPEN

AWPN (-C) 80-315



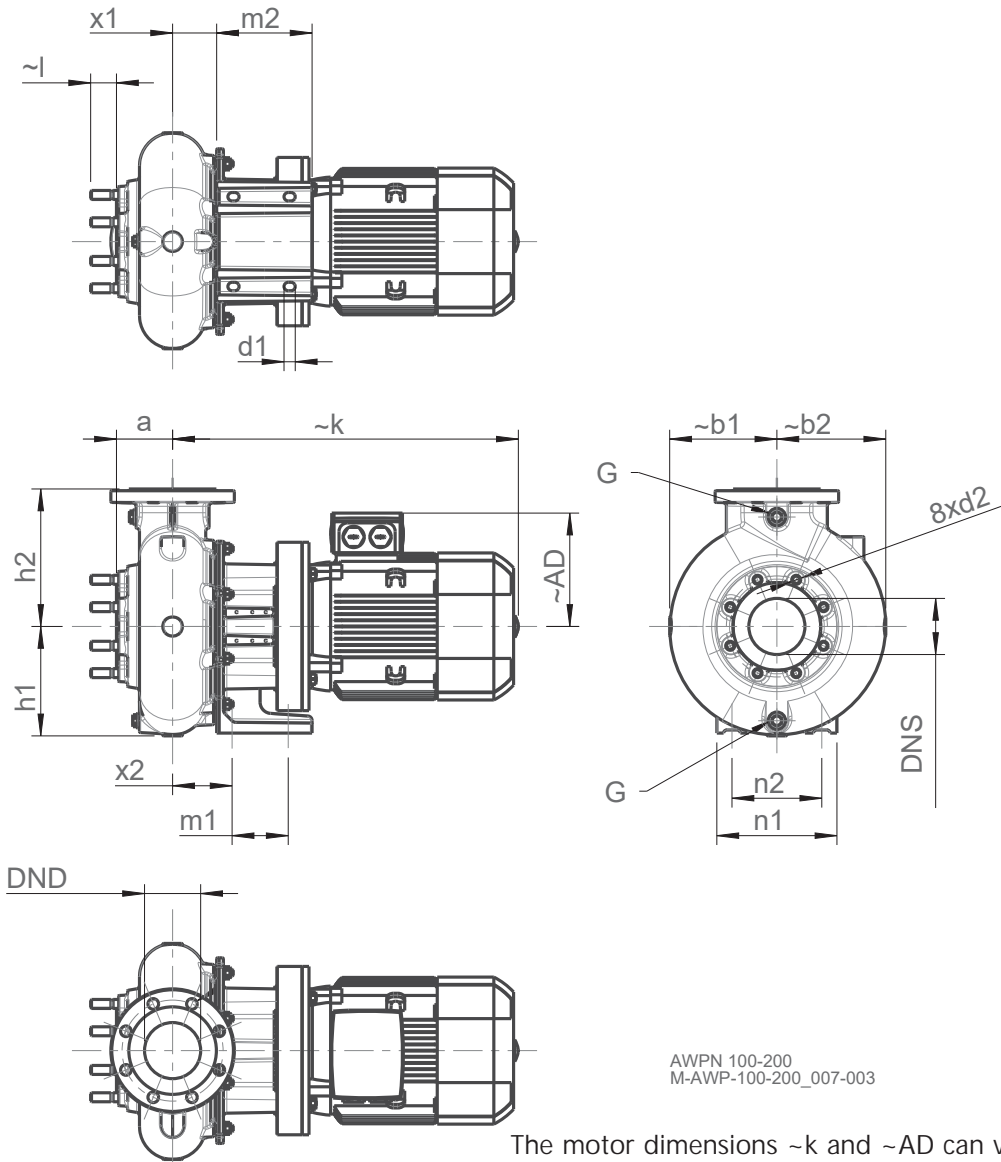
AWPN 80-315
M-AWP-80-315_005-005

The motor dimensions ~k and ~AD can vary depending on the motor model.

The power rating changes for motors in the Ex e version.

Type	Motor	DNS	DND	a	~AD	~b1	~b2	d1	d2	G	h1	h2	~k	~l	m1	m2	n1	n2	x1	x2
AWPN 80-315	132S / 132M	80	80	125	202	246	257	ø15	M16	1/2"	260	315	675	45	195	130	300	230	90	130
	160M				769															
	160L				829															
	180M / 180L				863															
	200L				911															
	225S				953															

AWPN (-C) 100-200



AWPN 100-200
M-AWP-100-200_007-003

The motor dimensions ~k and ~AD can vary depending on the motor model.
The power rating changes for motors in the Ex e version.

Dimensional drawings

AWPN

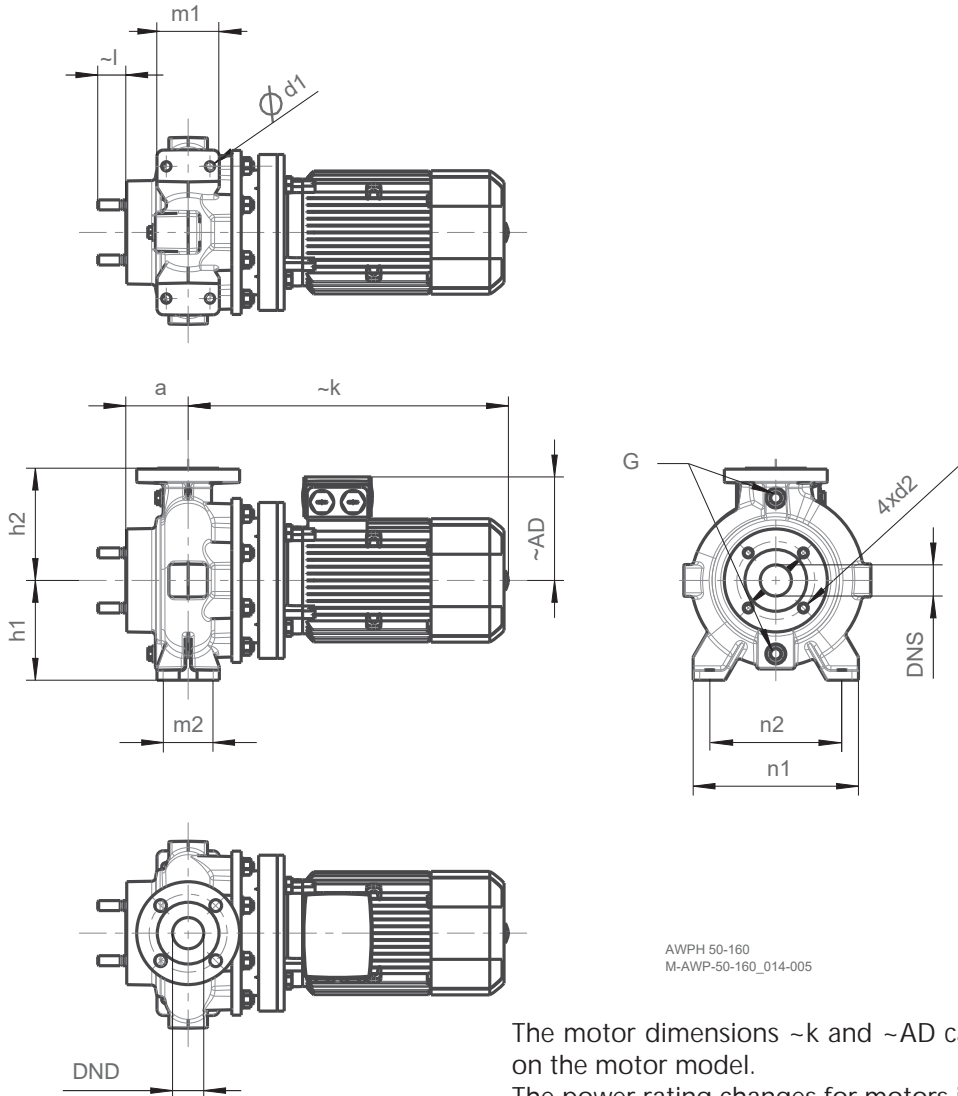
Typ	Motor	DNS	DND	a	~AD	~b1	~b2	d1	d2	G	h1	h2	~k	~l	m1	m2	n1	n2	x1	x2
AWPN 100-200	100L	100	100	100	166	191	194	ø15x20	M16	1/2"	195	245	577	46	170	100	214	160	78,5	106
	112M				177								560							
	132S / 132M				202								666							
	160M				237								755							
	160L				815															

STROBL PUMPEN

Block pumps for high system pressure with motor (extended shaft)

AWPH (-C) 50-160

Dimensional drawings



AWPH 50-160
M-AWP-50-160_014-005

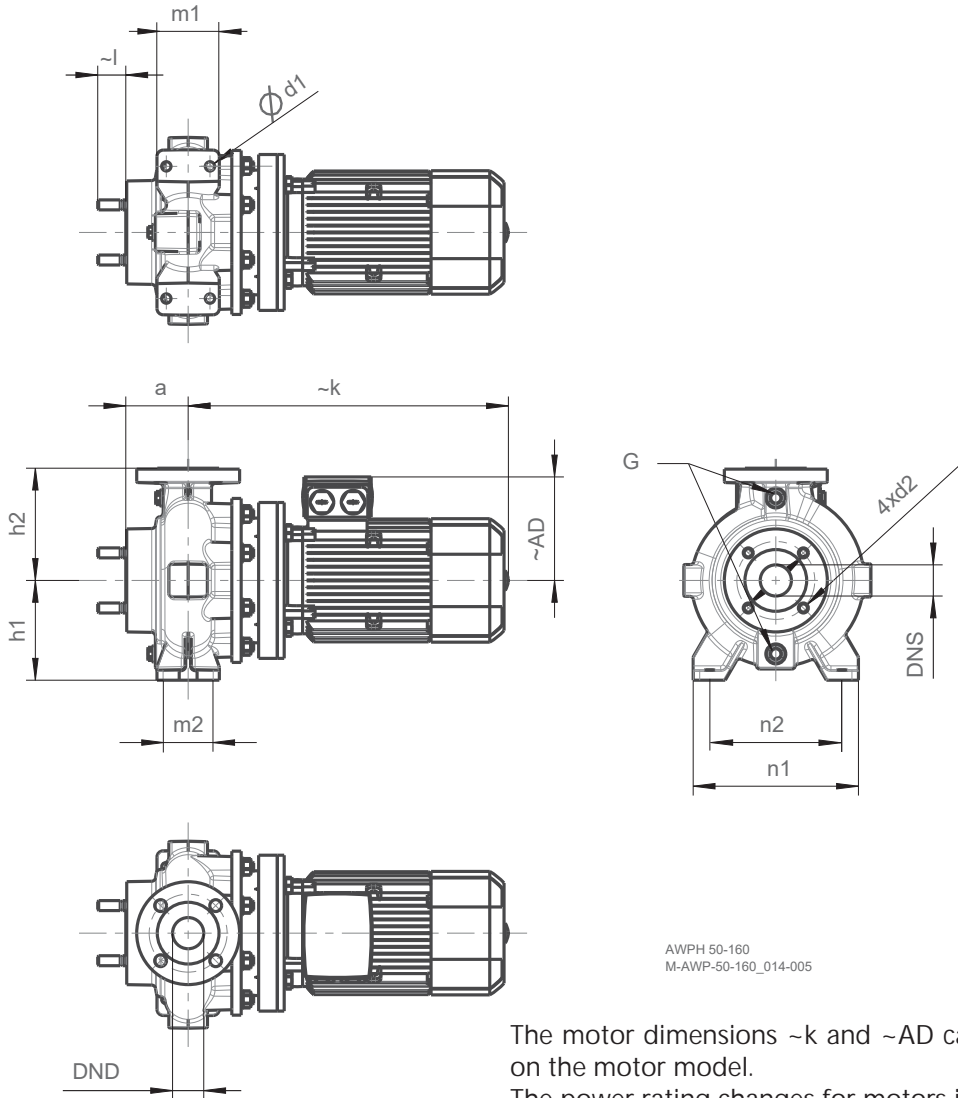
The motor dimensions ~k and ~AD can vary depending on the motor model.

The power rating changes for motors in the Ex e version.

AWPH

Type	Motor	DNS	DND	a	~AD	d1	d2	G	h1	h2	~k	~l	m1	m2	n1	n2
AWPH 50-160	80M	50	50	100	121	ø15	M16	1/2"	160	180	430	--	70	100	265	212
	90S				126						440					
	90L				166						480					
	100L				177						514					
	112M				202						497					
	132S				237						578					
	160M										637					

AWPH (-C) 50-200



AWPH 50-160
M-AWP-50-160_014-005

The motor dimensions ~k and ~AD can vary depending on the motor model.
The power rating changes for motors in the Ex e version.

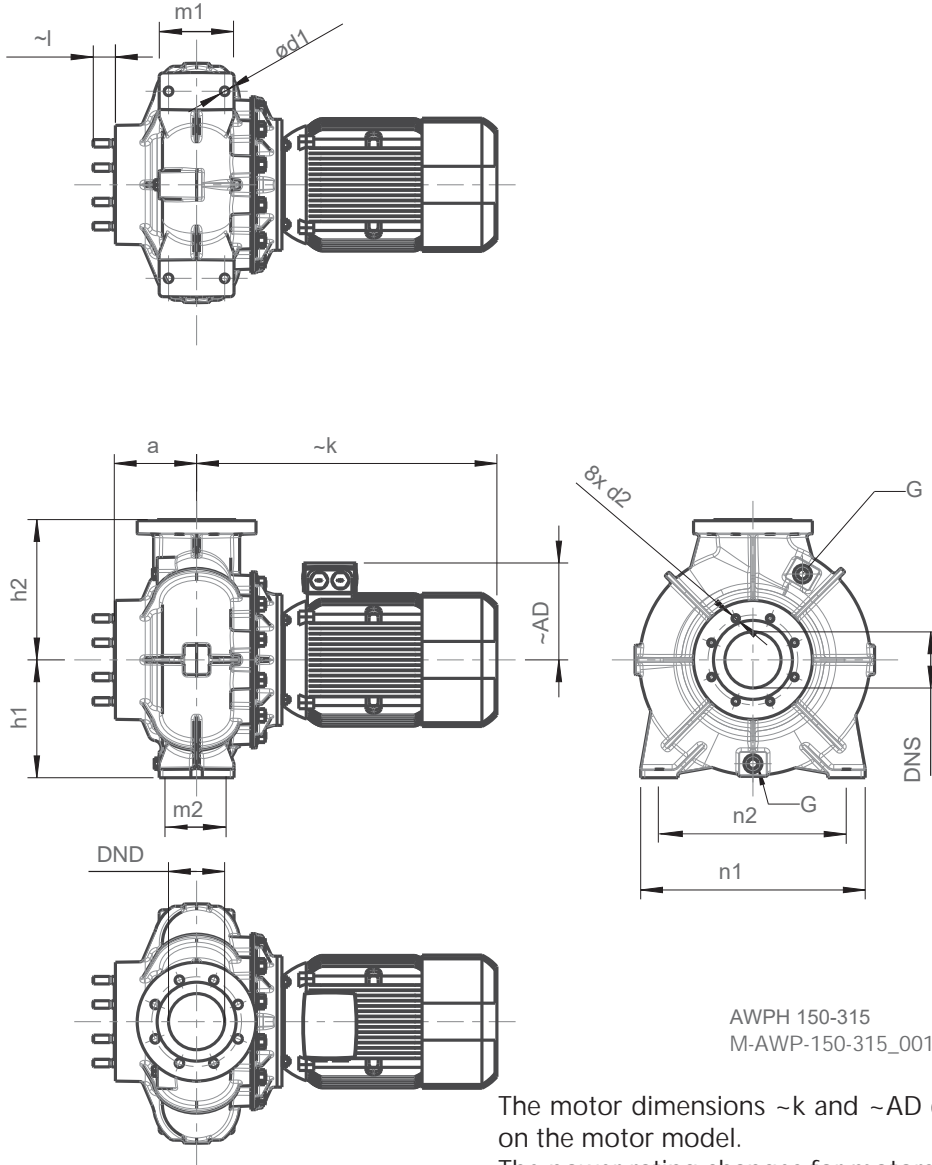
Dimensional drawings

AWPH

Type	Motor	DNS	DND	a	~AD	d1	d2	G	h1	h2	~k	~l	m1	m2	n1	n2
AWPH 50-200	90S	50	50	100	126	ø15	M16	1/2"	180	225	452	45	95	125	330	250
	90L				492											
	100L				526											
	112M				509											
	132S / 132M				590											
	160M				649											
	160L				709											
	180M				743											
200L	791															

STROBL PUMPEN

AWPH (-C) 80-200



AWPH 150-315
M-AWP-150-315_001-005

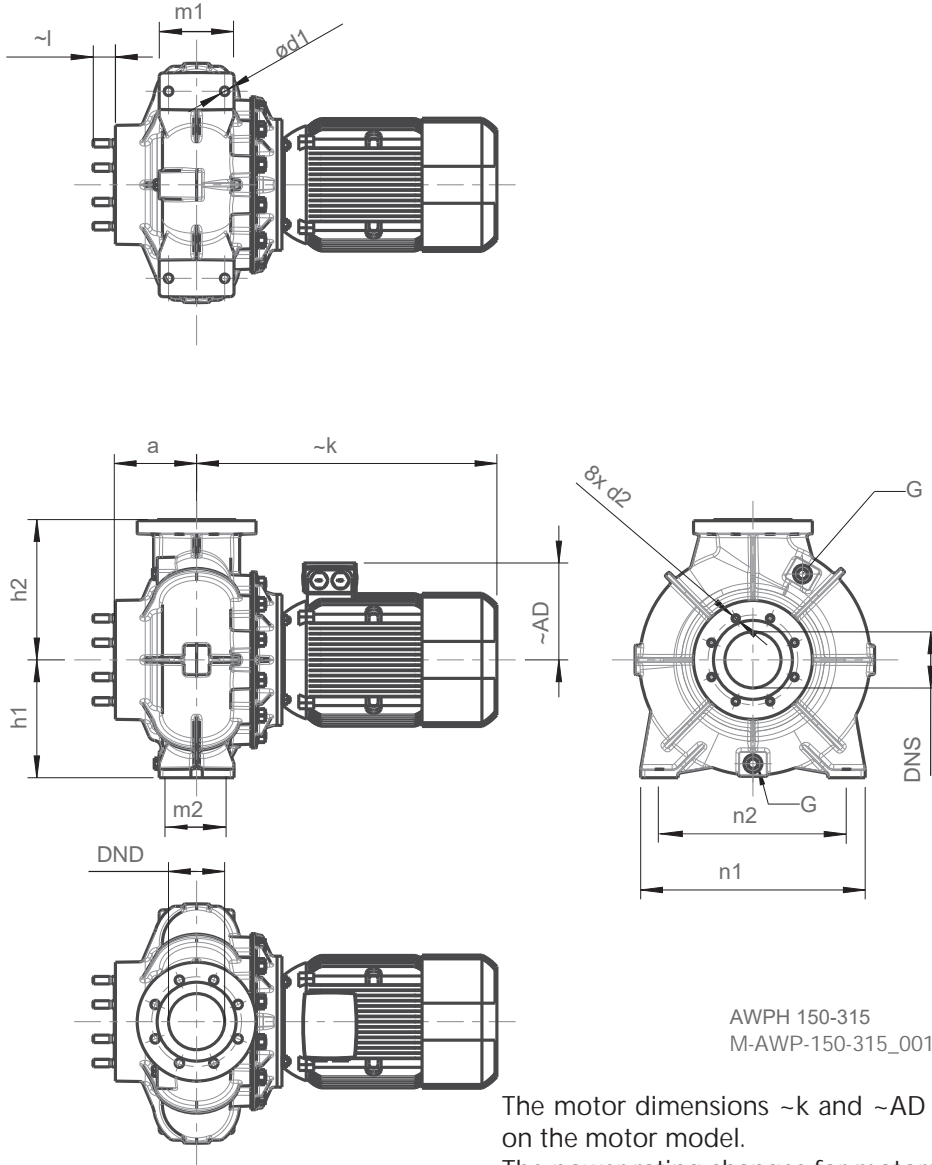
The motor dimensions ~k and ~AD can vary depending on the motor model.

The power rating changes for motors in the Ex e version.

Type	Motor	DNS	DND	a	~AD	d1	d2	G	h1	h2	~k	~l	m1	m2	n1	n2
AWPH 80-200	90S	80	80	125	126	ø19	M16	1/2"	200	250	497	45	120	160	362	280
	90L				507											
	100L				541											
	112M				524											
	132S / 132M				605											
	160M				664											
	160L				724											
	180M				758											
	200L				806											
	225M				878											



AWPH (-C) 150-315



AWPH 150-315
M-AWP-150-315_001-005

The motor dimensions ~k and ~AD can vary depending on the motor model.
The power rating changes for motors in the Ex e version.

Dimensional drawings

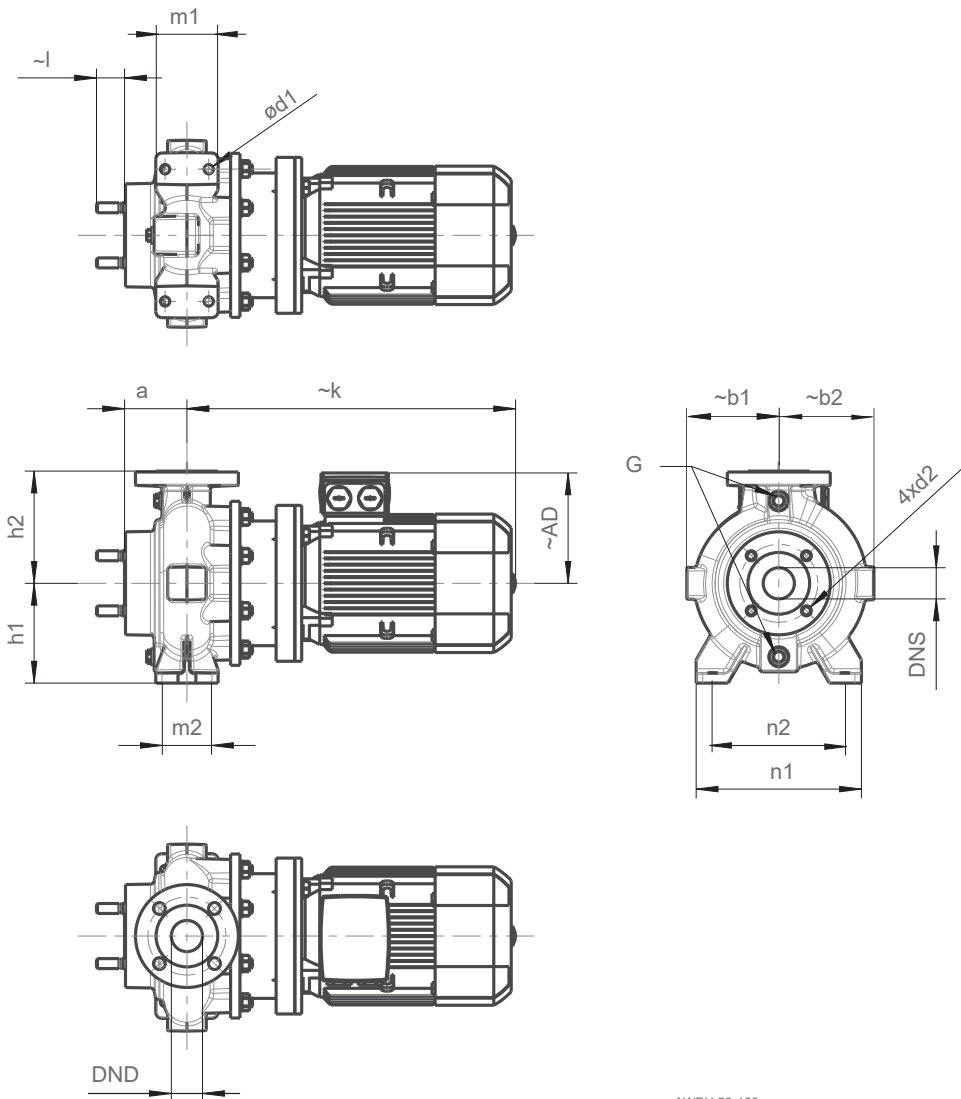
AWPH

Type	Motor	DNS	DND	a	~AD	d1	d2	G	h1	h2	~k	~l	m1	m2	n1	n2
AWPH 150-315	132M	150	150	22	202	ø23	M20	1"	315	375	680	60	150	200	600	500
	160M				237						699					
	160L				237						759					
	180M / 180L				259						803					
	200L				296						876					
	225S				338						888					
	225M				338						948					

STROBL PUMPEN

Block pumps for high pressure systems with standard motor
AWPHN (-C) 50-160

Dimensional drawings



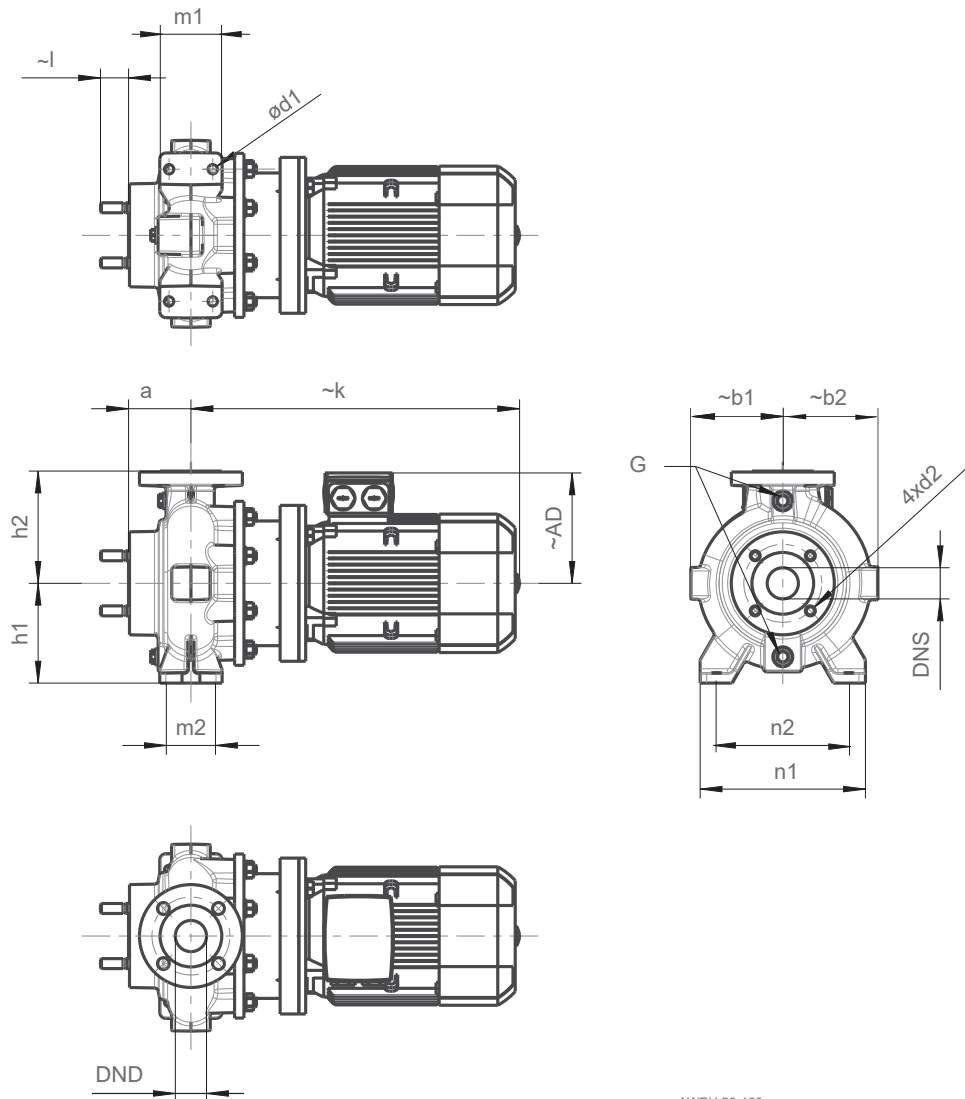
AWPH 50-160
M-AWP-50-160_015-006

The motor dimensions $\sim k$ and $\sim AD$ can vary depending on the motor model.
The power rating changes for motors in the Ex e version.

AWPHN

Type	Motor	DNS	DND	a	$\sim AD$	d1	d2	G	h1	h2	$\sim k$	$\sim l$	m1	m2	n1	n2
AWPHN 50-160	80M	50	50	100	121	$\varnothing 15$	M16	1/2"	160	180	477	45	70	100	265	212
	90S				126						487					
	90L				126						527					
	100L				166						544					
	112M				177						527					
	132S				202						643					
	160M				237						732					

AWPHN (-C) 50-200



AWPH 50-160
M-AWP-50-160_015-006

The motor dimensions ~k and ~AD can vary depending on the motor model.
The power rating changes for motors in the Ex e version.

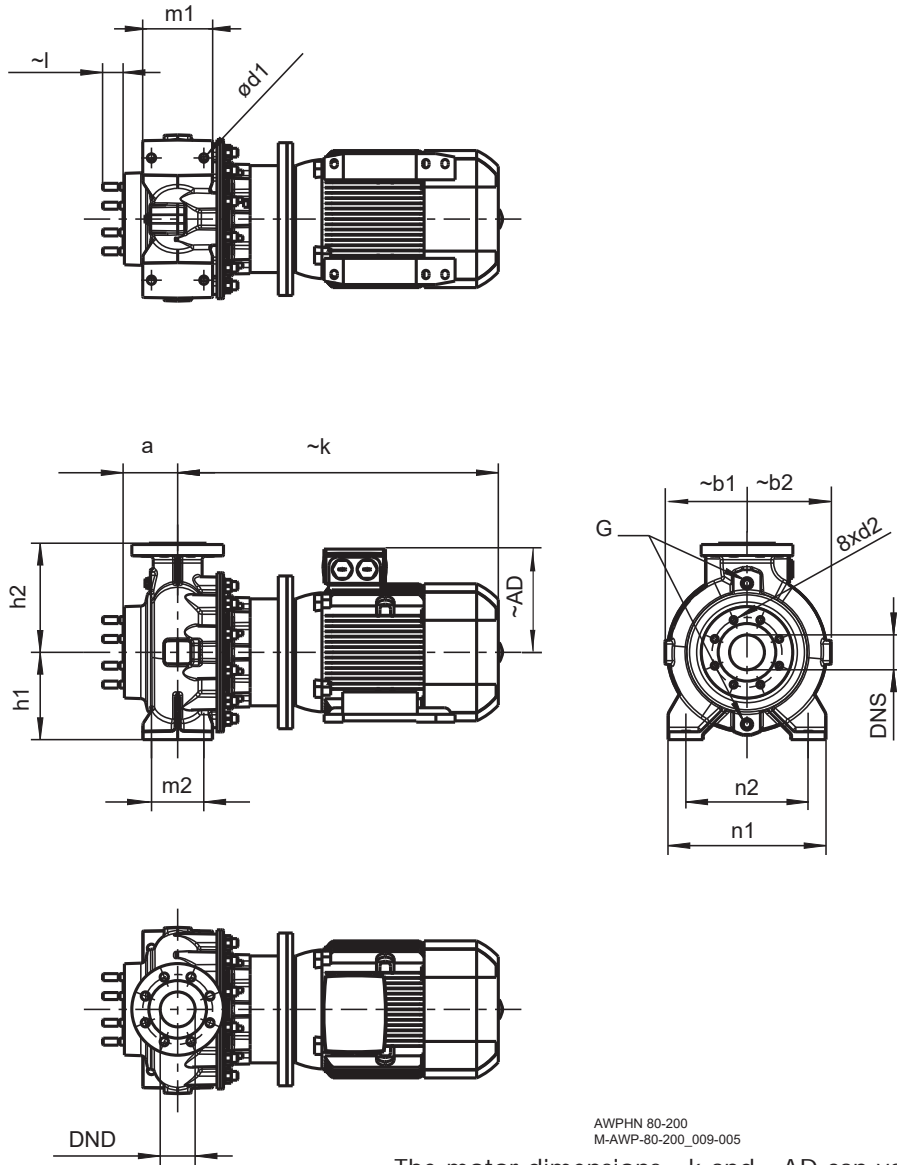
Type	Motor	DNS	DND	a	~AD	d1	d2	G	h1	h2	~k	~l	m1	m2	n1	n2
AWPH 50-200	90S	50	50	100	126	ø15	M16	1/2"	180	225	452	45	95	125	330	250
	90L				492											
	100L				166						526					
	112M				177						509					
	132S / 132M				202						590					
	160M				237						649					
	160L				259						709					
	180M				259						743					
	200L				296						791					

Dimensional drawings

AWPHN

STROBL PUMPEN

AWPHN (-C) 80-200



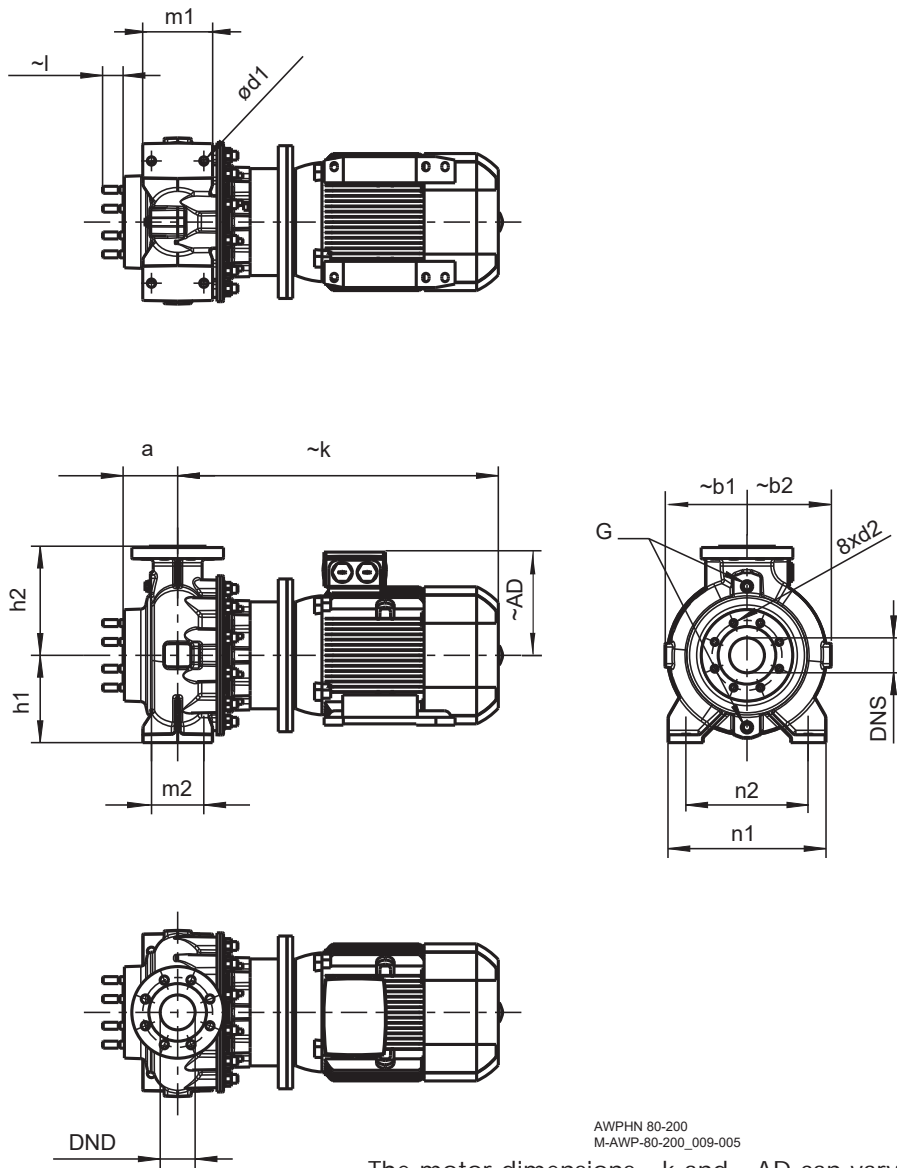
AWPHN 80-200
M-AWP-80-200_009-005

The motor dimensions ~k and ~AD can vary depending on the motor model.

The power rating changes for motors in the Ex e version.

Type	Motor	DNS	DND	a	~AD	d1	d2	G	h1	h2	~k	~l	m1	m2	n1	n2
AWPHN 80-200	90S	80	80	125	126	ø19	M16	1/2"	200	250	492	45	120	160	362	280
	90L				532											
	100L				166						576					
	112M				177						559					
	132S / 132M				202						650					
	160M				237						739					
	160L				237						799					
	180M				259						833					
	200L				296						881					
	225M				338						953					

AWPHN (-C) 150-315



AWPHN 80-200
M-AWP-80-200_009-005

The motor dimensions ~k and ~AD can vary depending on the motor model.
The power rating changes for motors in the Ex e version.

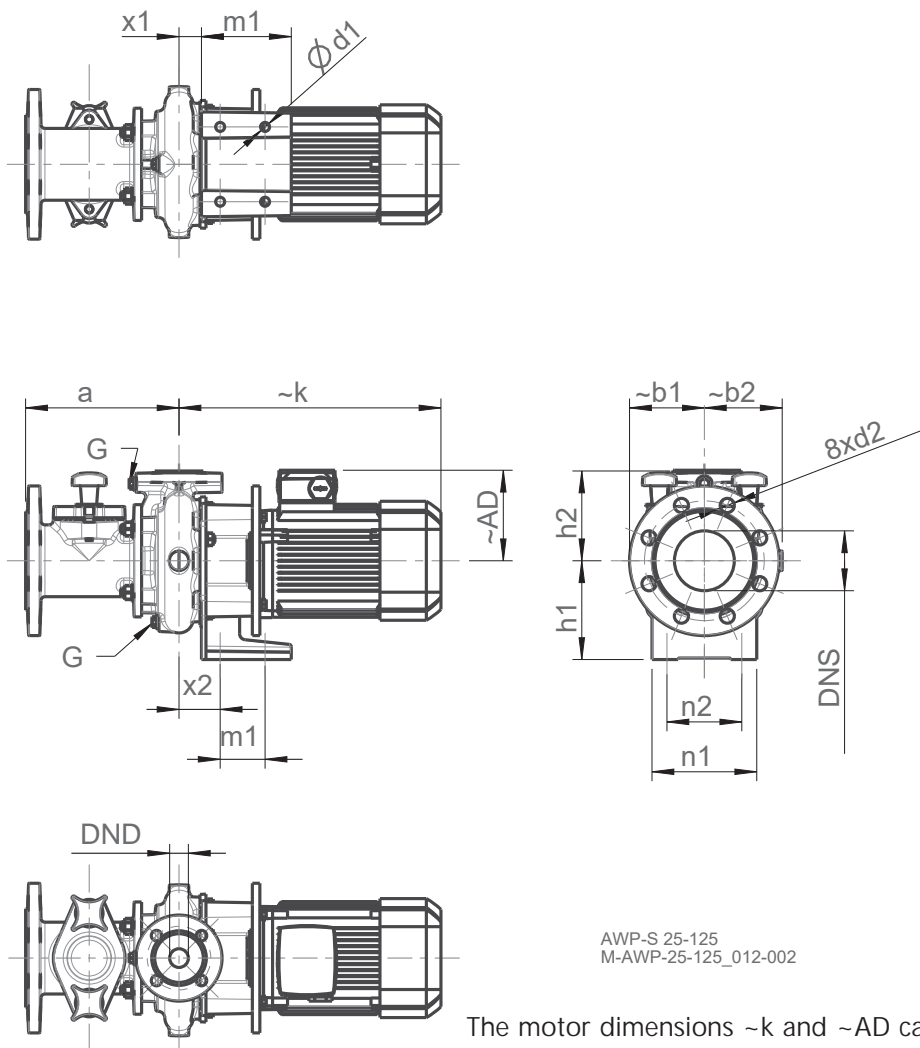
Dimensional drawings

AWPHN

Type	Motor	DNS	DND	a	~AD	d1	d2	G	h1	h2	~k	~l	m1	m2	n1	n2
AWPHN 150-315	132M	150	150	220	202	ø23	M20	1"	315	375	752	60	150	200	600	500
	160M				809											
	160L				869											
	180M / 180L				913											
	200L				961											
	225S				1003											
	225M				1063											

STROBL PUMPEN

Block pumps with motor (extended shaft) and cutting device/cleaning piece
AWP-S/-P 25-125



AWP-S 25-125
M-AWP-25-125_012-002

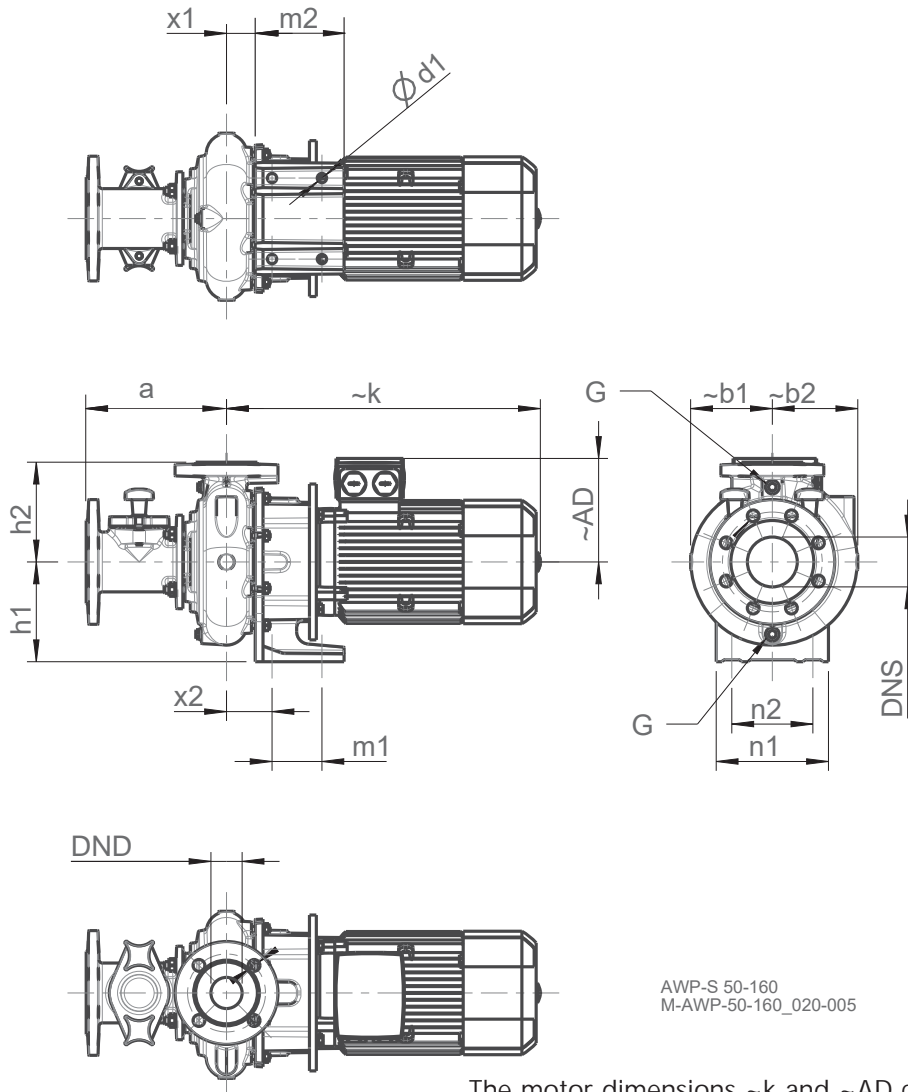
The motor dimensions ~k and ~AD can vary depending on the motor model.
The power rating changes for motors in the Ex e version.

Type	Motor	DNS	DND	a	~AD	d1	G	h1	h2	~k	m1	m2	n1	n2	x1	x2
AWP-S 25-125	80M	80	25	205	121	ø12	1/4"	132	120	385	60	120	140	100	30	55
	90S				126					395						
	90L				166					435						
	100L				166					492						

AWP-S/-P 50-160



Dimensional drawings



AWP-S 50-160
M-AWP-50-160_020-005

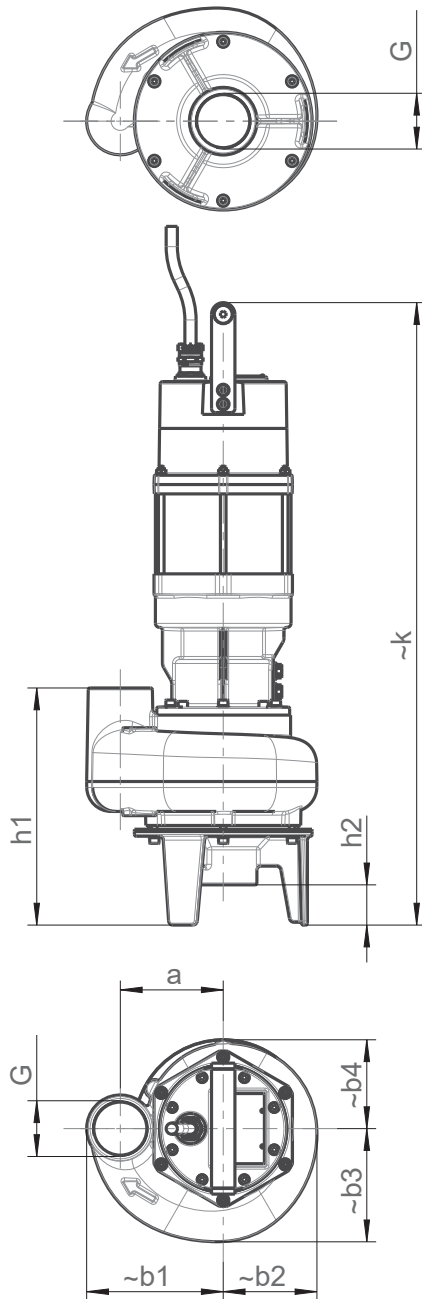
The motor dimensions ~k and ~AD can vary depending on the motor model.
The power rating changes for motors in the Ex e version.

AWP-S

Type	Motor	DNS	DND	a	~AD	d1	G	h1	h2	~k	m1	m2	n1	n2	x1	x2
AWP-S 50-160	90L	80	50	225	126	$\phi 15$	1/4"	160	160	470	80	142,5	180	130	73	46
	100L				166					503						
	112M				177					487						
	132S				202					580						

STROBL PUMPEN

Block pumps with submersible motor
AWPT-D / -K2 50-125



AWPT-D 50-125
M-AWP-50-125_012

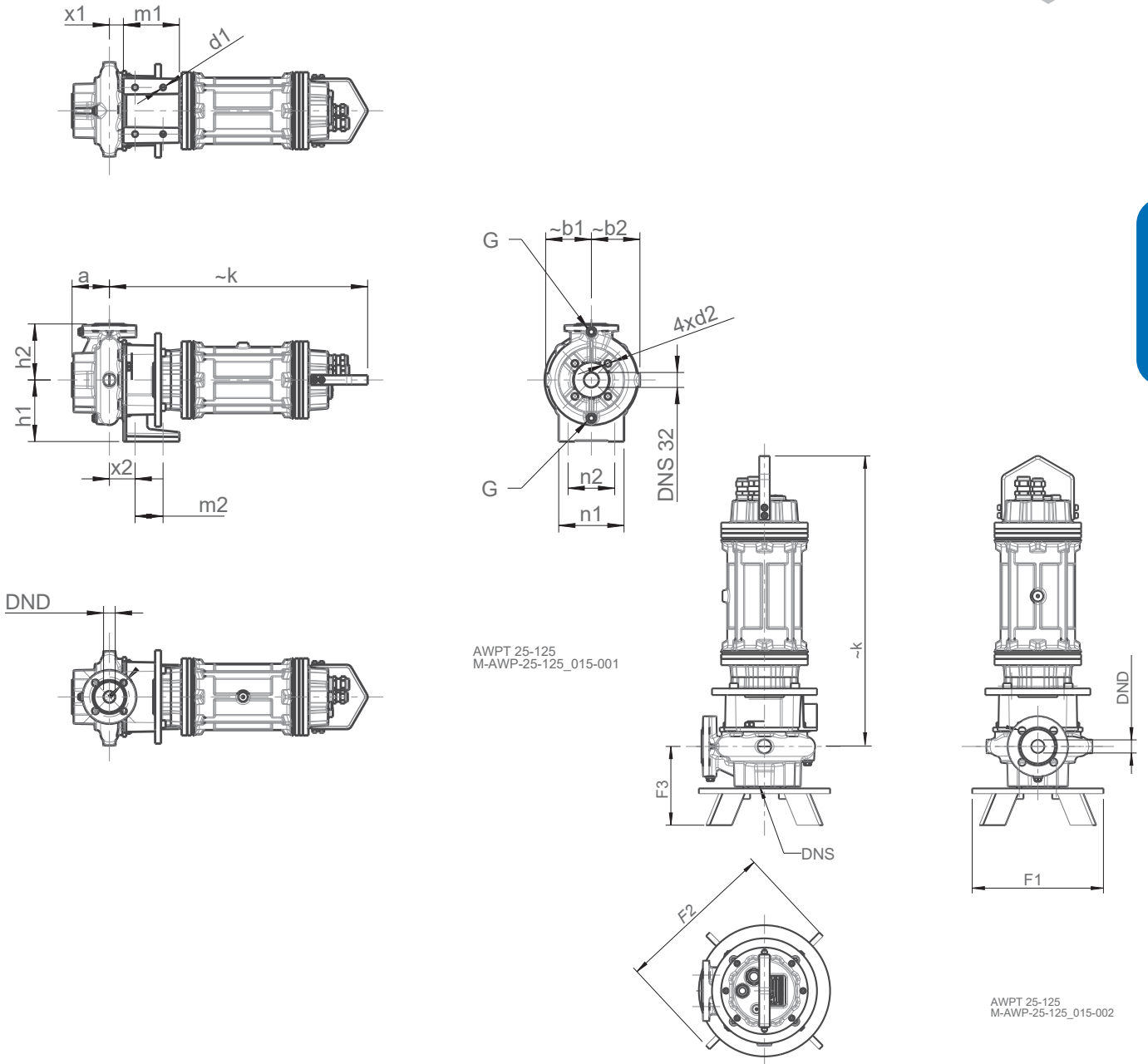
Type	Motor	DNS	DND	a	~b1	~b2	~b3	~b4	h1	h2	~k
AWPT-D 25-125	UWM 80	2"	22	110	146	100	95	121	253,5	43	505
	UWM 100										607

Dimensional drawings

AWPT



AWPT (-C) 25-125



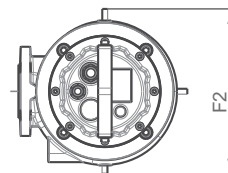
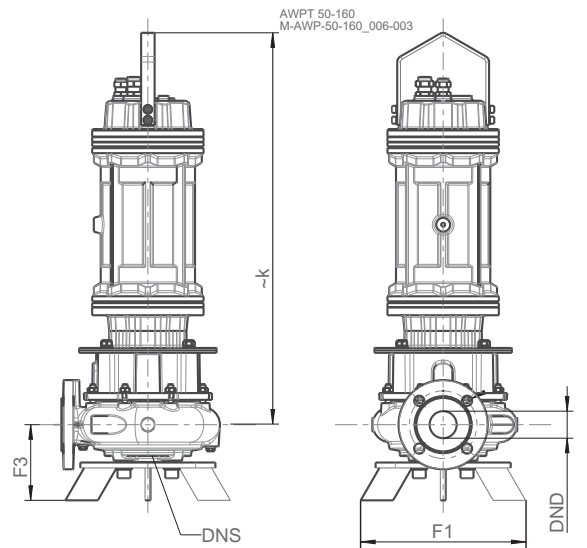
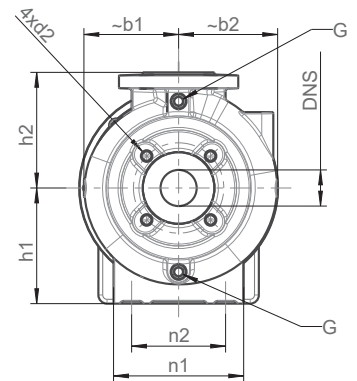
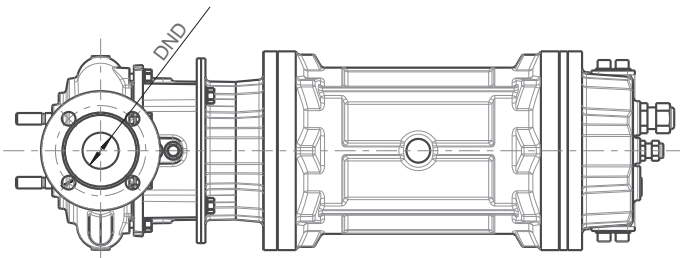
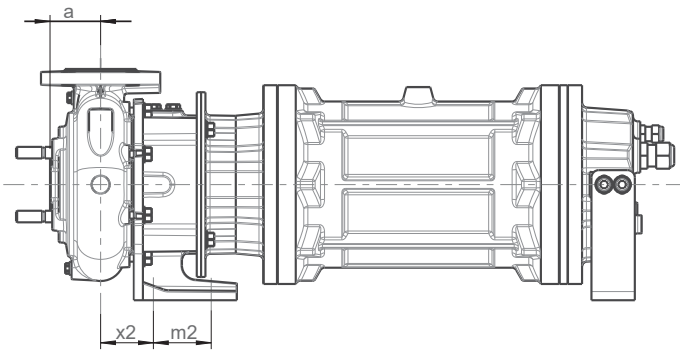
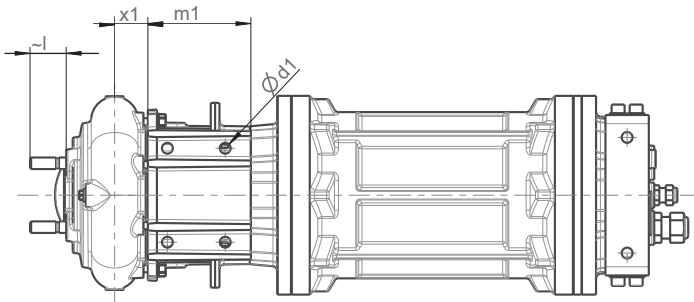
Dimensional drawings

AWPT

Type	Motor	DNS	DND	a	~b1	~b2	d1	d2	F1	F2	F3	G	h1	h2	~k	~l	m1	m2	n1	n2	x1	x2
AWPT 25-125	UWM 80	25	25	80	98	104	ø12	--	250	305	150	1/4"	132	120	505	--	120	60	140	100	30	55
	UWM 100																					

STROBL PUMPEN

AWPT (-C) 50-160



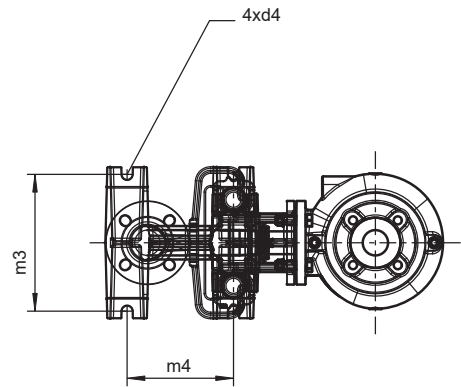
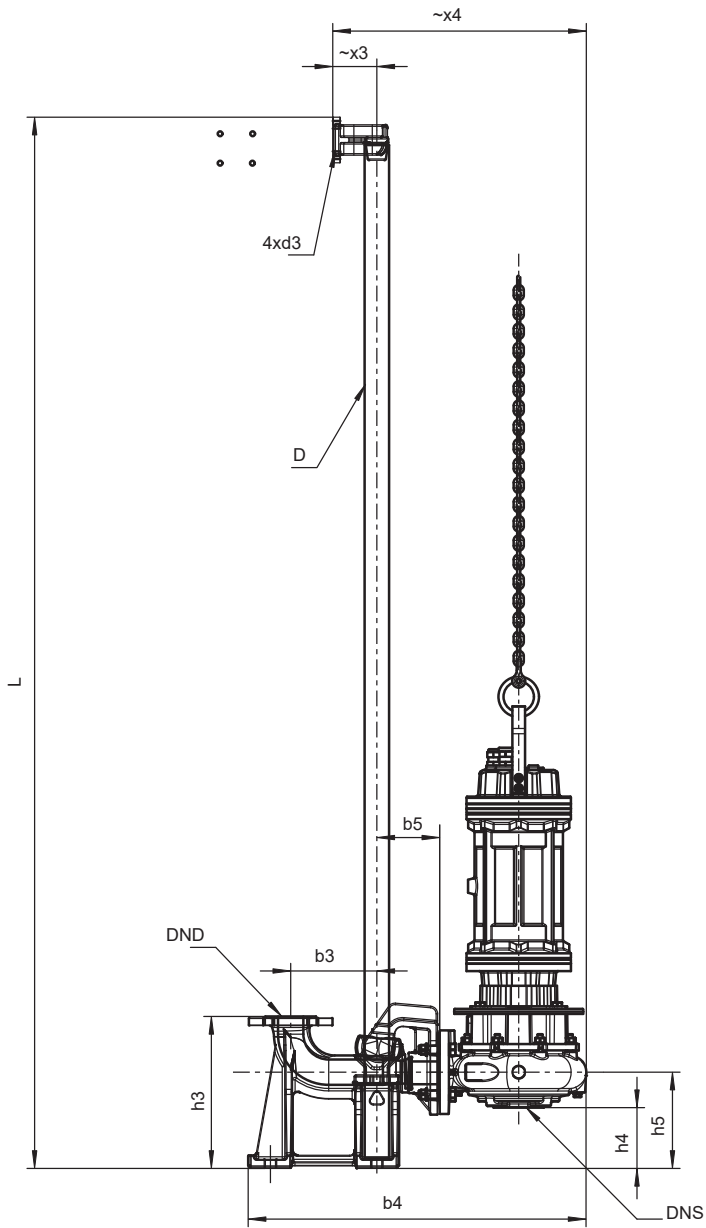
AWPT 50-160
M-AWP-50-160_006-005

Type	Motor	DNS	DND	a	~b1	~b2	b3	b4	b5	D	d1	d2	d3	d4
AWPT 50-160	UWM 80	50	50	70	131	137	170	667	124	1 1/2"	ø13	M16	M12	M16x30
	UMW 100													
	UWM 132													
	UWM 160													

Dimensional drawings

AWPT

Sewage water pumps
Series AWP/AWPH



AWPT 50-160
M-AWP-50-160_006-008

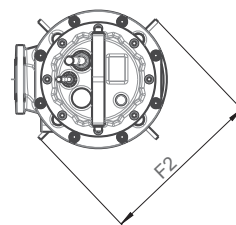
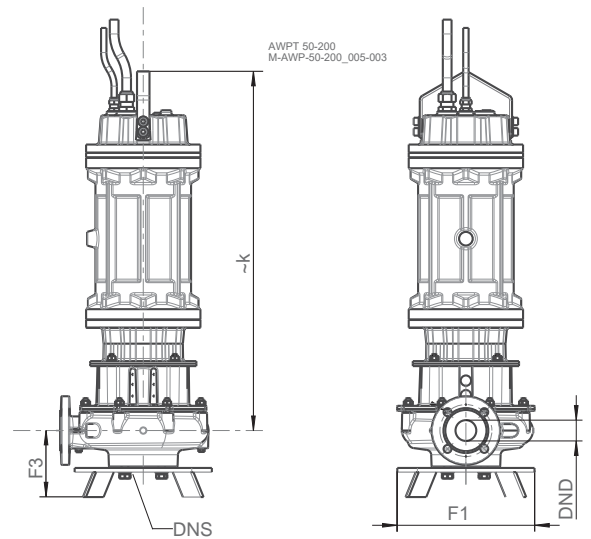
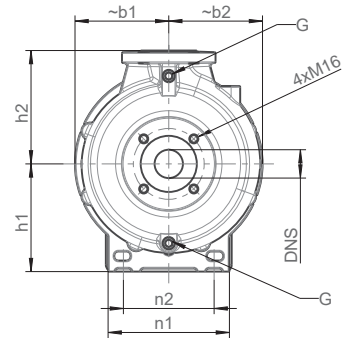
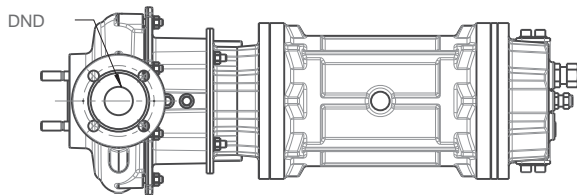
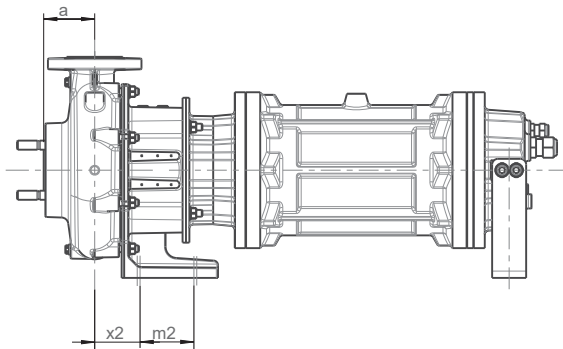
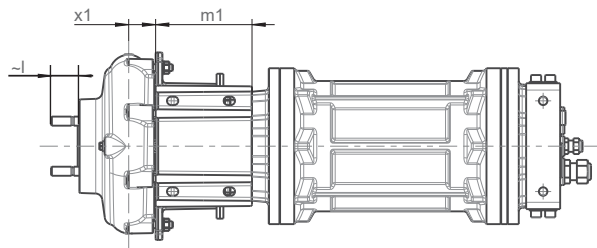
Dimensional drawings

F1	F2	F3	G	h1	h2	h3	h4	h5	~k	L	~l	m1	m2	m3	m4	n1	n2	x1	x2	x3	x4
313	305	140	1/4"	160	160	300	120	190	505	variable	50	142,5	80	270	210	180	130	46	55	87	500
									607												
									715												
									858												

AWPT

STROBL PUMPEN

AWPT (-C) 50-200



AWPT 50-200
Maßzeichnung AWPT-50-200

Type	Motor	DNS	DND	a	~b1	~b2	b3	b4	b5	D	d1	d2	d3	d4
AWPT 50-200	UWM 100	50	50	90	165	165	170	731	123	1 1/2"	ø15x20	M16	M12	M16x30
	UWM 132													
	UWM 160													

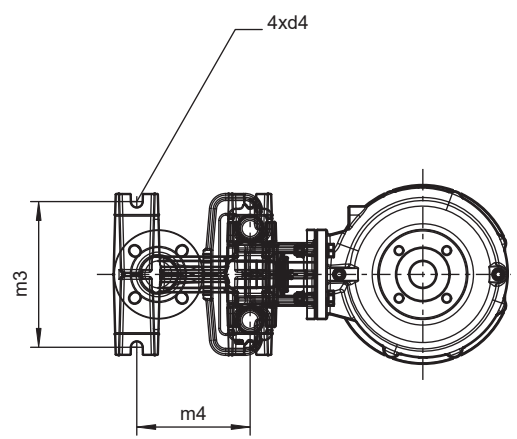
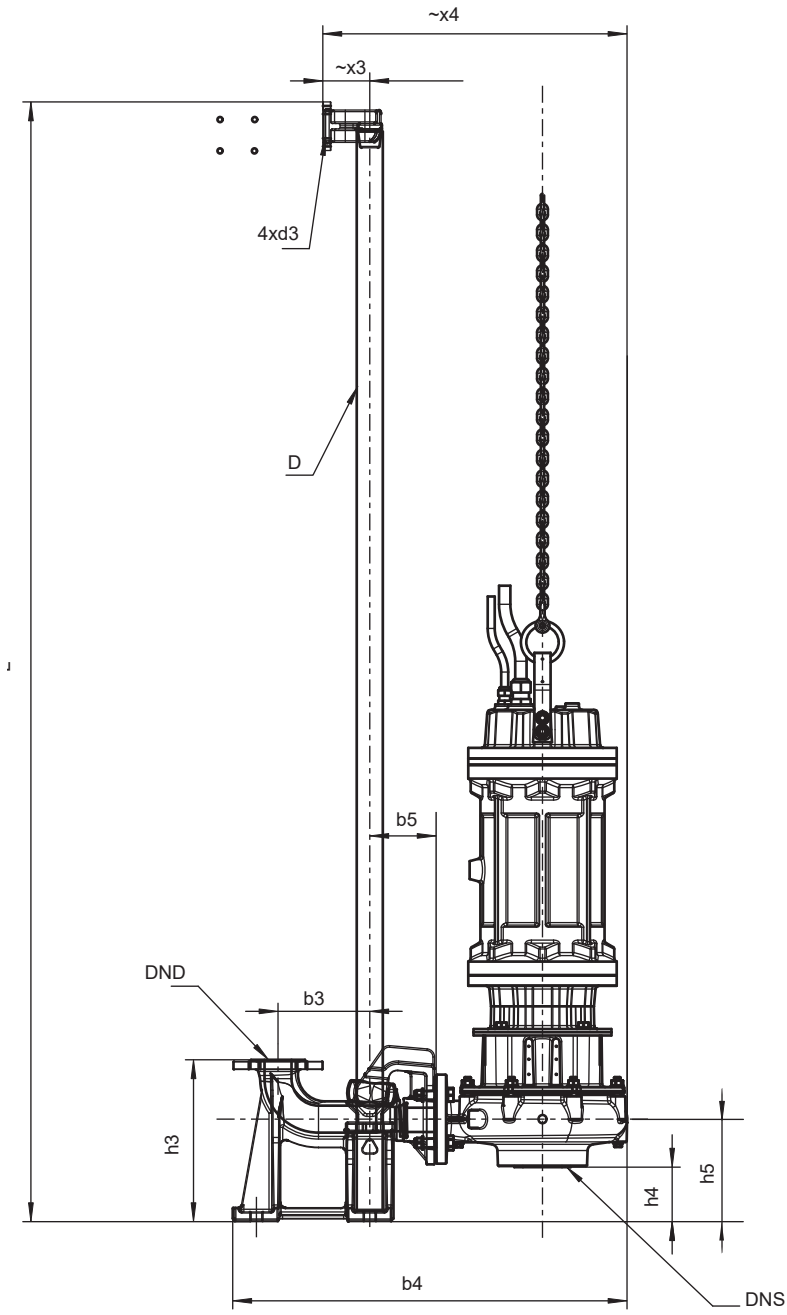
Dimensional drawings

AWPT

Sewage water pumps
Series AWP/AWPH



Dimensional drawings



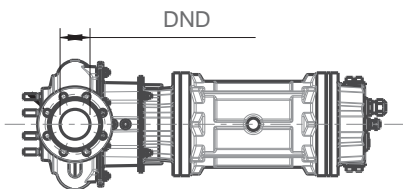
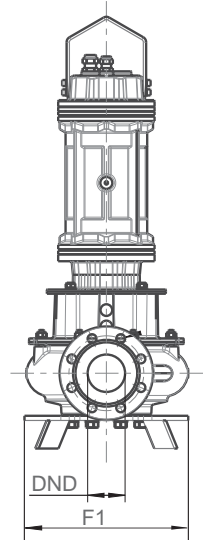
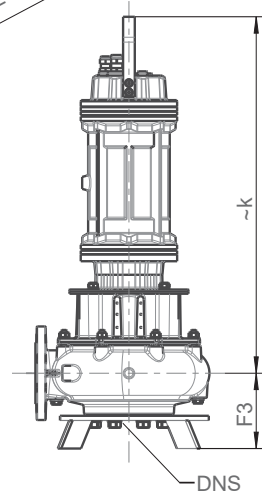
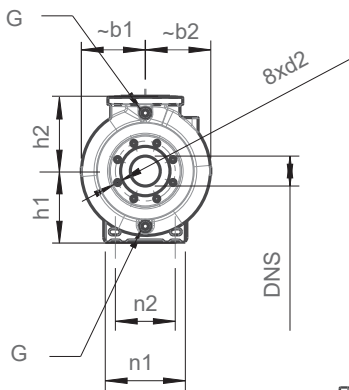
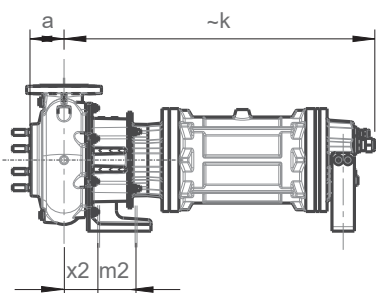
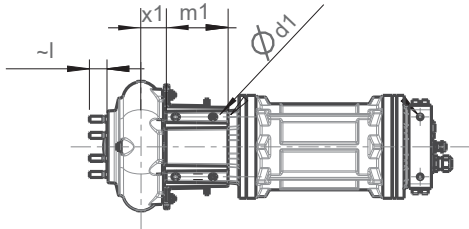
AWPT 50-200
M-AWP-50-200_005-006

AWPT

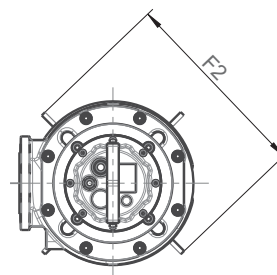
F1	F2	F3	G	h1	h2	h3	h4	h5	~k	L	~l	m1	m2	m3	m4	n1	n2	x1	x2	x3	x4
357	400	160	1/4"	190	200	300	101	190	607	variable	47	170	95	270	210	214	160	47,5	75	87	564
									715												
									858												

STROBL PUMPEN

AWPT (-C) 80-200



AWPT 80-200
M-AWP-80-200_011-002



AWPT 80-200
M-AWP-80-200_011-004

Type	Motor	DNS	DND	a	~b1	~b2	b3	b4	b5	D	d1	d2	d3	d4
AWPT 80-200	UWM 100	80	80	91	171	175	170	737	98	1 1/2"	Ø15x20	M18	M12	M16x30
	UWM 132													
	UWM 160													

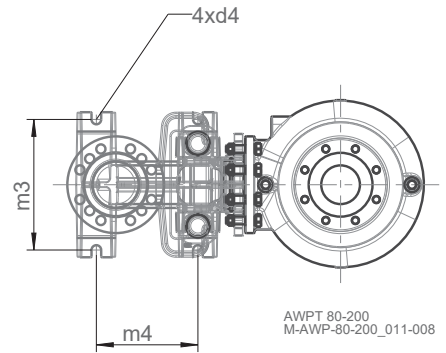
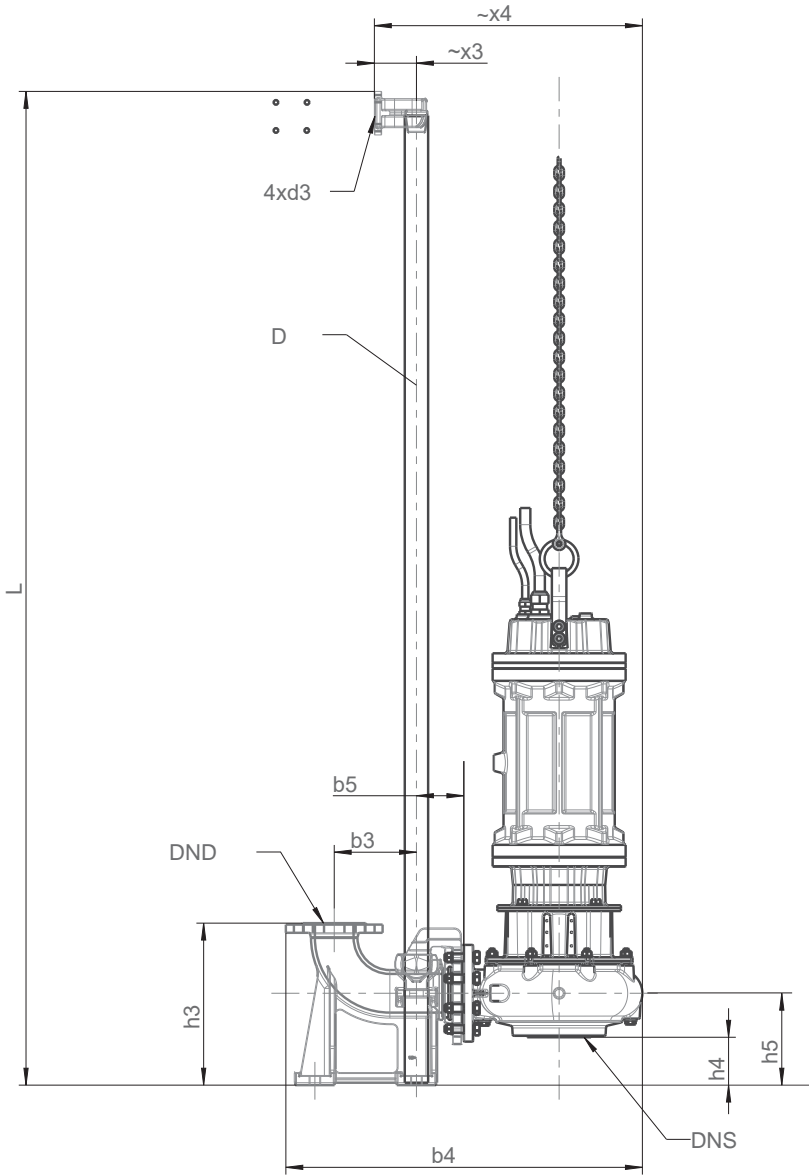
Dimensional
drawings

AWPT

Sewage water pumps
Series AWP/AWPH



Dimensional drawings



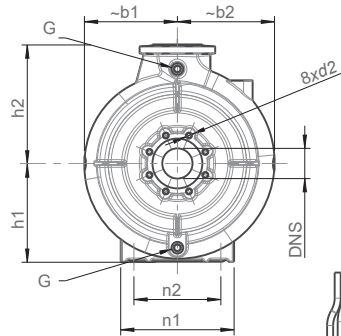
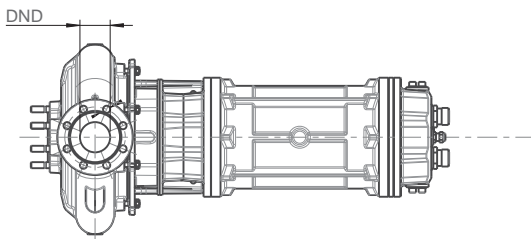
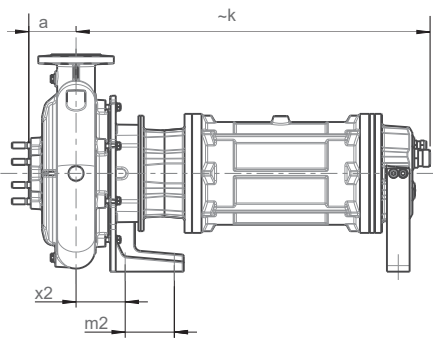
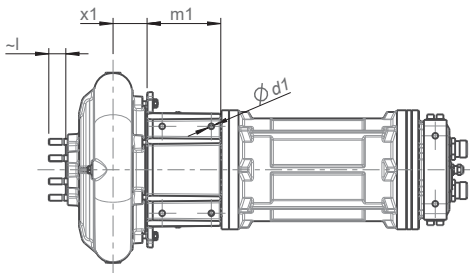
AWPT

F1	F2	F3	G	h1	h2	h3	h4	h5	~k	L	~l	m1	m2	m3	m4	n1	n2	x1	x2	x3	x4
372	420	161	1/2"	190	200	335	99	181	607	variable	47	170	100	270	210	214	160	62,5	90	87	554
									715												
									858												

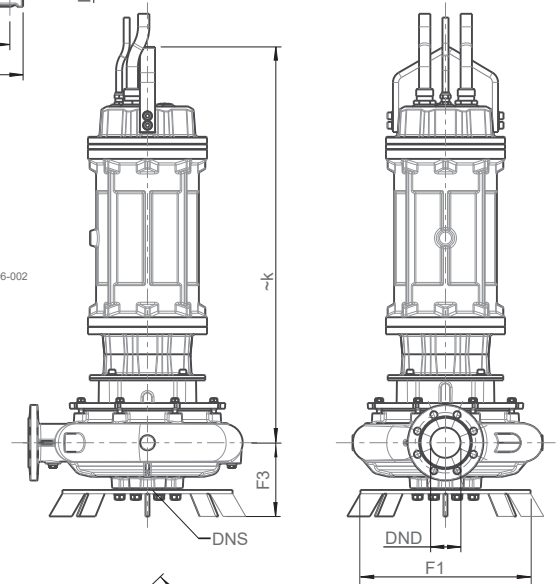
STROBL PUMPEN

AWPT (-C) 80-315

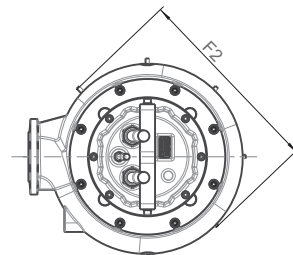
Dimensional drawings



AWPT 80-315
M-AWP-80-315_006-002



AWPT 80-315
M-AWP-80-315_006-004



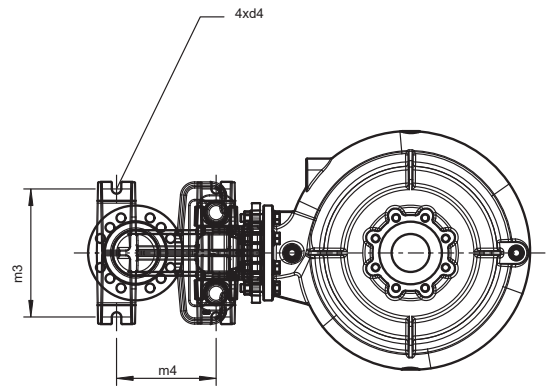
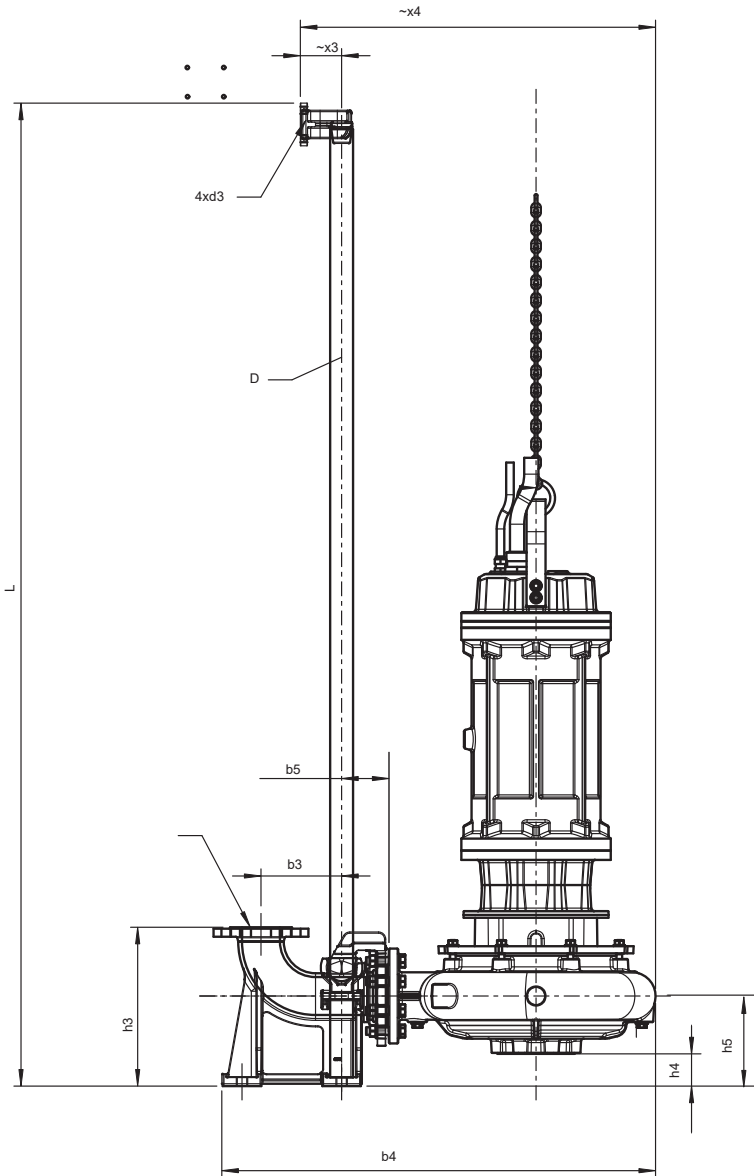
AWPT

Type	Motor	DNS	DND	a	~b1	~b2	b3	b4	b5	D	d1	d2	d3	d4
AWPT 80-315	UWM 100	80	80	90	246	257	170	915	100	1 1/2"	ø15	M16	M12	M16x30
	UWM 132													
	UWM 160													
	UWM 200													
	UWM 225													

Sewage water pumps
Series AWP/AWPH



Dimensional drawings



AWPT 80-315
M-AWP-80-315_006-006

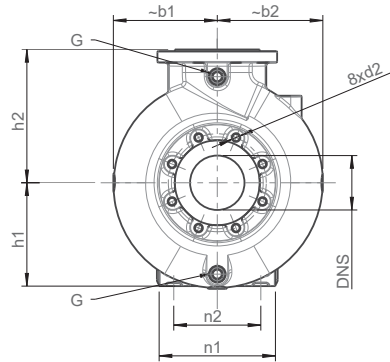
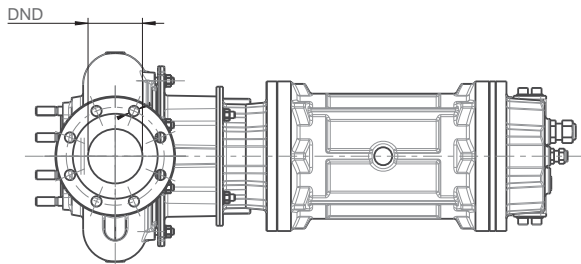
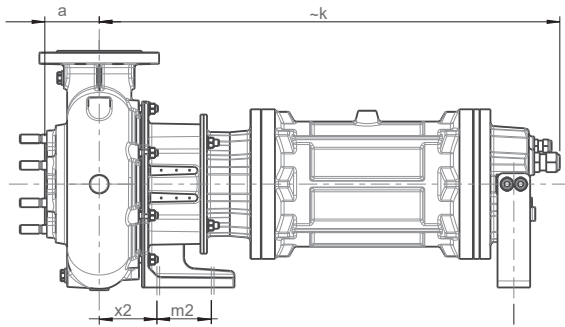
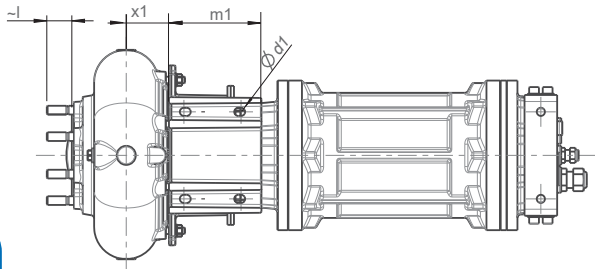
F1	F2	F3	G	h1	h2	h3	h4	h5	~k	L	~l	m1	m2	m3	m4	n1	n2	x1	x2	x3	x4
567	520	165	1/2"	260	315	335	65	190	607	variable	45	195	130	270	210	300	230	90	130	87	749
									715												
									858												
									1110												
									1219												

AWPT

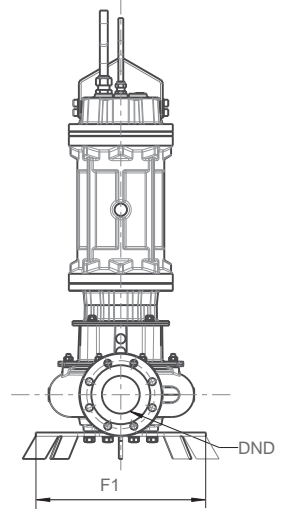
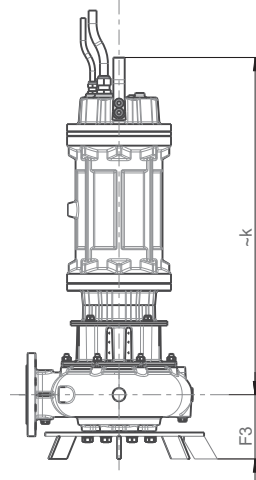
STROBL PUMPEN

AWPT (-C) 100-200

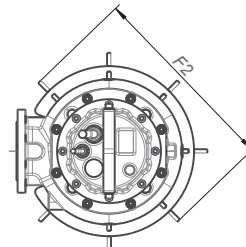
Dimensional drawings



AWPT 100-200
M-AWP-100-200_011-002



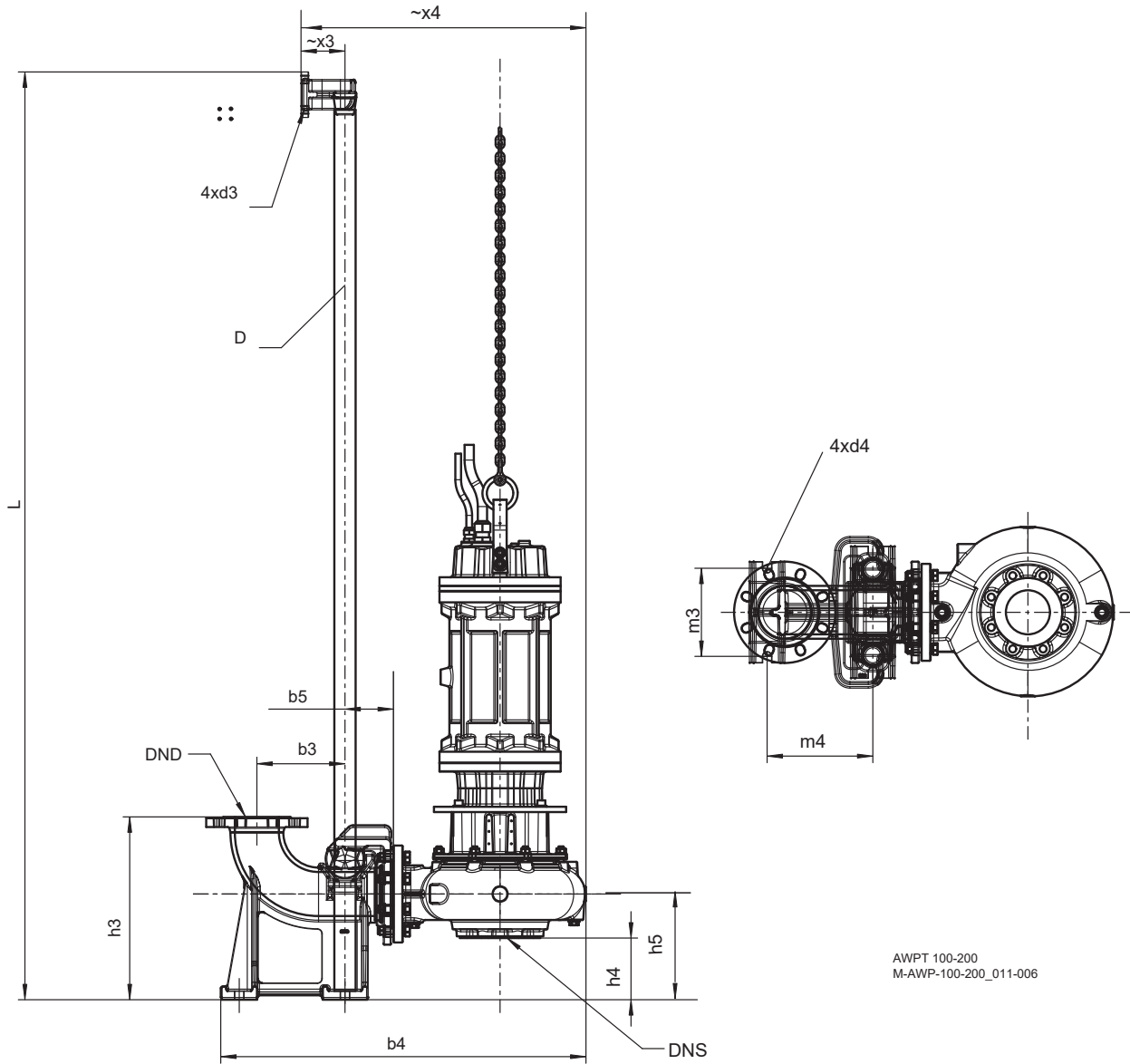
AWPT 100-200
M-AWP-100-200_011-003



Type	Motor	DNS	DND	a	~b1	~b2	b3	b4	b5	D	d1	d2	d3	d4
AWPT 100-200	UWM 100	100	100	100	191	194	200	829	110	1 1/2"	Ø15	M16	M12	M16x30
	UWM 132													
	UWM 160													

AWPT

Sewage water pumps
Series AWP/AWPH



AWPT 100-200
M-AWP-100-200_011-006

Dimensional drawings

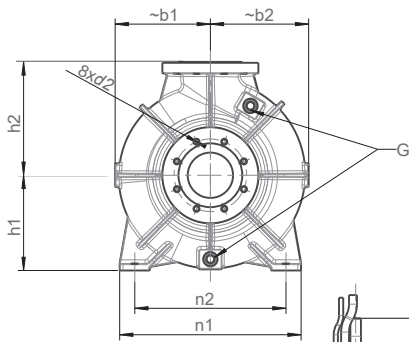
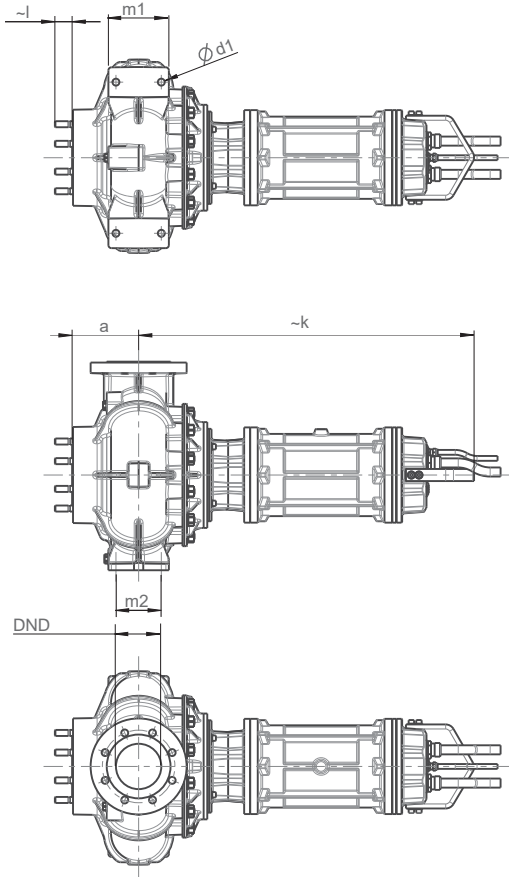
AWPT

F1	F2	F3	G	h1	h2	h3	h4	h5	~k	L	~l	m1	m2	m3	m4	n1	n2	x1	x2	x3	x4
440	520	170	1/2"	190	245	415	140	240	607	variable	46	170	100	200	240	214	160	78,5	106	87	634
									715												
									858												

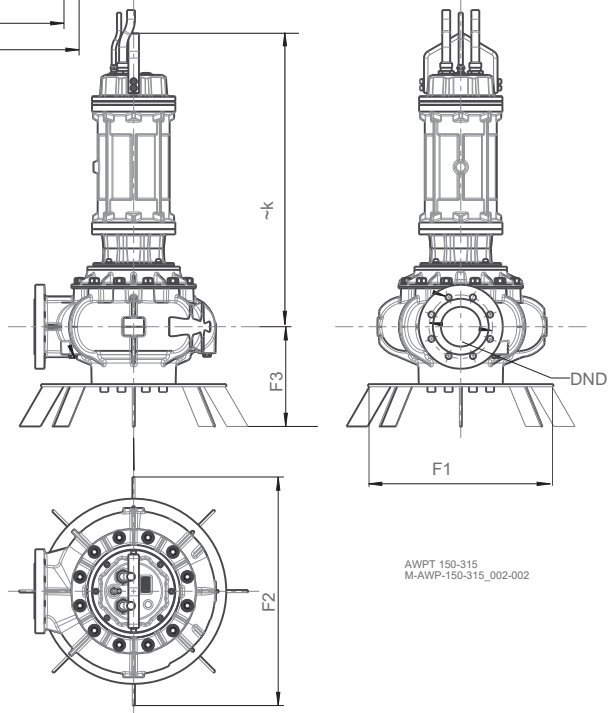
STROBL PUMPEN

AWPHT (-C) 150-315

Dimensional drawings



AWPT 150-315
M-AWP-150-315_002-001



AWPT 150-315
M-AWP-150-315_002-002

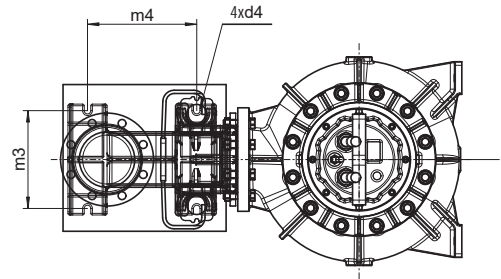
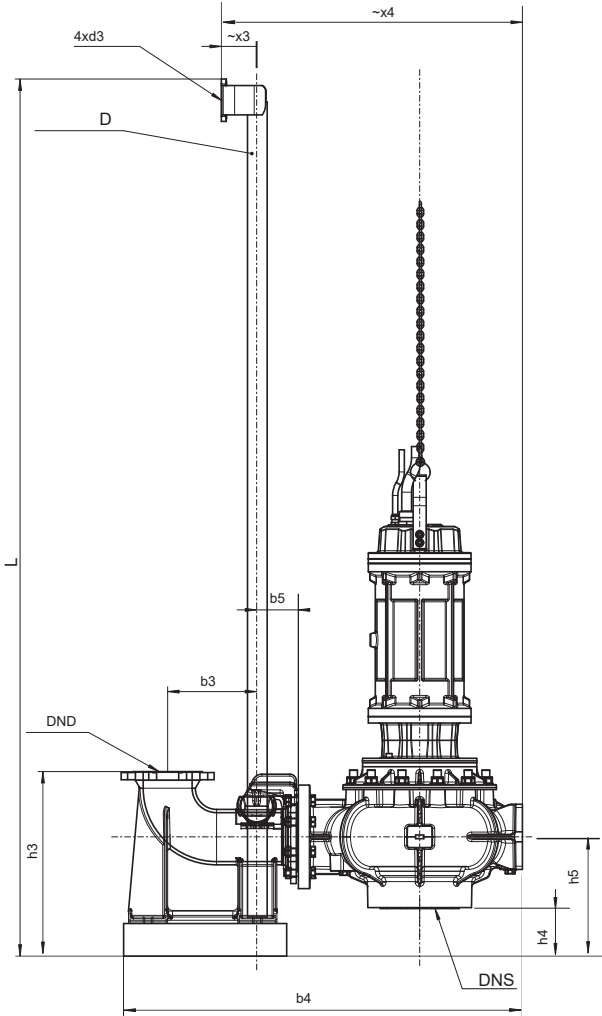
AWPT

Type	Motor	DNS	DND	a	~b1	~b2	b3	b4	b5	D	d1	d2	d3	d4
AWPHT 150-315	UWM 100	150	150	220	315	325	273	1230	128	2"	ø23	M20	M12	M16x30
	UWM 132													
	UWM 160													

Sewage water pumps
Series AWP/AWPH



Dimensional drawings



AWPT 150-315
M-AWP-150-315_002-003

F1	F2	F3	G	h1	h2	h3	h4	h5	~k	L	~l	m1	m2	m3	m4	n1	n2	x1	x2	x3	x4
694	864	377	1"	315	375	415	140	366	607	variable	60	150	200	300	335	300	335	600	500	180	995
									715												
									858												

AWPT

STROBL PUMPEN

Examples for special versions



AWPVS 50-160

Submersible sewage pump with mounting plate, bearing housing, lantern, coupling, and discharge pipe.

The SiC slide bearings in the intermediate pipe are liquid-lubricated.

The design of the mounting plate and its installation depth could be customized according to the system's requirements.



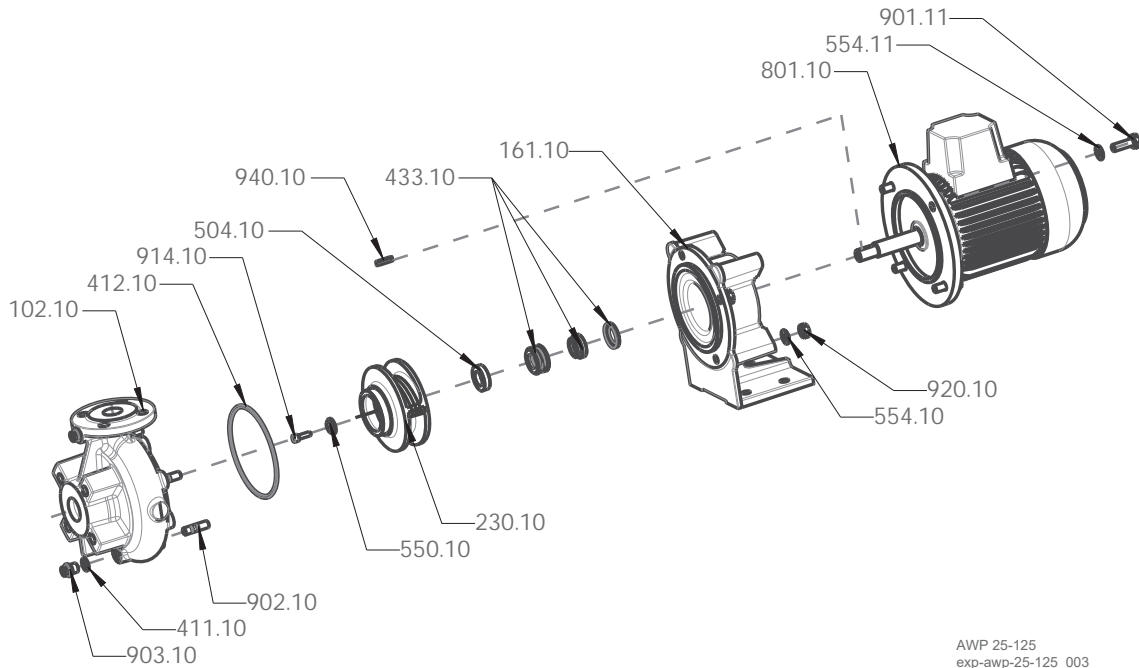
AWPHVL

Sewage water pump with oil lubricated bearing in modified inline design
Mounted to drip tray with backpull-out- frame and integrated fluid barrier system

STROBL PUMPEN

Exploded views

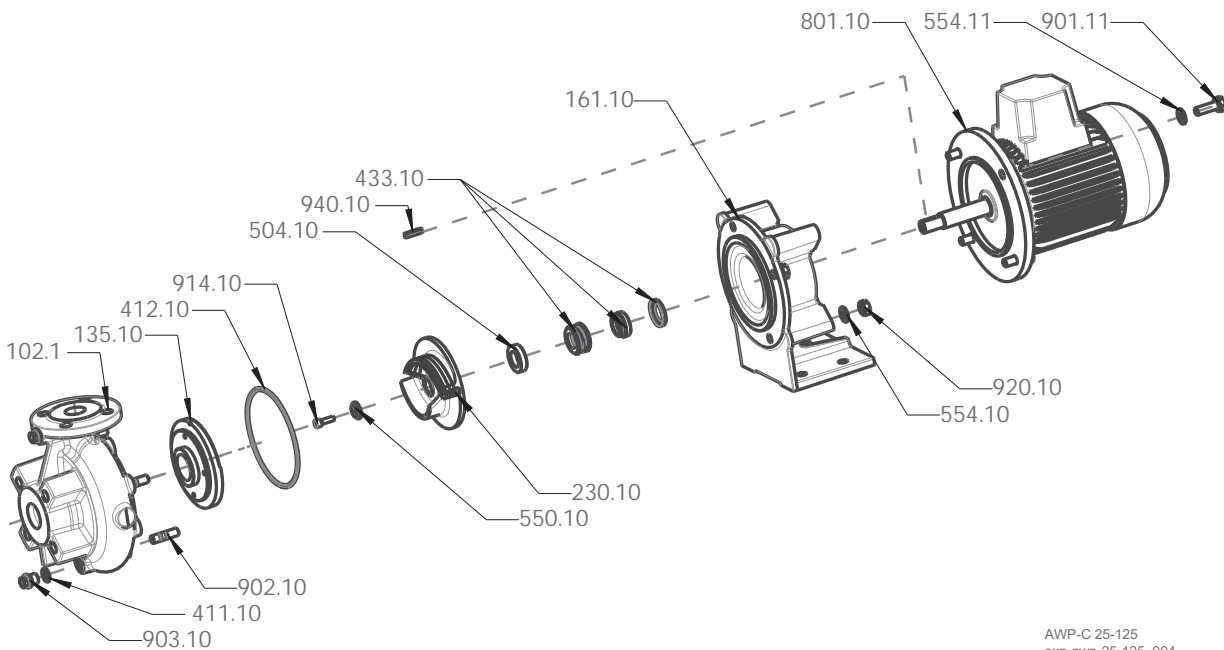
AWP 25-125



AWP 25-125
exp-awp-25-125_003

Exploded
Views

AWP-C 25-125

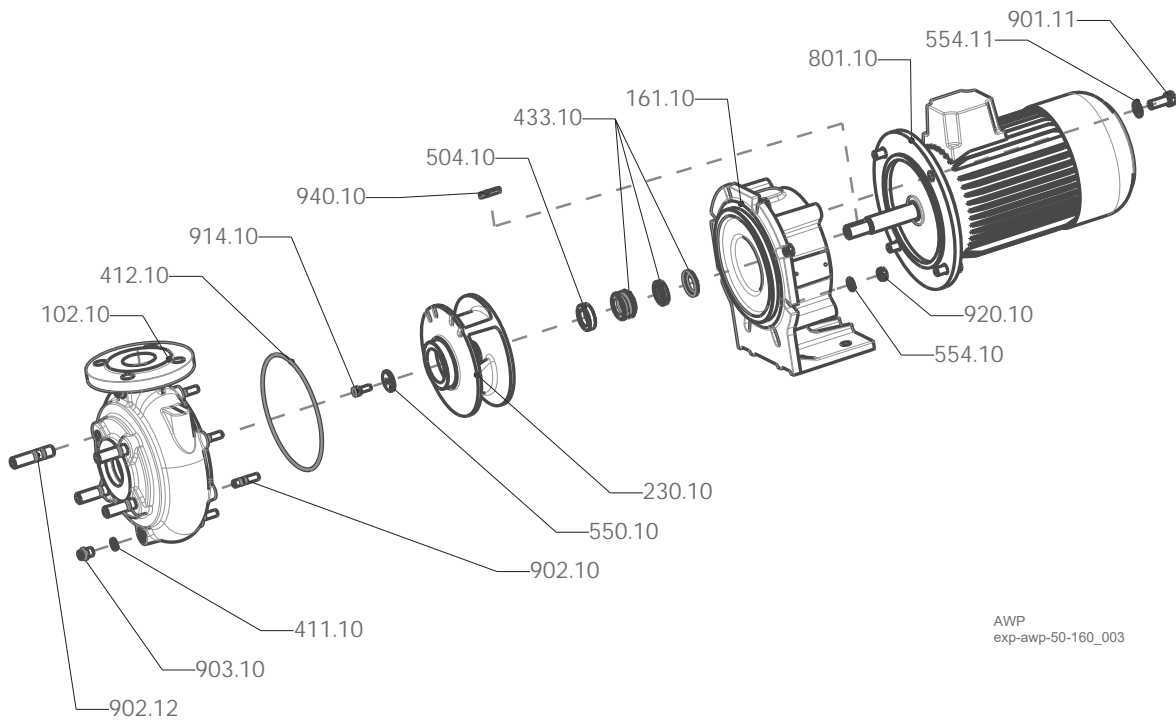


AWP-C 25-125
exp-awp-25-125_004

Sewage water pumps
Series AWP/AWPH

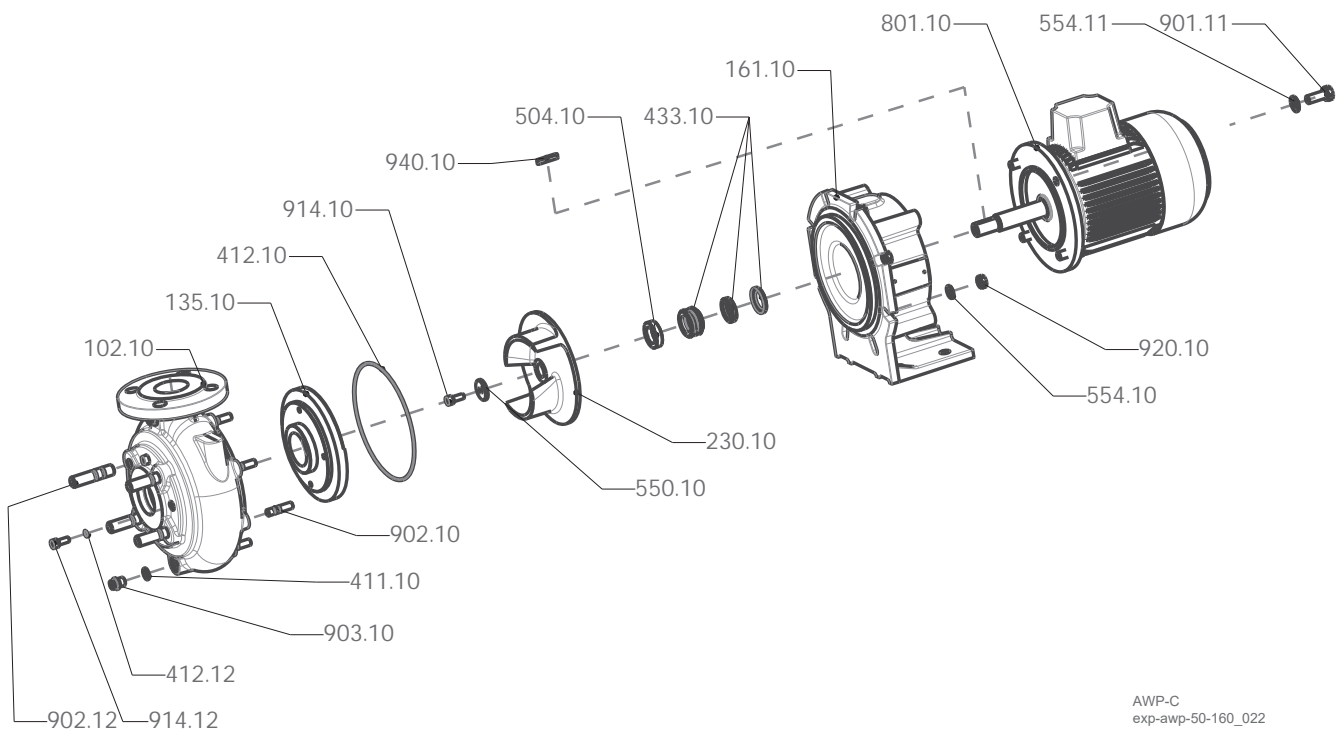


AWP 50-160, 50-200, 80-200, 80-315, 100-200



AWP
exp-awp-50-160_003

AWP-C 50-160, 50-200, 80-200, 80-315, 100-200

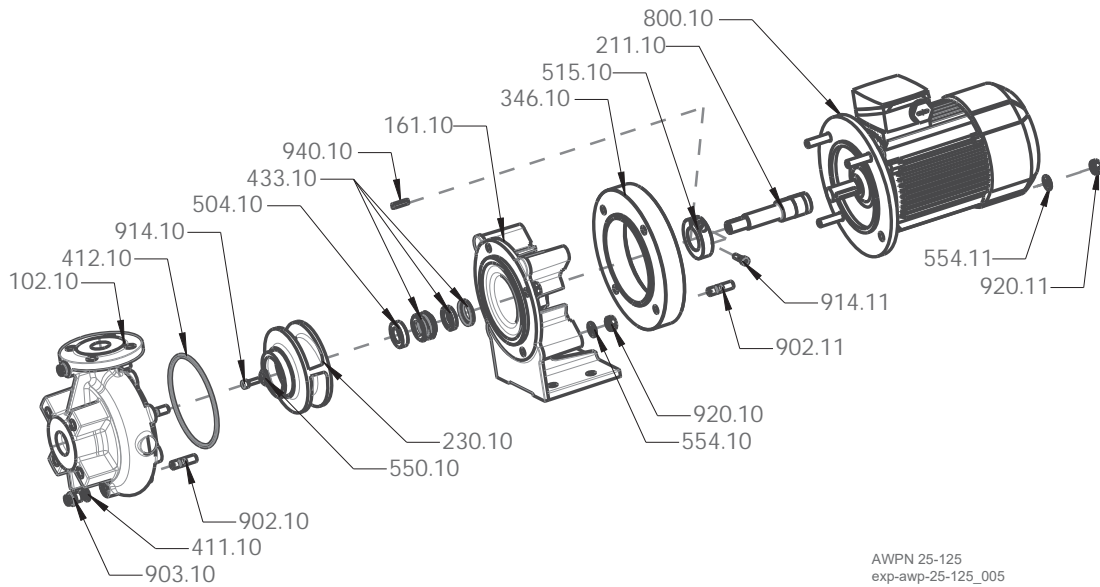


AWP-C
exp-awp-50-160_022

Exploded Views

STROBL PUMPEN

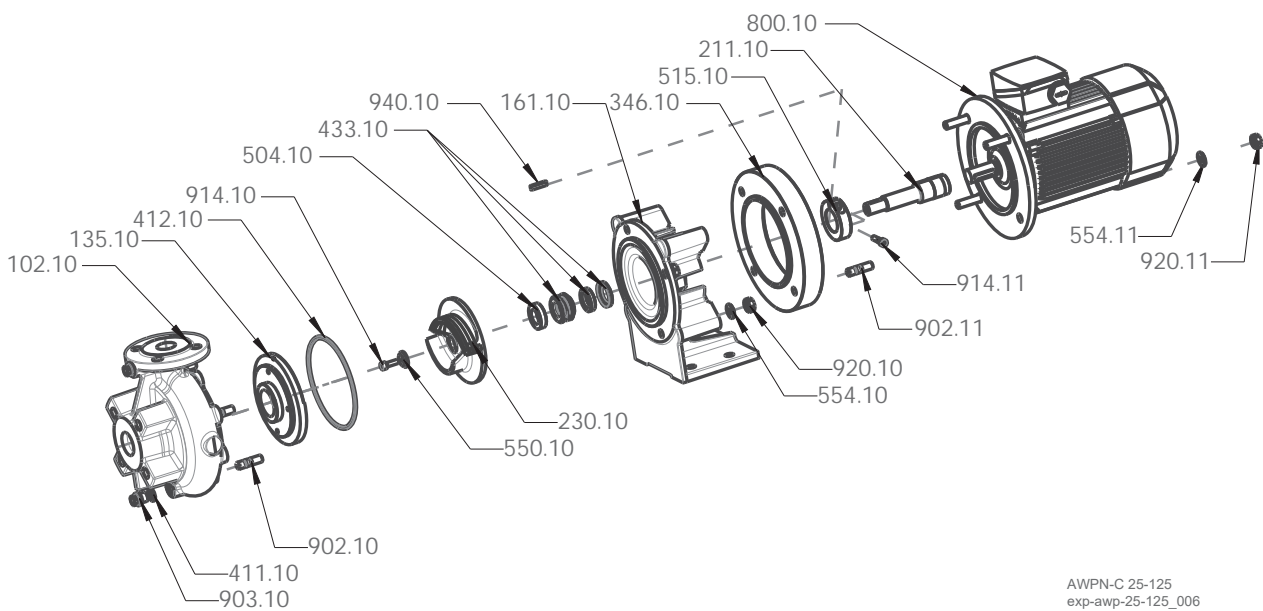
AWPN 25-125



AWPN 25-125
exp-awp-25-125_005

Exploded
Views

AWPN (-C) 25-125



AWPN-C 25-125
exp-awp-25-125_006

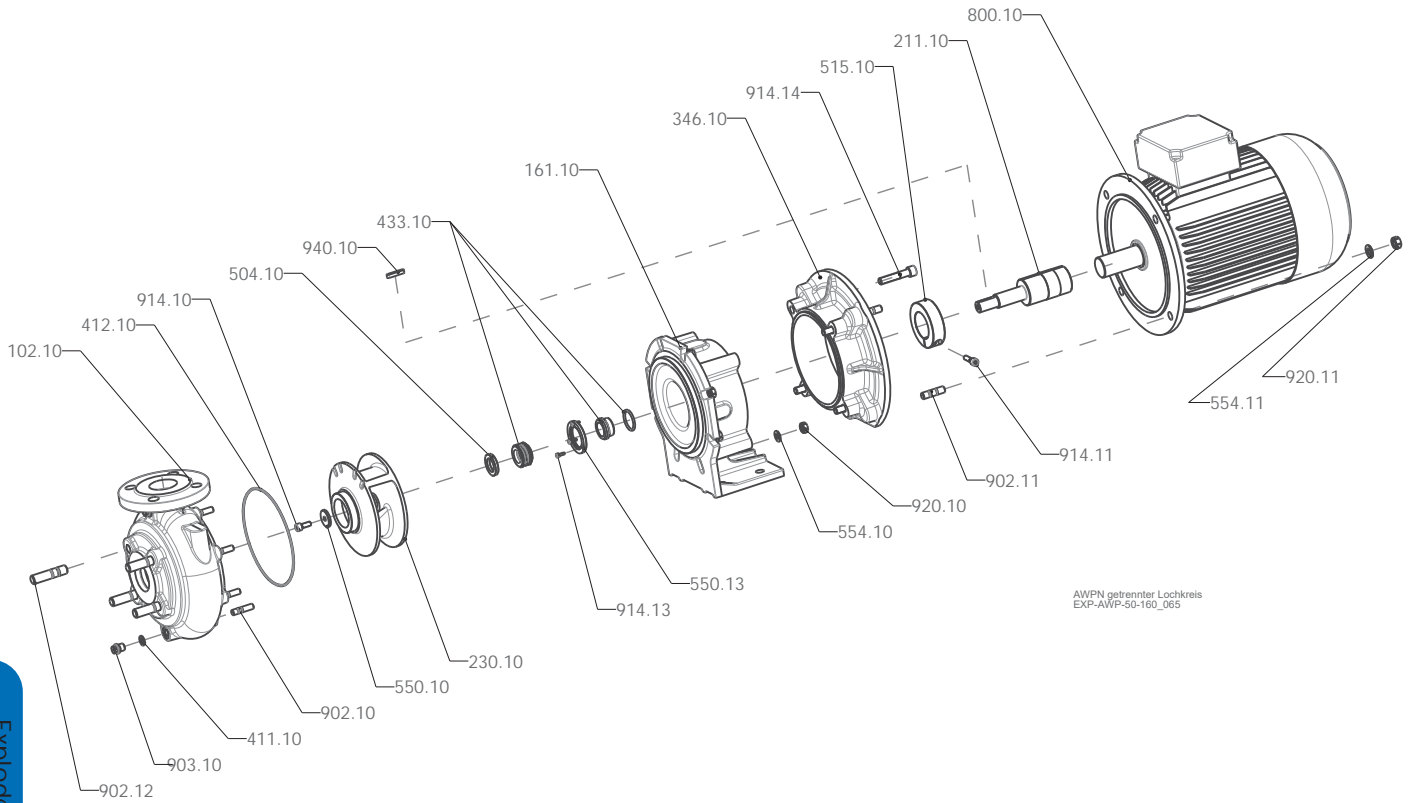
Sewage water pumps
Series AWP/AWPH



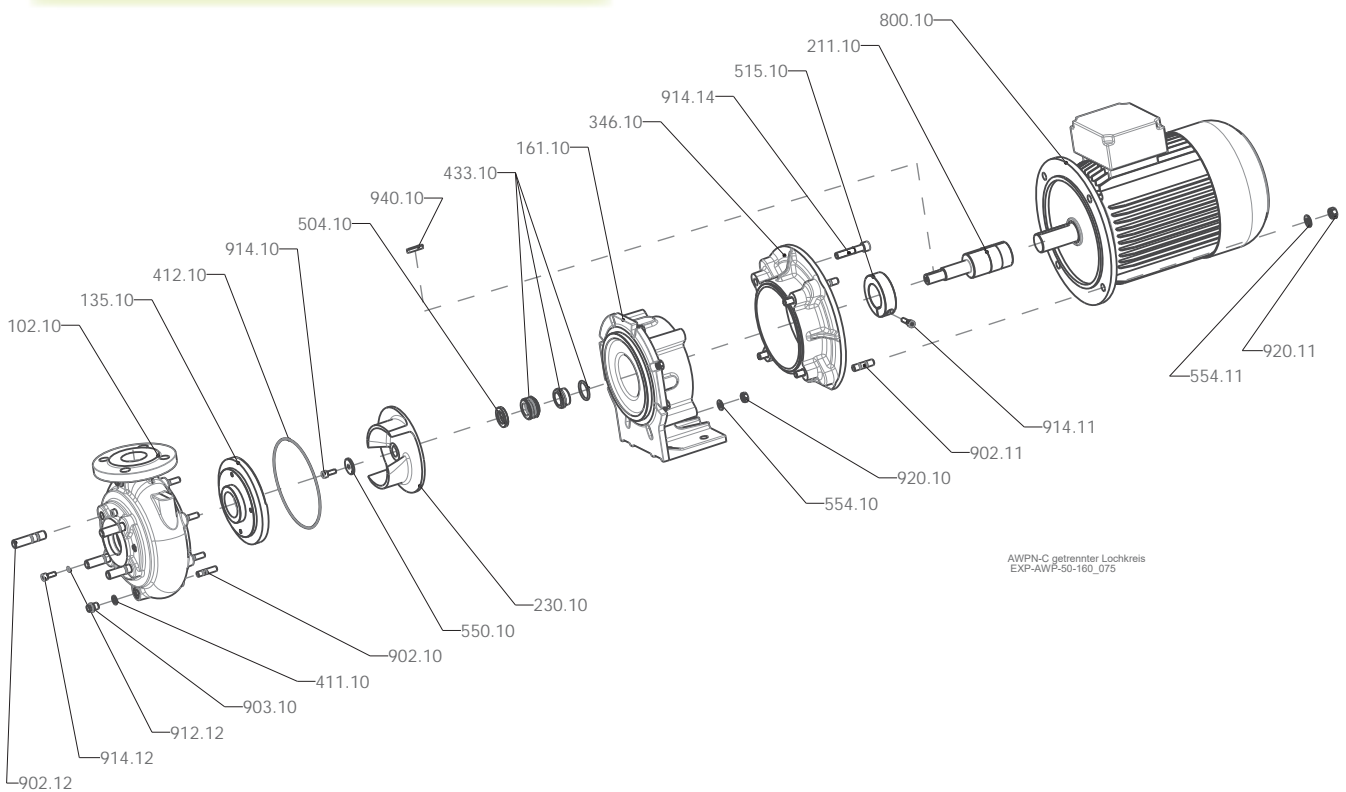
Exploded
Views

STROBL PUMPEN

AWPN 50-160, 50-200, 80-200, 80-315, 100-200 (separate bolt circle)



AWPN (-C) 50-160, 50-200, 80-200, 80-315, 100-200 (separate bolt circle)

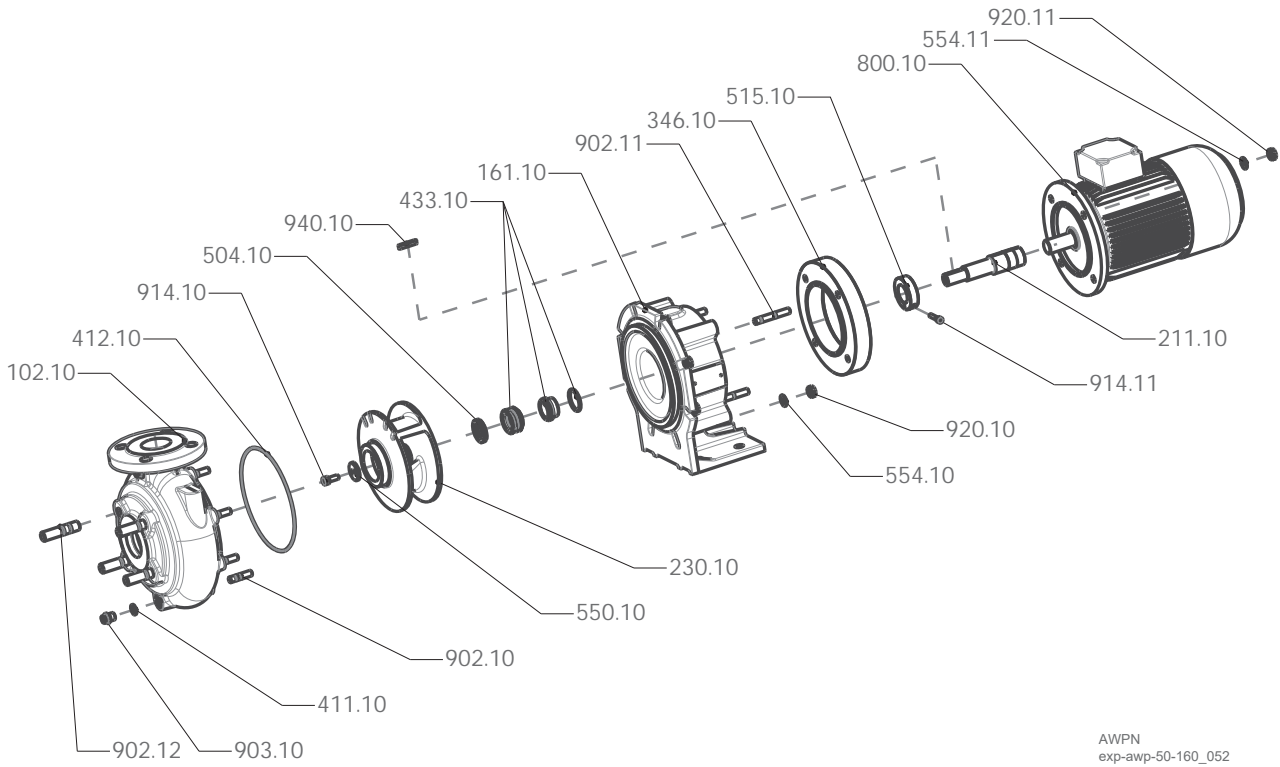


Exploded
Views

Sewage water pumps
Series AWP/AWPH

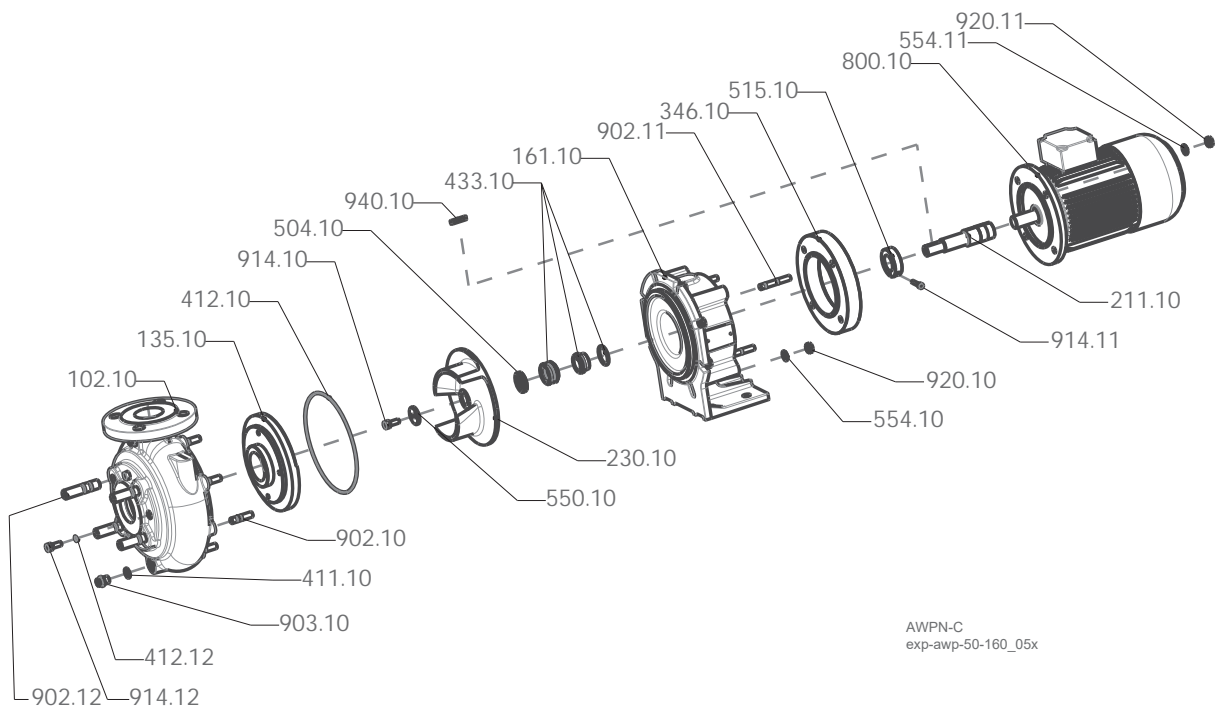


AWPN 50-160, 50-200, 80-200, 80-315, 100-200 (same bolt circle)



AWPN
exp-awp-50-160_052

AWPN (-C) 50-160, 50-200, 80-200, 80-315, 100-200 (same bolt circle)

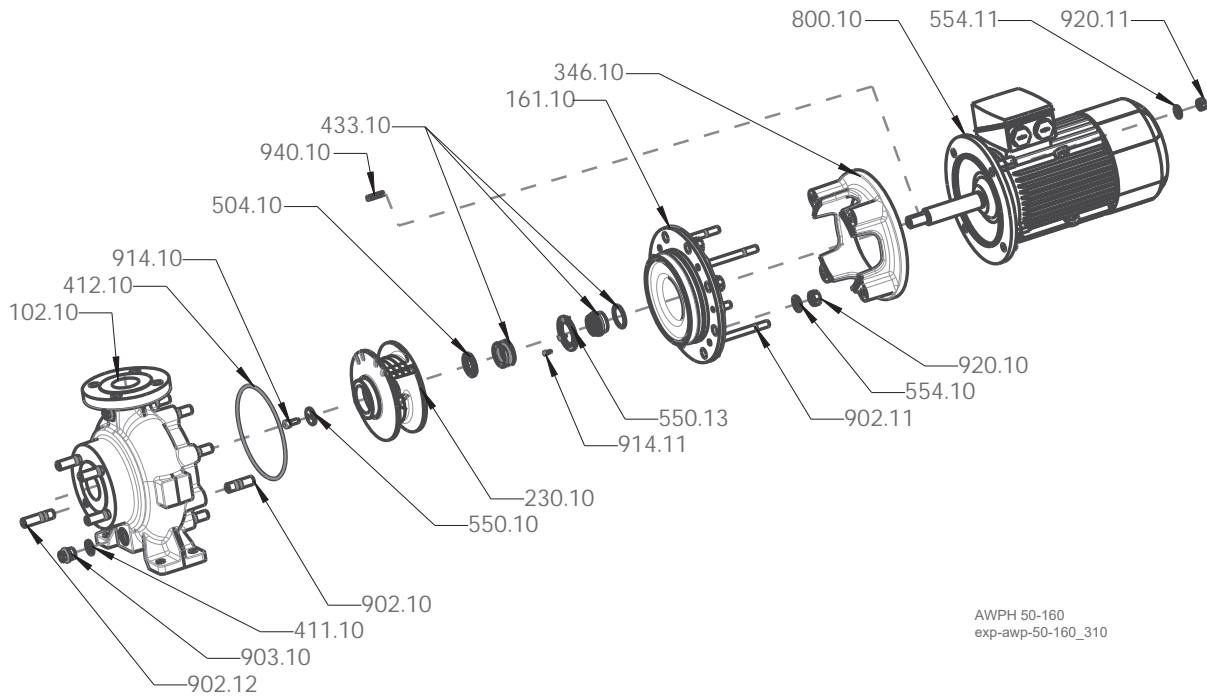


AWPN-C
exp-awp-50-160_05x

Exploded
Views

STROBL PUMPEN

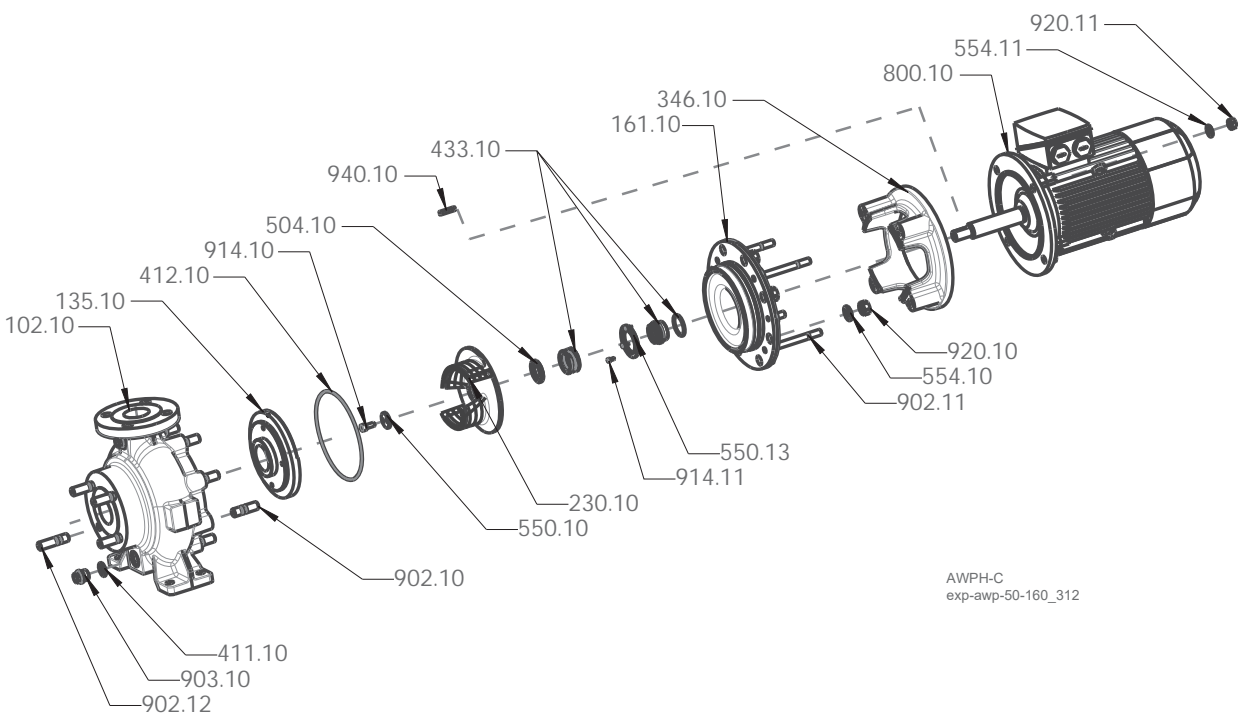
AWPH 50-160, 50-200, 80-200, 150-315



AWPH 50-160
exp-awp-50-160_310

Exploded
Views

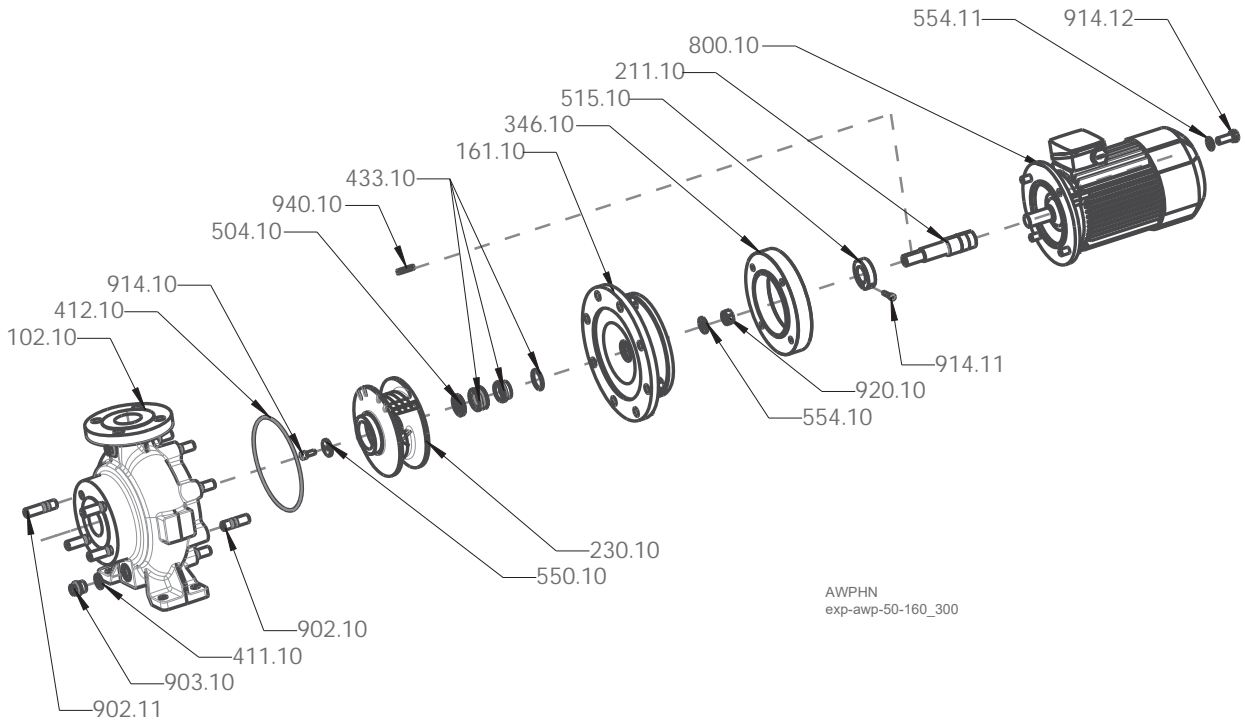
AWPH (-C) 50-160, 50-200, 80-200, 150-315



AWPH-C
exp-awp-50-160_312

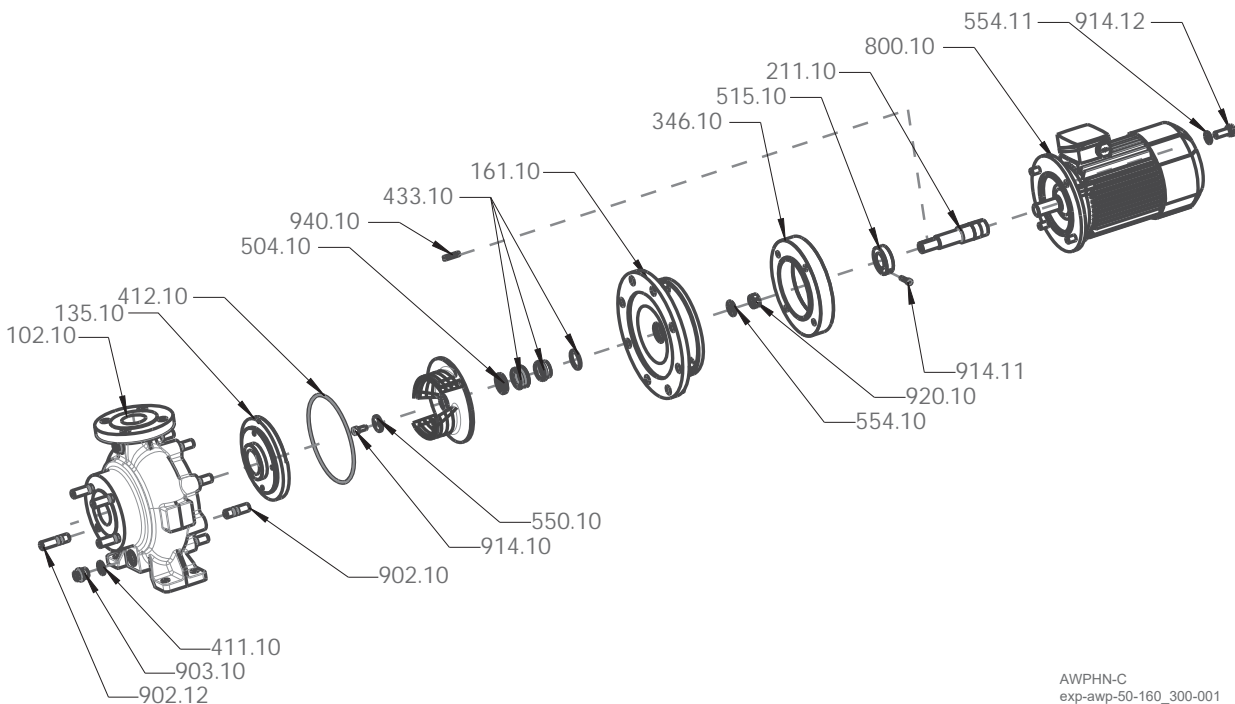


AWPHN 50-160, 50-200, 80-200, 150-315



AWPHN
exp-awp-50-160_300

AWPHN (-C) 50-160, 50-200, 80-200, 150-315

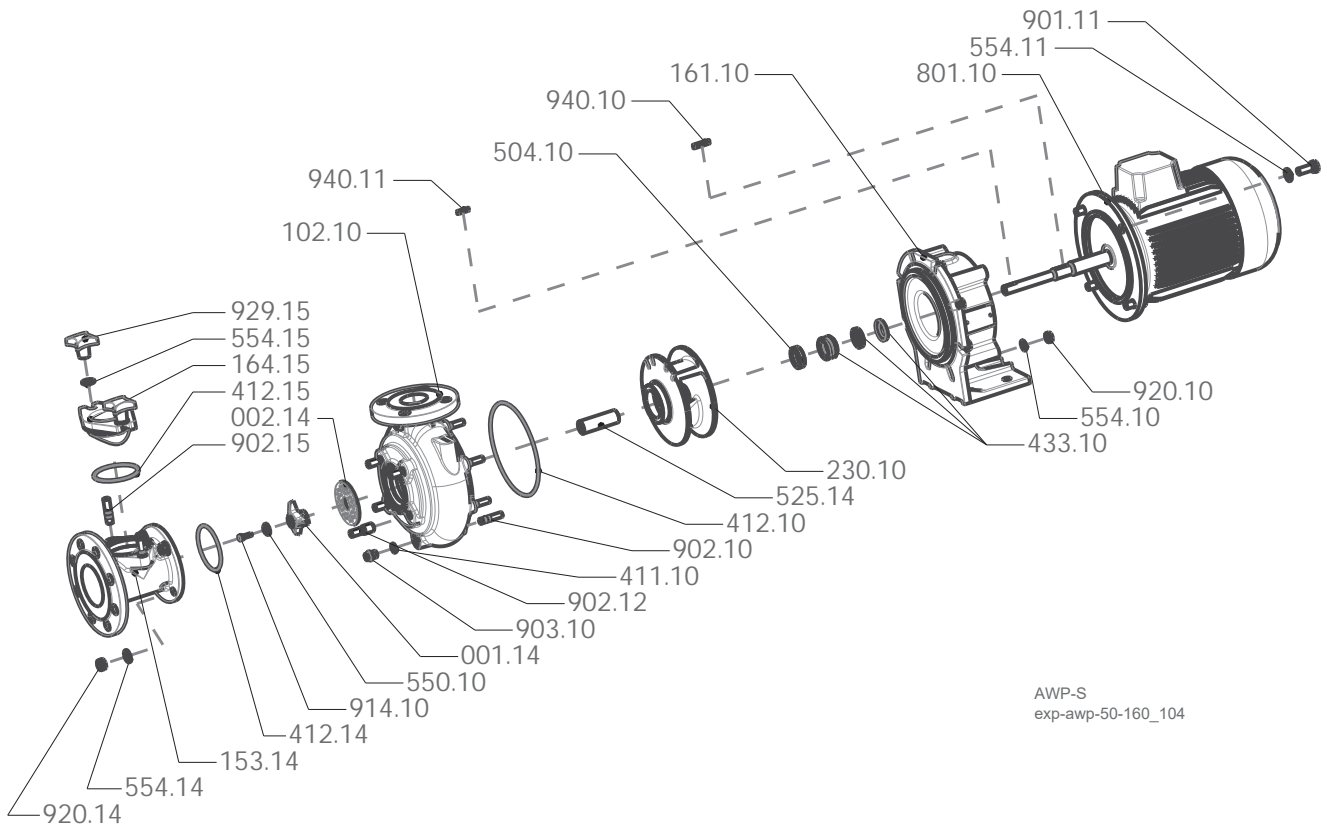


AWPHN-C
exp-awp-50-160_300-001

Exploded Views

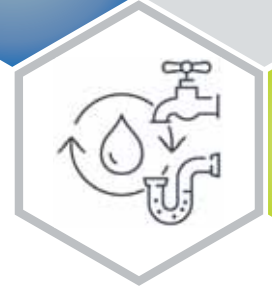
STROBL PUMPEN

AWP-S 25-125, 50-160



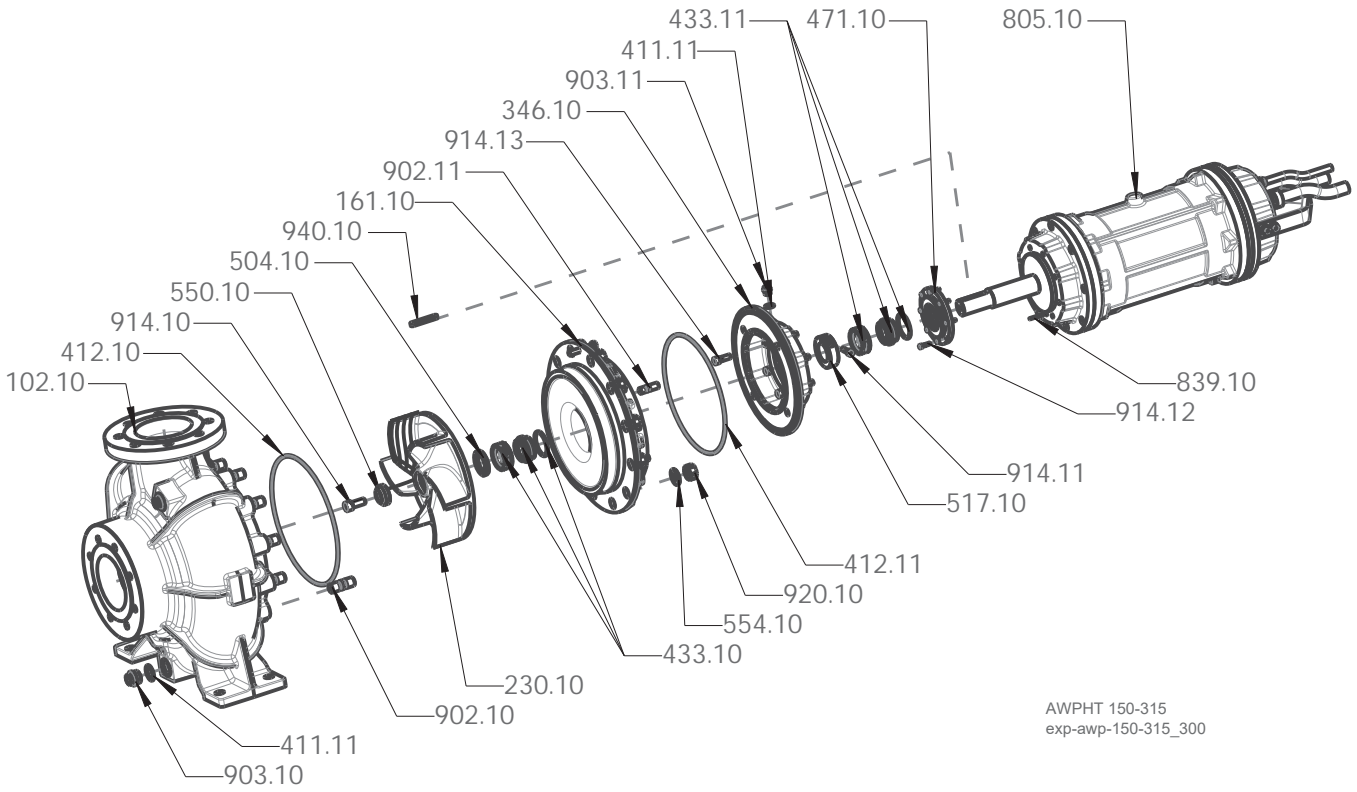
Exploded
Views

Sewage water pumps
Series AWP/AWPH



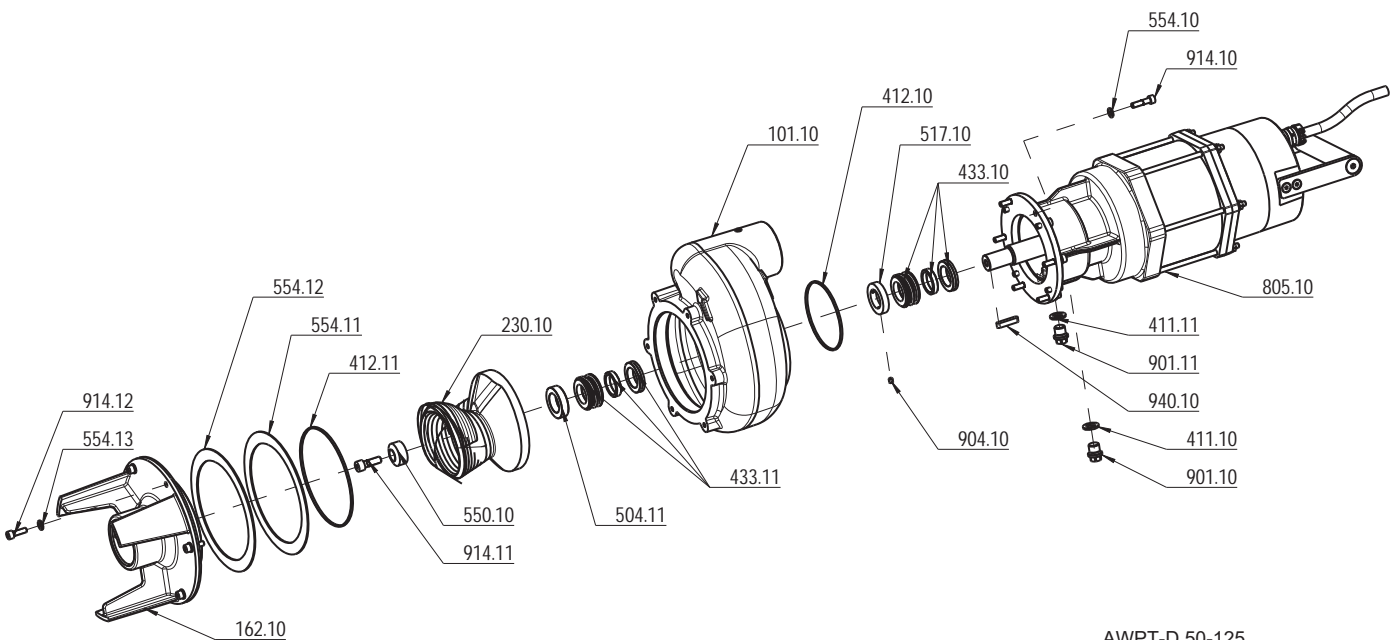


AWPHT 150-315



AWPHT 150-315
exp-awp-150-315_300

AWPT-D 50-125

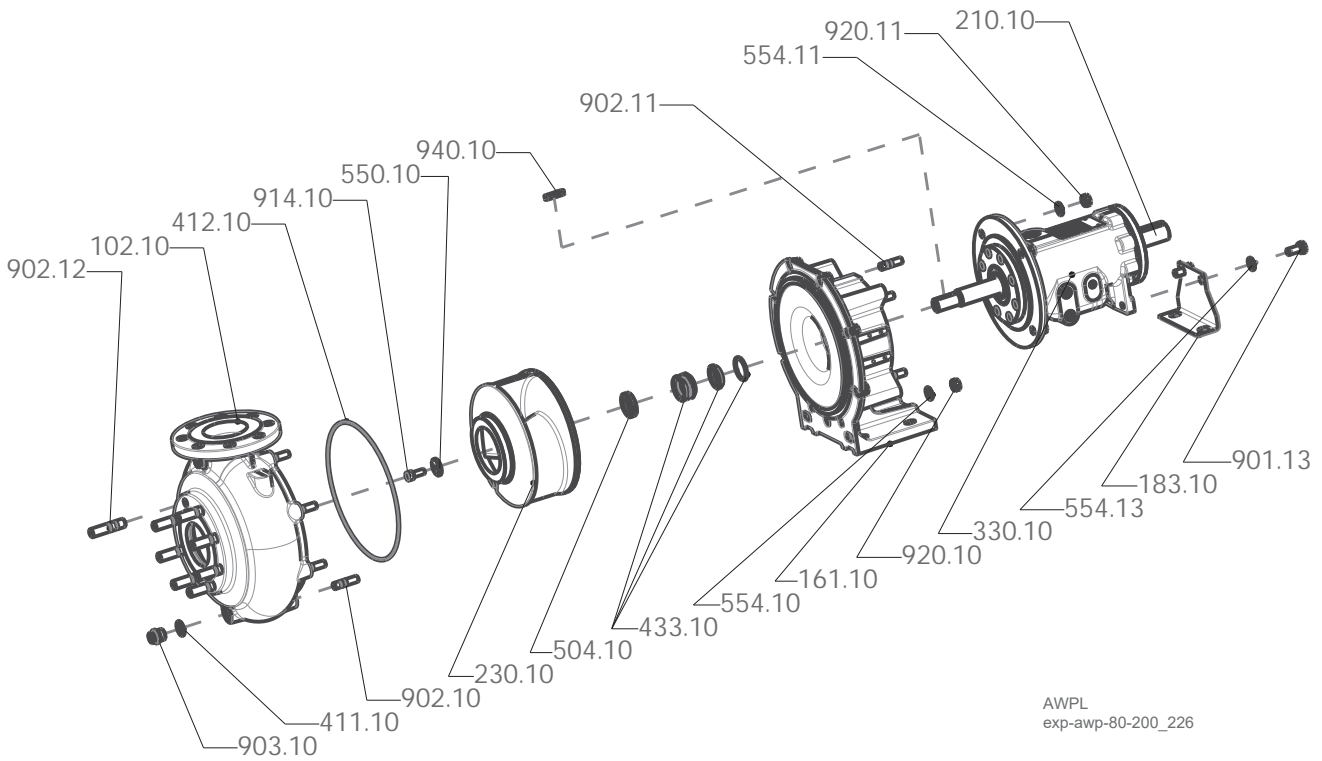


AWPT-D 50-125
exp-awp-50-125_012

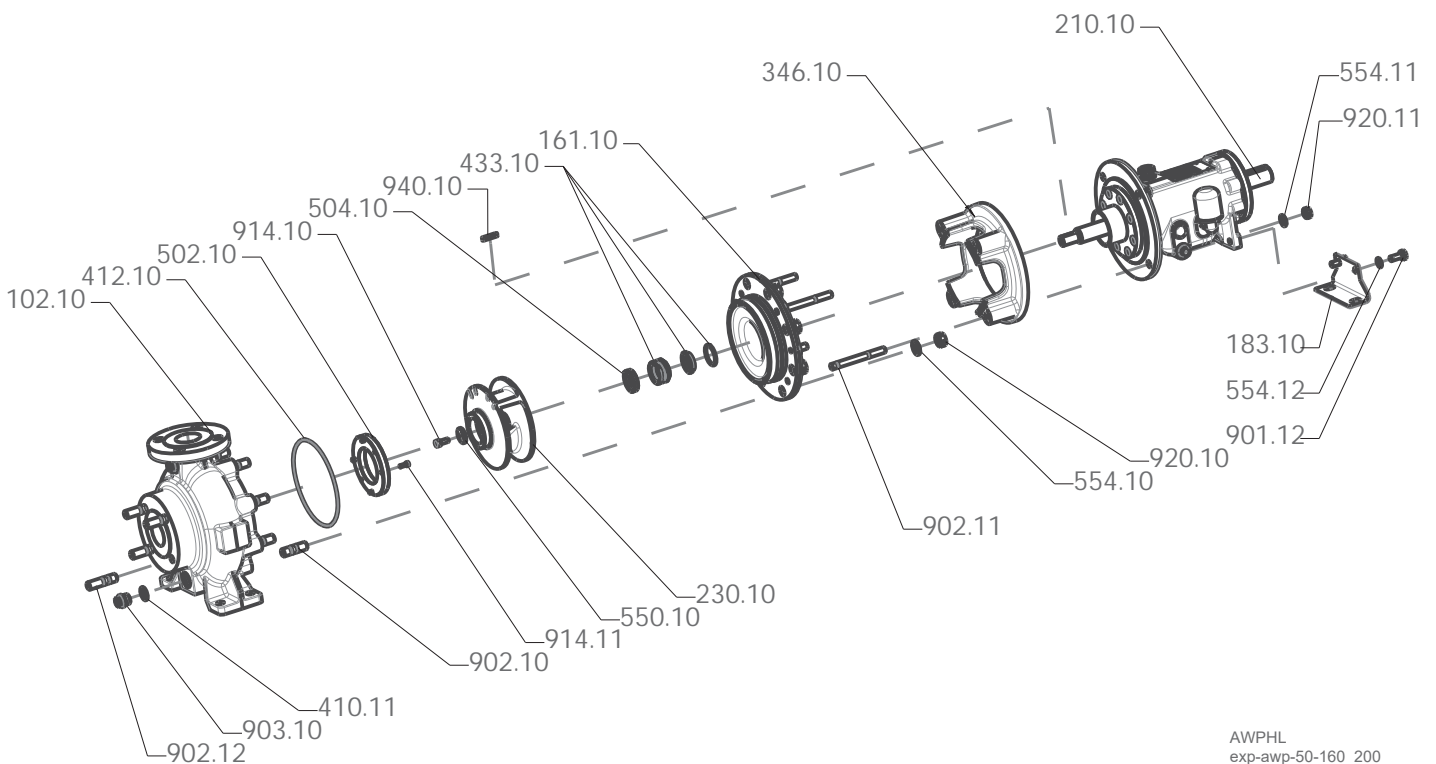
Exploded views

STROBL PUMPEN

AWPL 50-160, 50-200, 80-200, 80-315, 100-200



AWPHL 50-160, 50-200, 80-200, 150-315



Sewage water pumps
Series AWP/AWPH



Your contact



Specifications subject to change without notice

Edition 03/2026