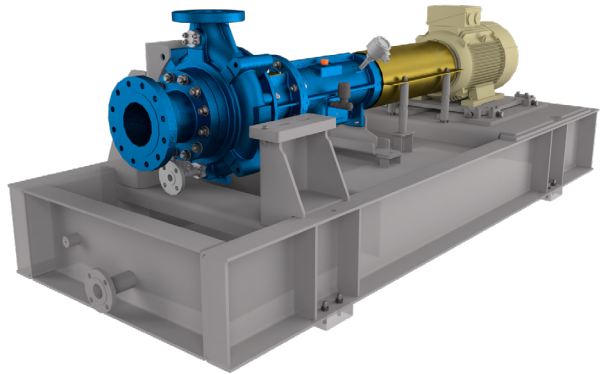


**STROBL
PUMPEN**

Process pumps

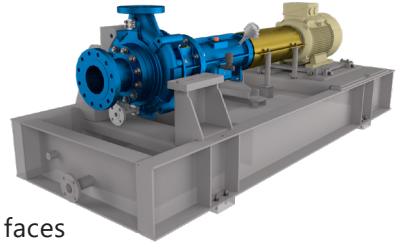


General Description

Our process pumps CPP have their feet centralised to the axis and therefore an advantage in absorbance of big nozzle forces and temperature stress. Material, seals and bearings are adjusted to your request.

Characteristics

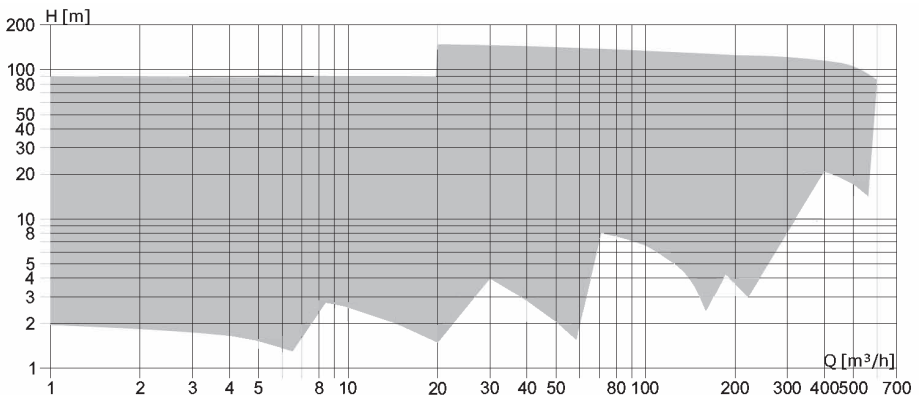
- ⊙ Changeable wear rings on impeller in casing
- ⊙ Execution to API 610 possible
- ⊙ Suction piece with carved optimised flow root faces
- ⊙ Oil, grease or permanently lubricated bearing applicable



Operation data

Flow:	Q to 550 m ³ /h
Head:	H to 150m
Motor power:	P from 0,75 kW to 110kW
Design pressure:	to 150 bar
Connections:	Flanges according to EN 1092-2 or ANSI B16.5

Characteristic curve



Materials

Material	German description	Cast material	German material code number	EU - Description	EU - material code number	ASTM - UNS - description
Cast iron	GG 20	X	0.6020	EN-GJL-200	JL 1030	A48 - Grade 30
	GG 25	X	0.6025	EN-GJL-250	JL 1040	A48 - Grade 35
Nodular c. i.	GGG 40	X	0.7040	EN-GJS-400-15	JS 1030	A536 - 60-40-18
Bronze	G-CuSn10	X	2.1050.01	CuSn10-C	CC480K-GS	B505 - C90700
Aluminium bronze	G-CuAl10Ni	X	2.0975.01	CuAl10 Fe5Ni5-C	CC333G-GS	B505 - C95500
Hard iron	G-X300 CrMo 15-3	X	0.9635	EN-GJN-HV600 (XCr14)	JN 3029	A532 - Class II Type B
hardened steel	42 CrMo 4		1.7225	42CrMo4	1.7225	A322 - G41400
Stainless steel - 316	G-X5CrNiMo 19-11-2	X	1.4408	GX5CrNiMo 19-11-2	1.4408	A351 - CF8M - J92900
Duplex	G-X2 CrNi-MoN 22-5-3	X	1.4470	GX2 CrNiMoN 22-5-3	1.4470	A995-4A -J92905
	G-X2 CrNi-MoCuN 25-6-3-3	X	1.4517	GX2 CrNiMo-CuN 25-6-3-3	1.4517	A995-4A -J93372
	X2 CrNiMoN 22-5-3		1.4462	X2 CrNiMoN 22-5-3	1.4462	A276 -S31803
Super duplex	G-X2 CrNi-MoN 26-7-4	X	1.4469	GX2 CrNiMoN 26-7-4	1.4469	A995-5A - J93404
	X2CrNi-MoCuWN 25-7-4		1.4501	X2CrNiMo-CuWN 25-7-4	1.4501	A276 - S32760
High alloy SS	G-X2CrNi-MoCu N 20-18-6	X	1.4557	GX2CrNiMo-CuN 20-18-6	1.4557	A744 - 6MO - J93254
	X1CrNiMo-CuN 20-18-7		1.4547	X1CrNiMoCuN 20-18-7	1.4547	A276 - 6MO - S31254

Other variants are available on request.



STROBL PUMPEN GMBH & CO. KG
BOSCHRING 3 - 91161 HILPOLTSTEIN

TEL.: +49-9174-97708-0
FAX.: +49-9174-97708-10

INFO@STROBL-PUMPEN.DE
WWW.STROBL-PUMPEN.DE

